

The background features a large, light blue watermark of the ITU logo, which consists of a globe with a satellite dish and the letters 'ITU' in the center.

# **DLT Security Standardization**

## **Collaboration with other SDOs**

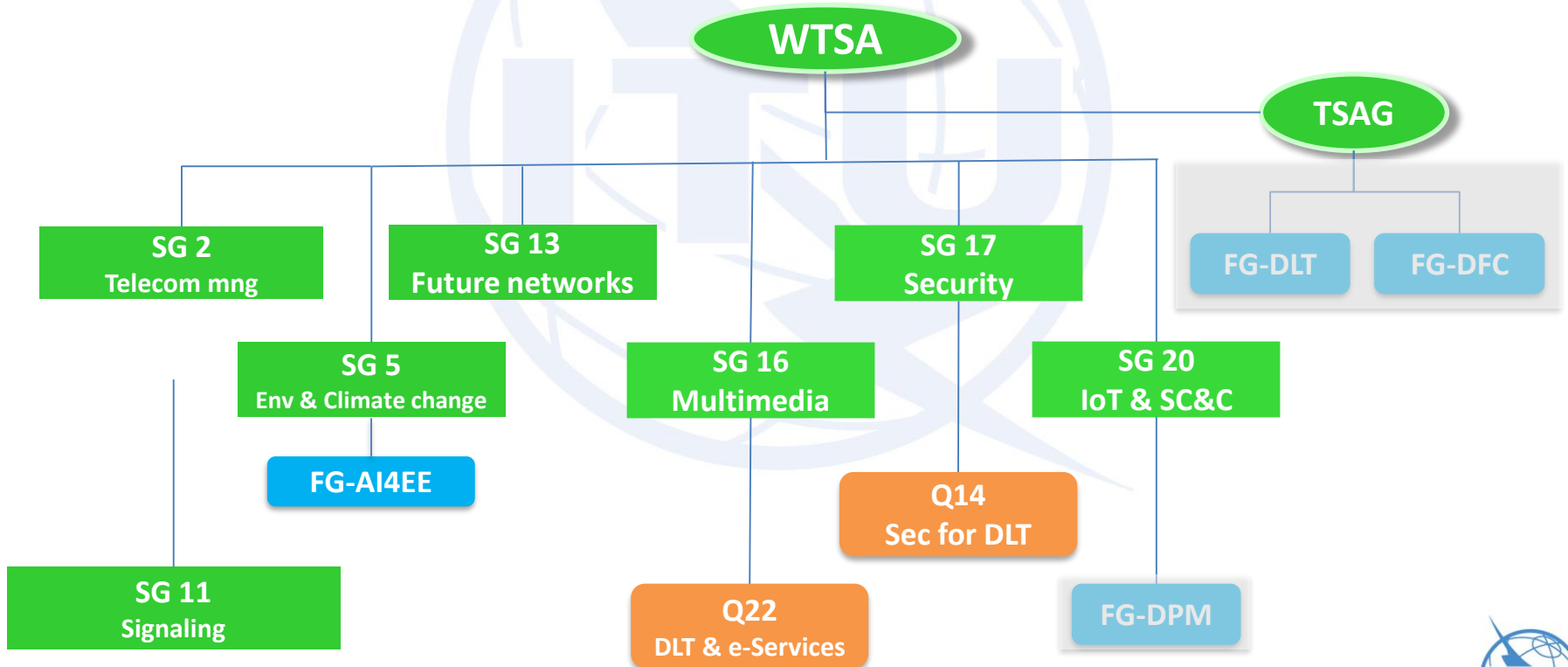
*Kyeong Hee Oh, Corapporteur of Q14/17*

# Q14/17 Security aspects for DLT

- Started in Sept 2017, approved in March 2018
- Involved in the establishment of the FG-DLT and FG-DFC
- X.1400, Terms and definitions for DLT
- X.1401, Security threats of DLT
- X.1402, Security framework for DLT
- X.1403, Security guidelines for using DLT for Decentral identity management
- X.1404, Security assurance for DLT

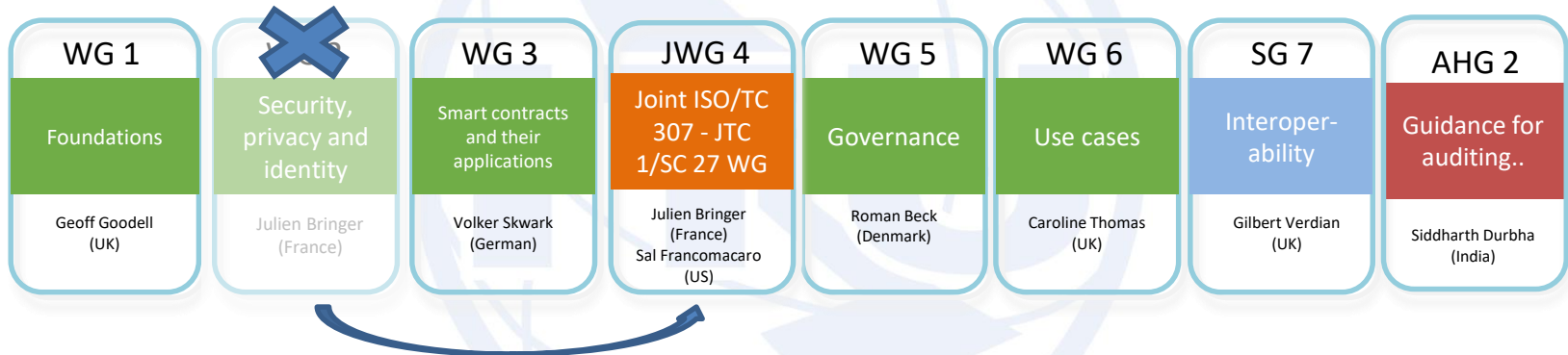
# Q14/17 Collaborations

- Liaison in ITU-T



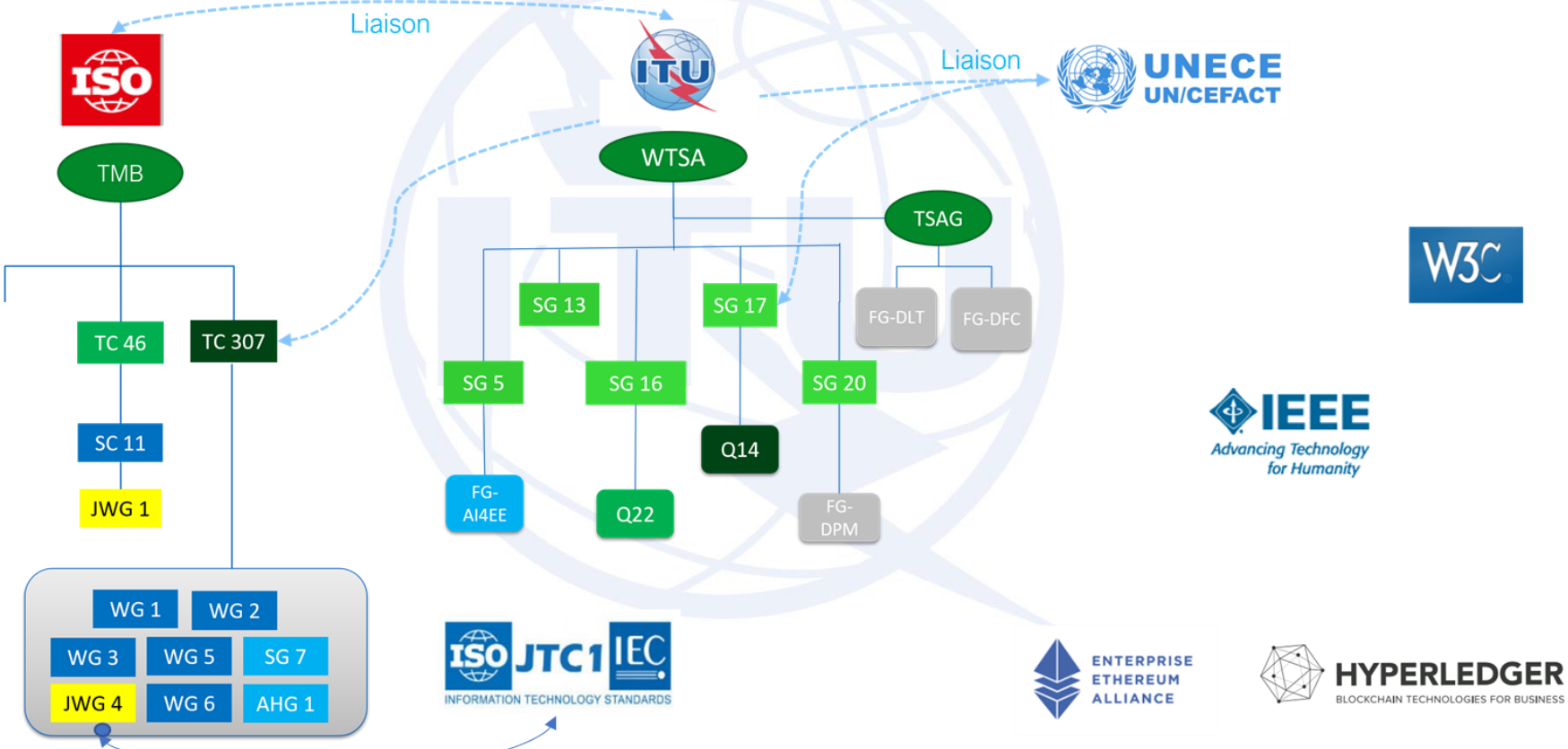
# Q14/17 Collaborations

- Liaison with ISO TC 307



- Q14/17 was preparing the joint workshop with WG2 and JWG 4 before this pandemic

# Collaborations between SDOs



# Effect of Std dev

- X.str-dlt, security threats and risks for digital payment systems based on DLT
  - FG-DFS
  - FIGI
- X.srcsm-dlt, security requirements for smart contract management based on DLT
- X.sc-dlt, security controls for DLT

# Success factors and risks

- Acceptance in the market
  - Effective use cases
  - DLT is evolving technology
  - Institutional technology
- ➔ Doing the right thing and doing it right!