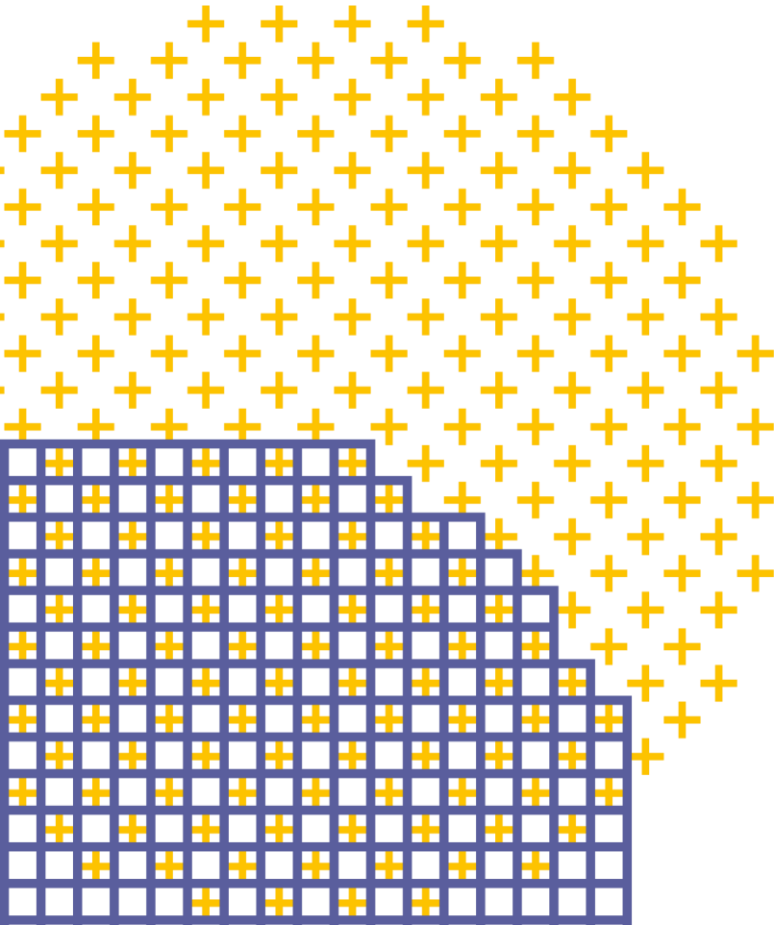




# NATIONAL DIGITAL TWIN PROGRAMME

---

The information infrastructure that will  
unleash the information economy



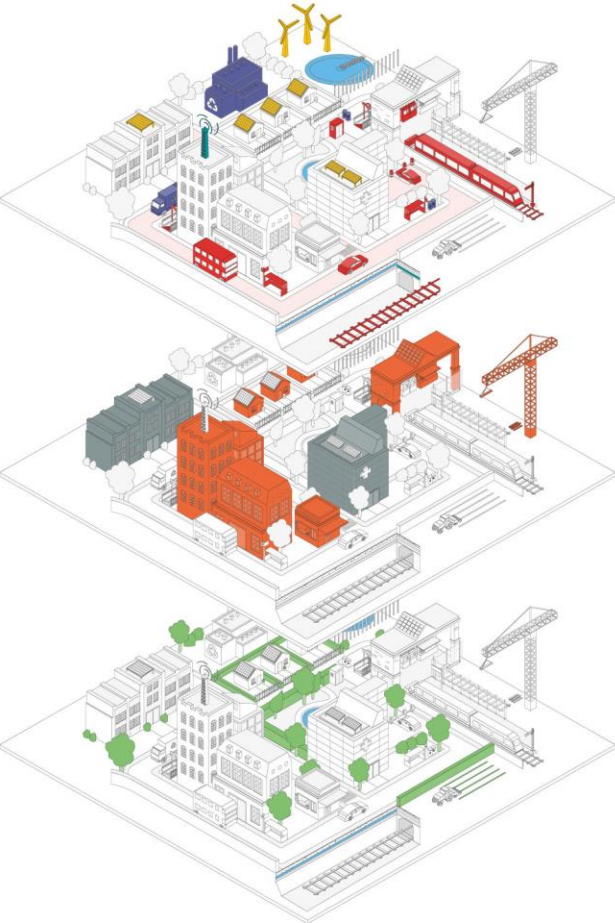
# Data for the public good

## Recommendations

1. **A National Digital Twin** – an ecosystem of connected digital twins to enable better outcomes from our built environment
2. **An Information Management Framework** – to enable secure resilient data sharing and effective information management



# System of systems = cities/places



**Economic Infrastructure**

**Social Infrastructure**

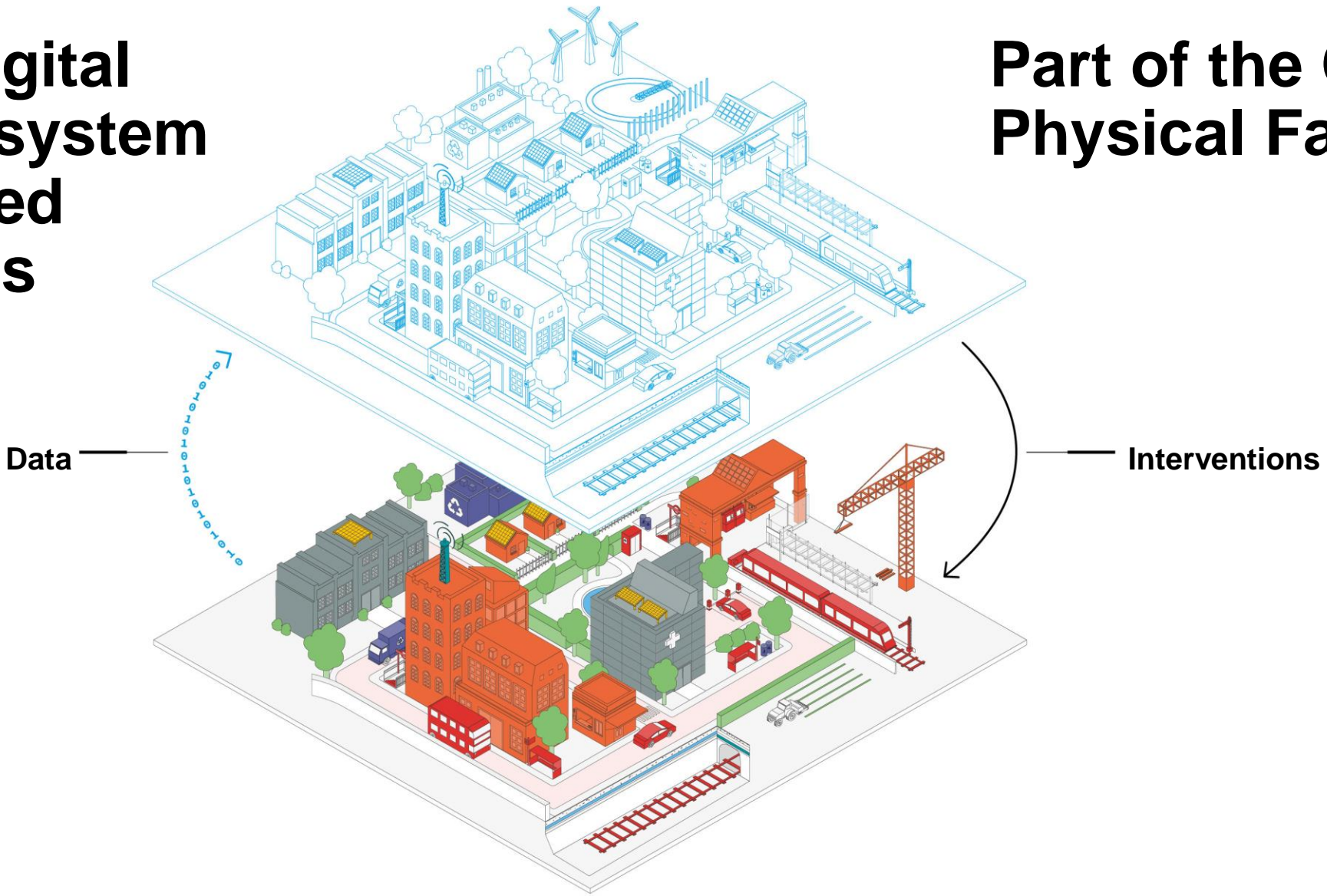
**Natural Infrastructure**



**Built Environment**

# National Digital Twin = ecosystem of connected digital twins

# Part of the Cyber-Physical Fabric



# Flourishing systems

A vision for infrastructure that is:

**People-focused** – recognising the fundamental role of infrastructure and technology in the social, economic and environmental outcomes that determine the quality of people's lives.

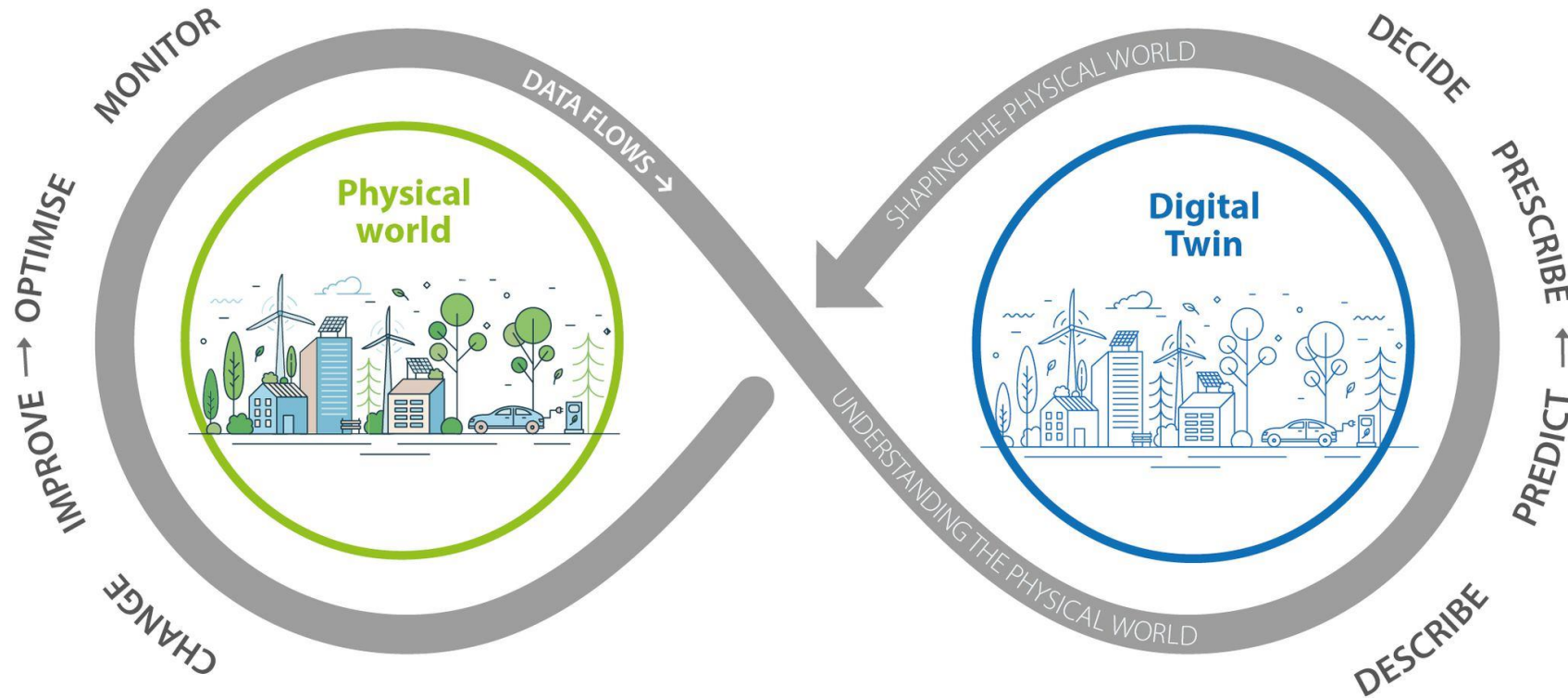
**Systems-based** – recognising infrastructure as a complex, interconnected system of systems that must deliver continuous service to society.



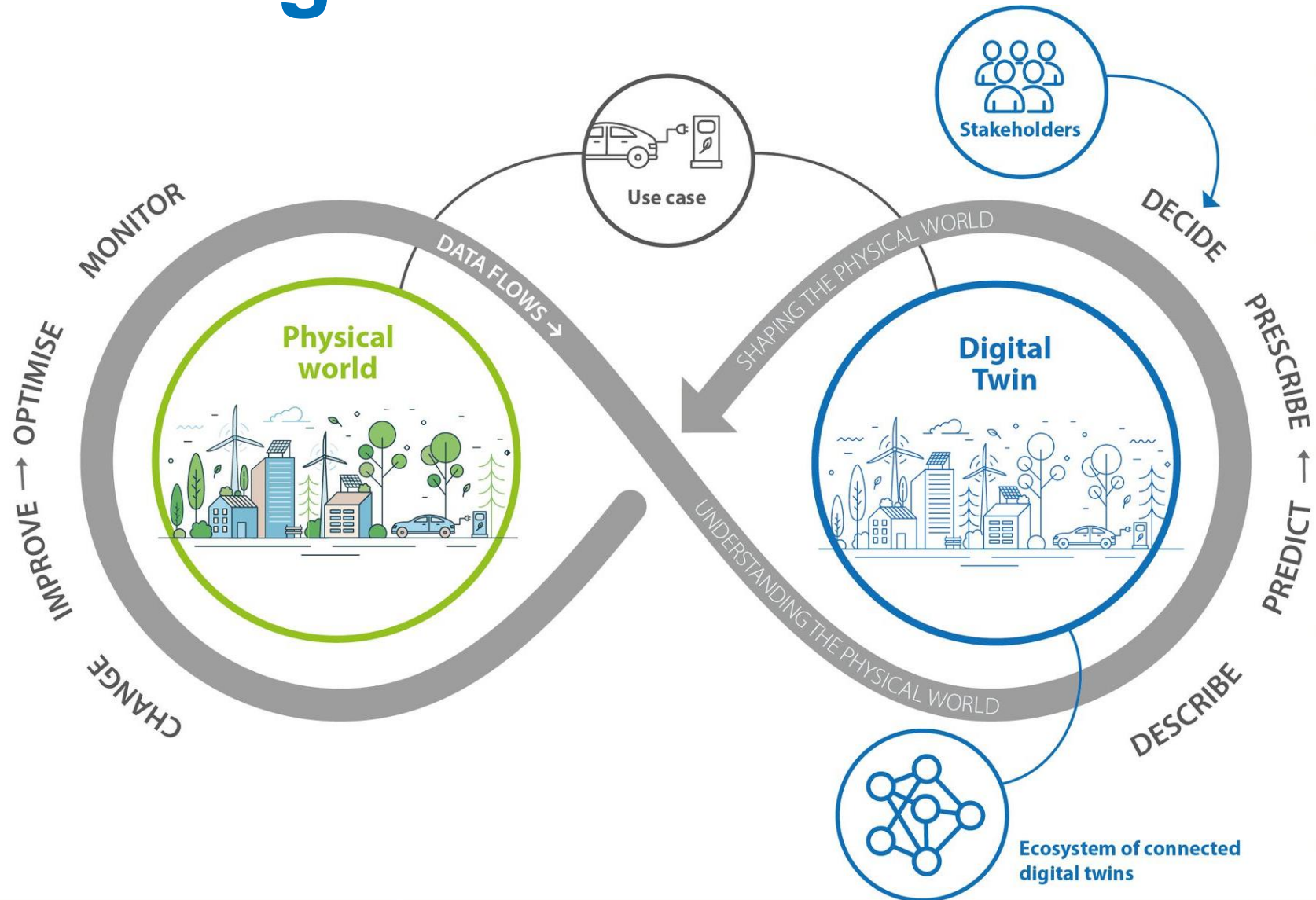
# What is a digital twin?

[www.digitaltwinhub.co.uk](http://www.digitaltwinhub.co.uk)

DT Toolkit

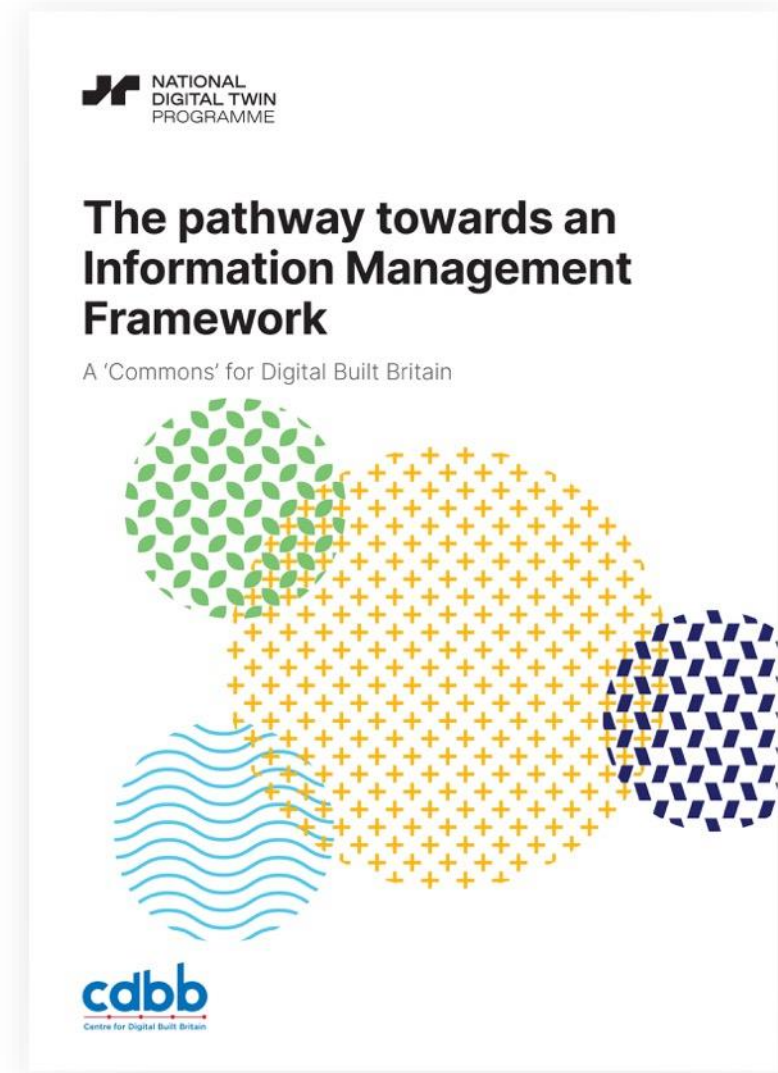


# What is a digital twin?



# The pathway towards an Information Management Framework

1. **Foundation Data Model** – a consistent, clear understanding of what constitutes the world of digital twins
2. **Reference Data Library** – the particular set of classes and the properties we will want to use to describe our digital twins
3. **Integration Architecture** – the protocols that will enable the managed sharing of data





# Guided by the Gemini Principles

**Purpose:**  
Must have clear purpose

**Public good**  
Must be used to deliver genuine public benefit in perpetuity

**Value creation**  
Must enable value creation and performance improvement

**Insight**  
Must provide determinable insight into the built environment

**Trust:**  
Must be trustworthy

**Security**  
Must enable security and be secure itself

**Openness**  
Must be as open as possible

**Quality**  
Must be built on data of an appropriate quality

**Function:**  
Must function effectively

**Federation**  
Must be based on a standard connected environment

**Curation**  
Must have clear ownership, governance and regulation

**Evolution**  
Must be able to adapt as technology and society evolve

## The Gemini Principles

Digital twins of physical assets are helping organisations to make better-informed decisions, leading to improved outcomes.

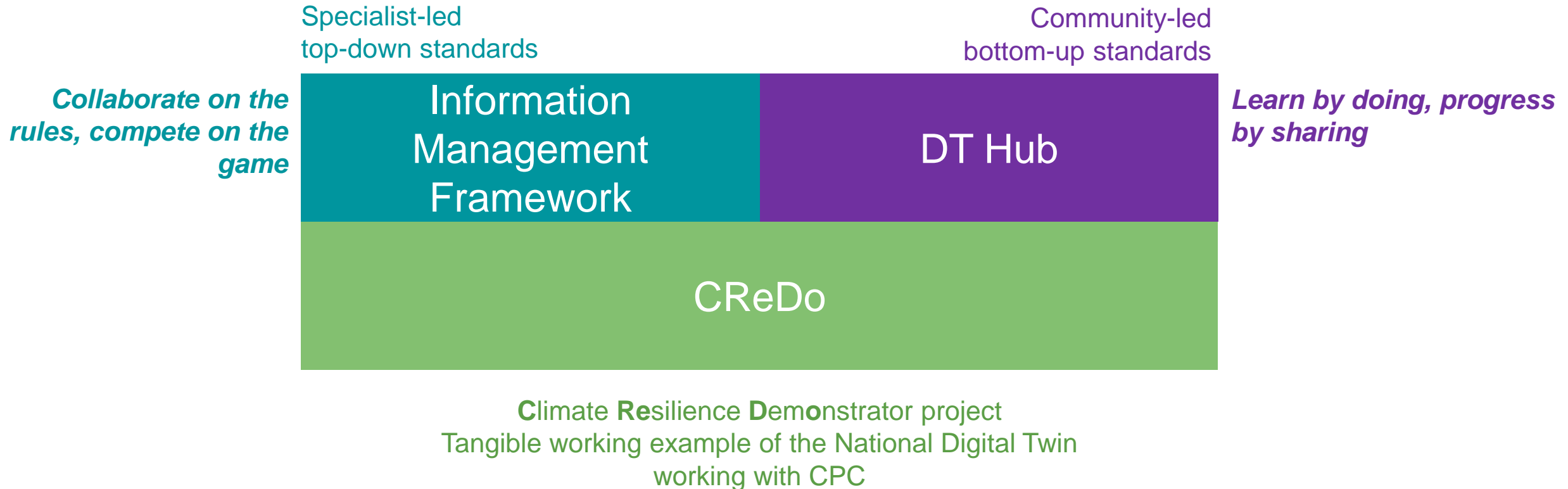
Creating an ecosystem of connected digital twins – a national digital twin – opens the opportunity to release even greater value, using data for the public good.

This paper sets out proposed principles to guide the national digital twin and the information management framework that will enable it.

# DT purpose: The use case framework



# Context – National Digital Twin key projects for FY21/22



---

# CReDo purpose

## 1. Climate change

- Climate change is a systemic challenge that demands systems-based solutions. Cross-sector data sharing is an essential enabler of net-zero and climate resilience.
- To demonstrate meaningful secure, resilient information sharing across organisational and sectoral boundaries in the 'domain' of Climate Resilience for the water, energy and telecoms sectors.
- DT's as an essential enabler of net zero

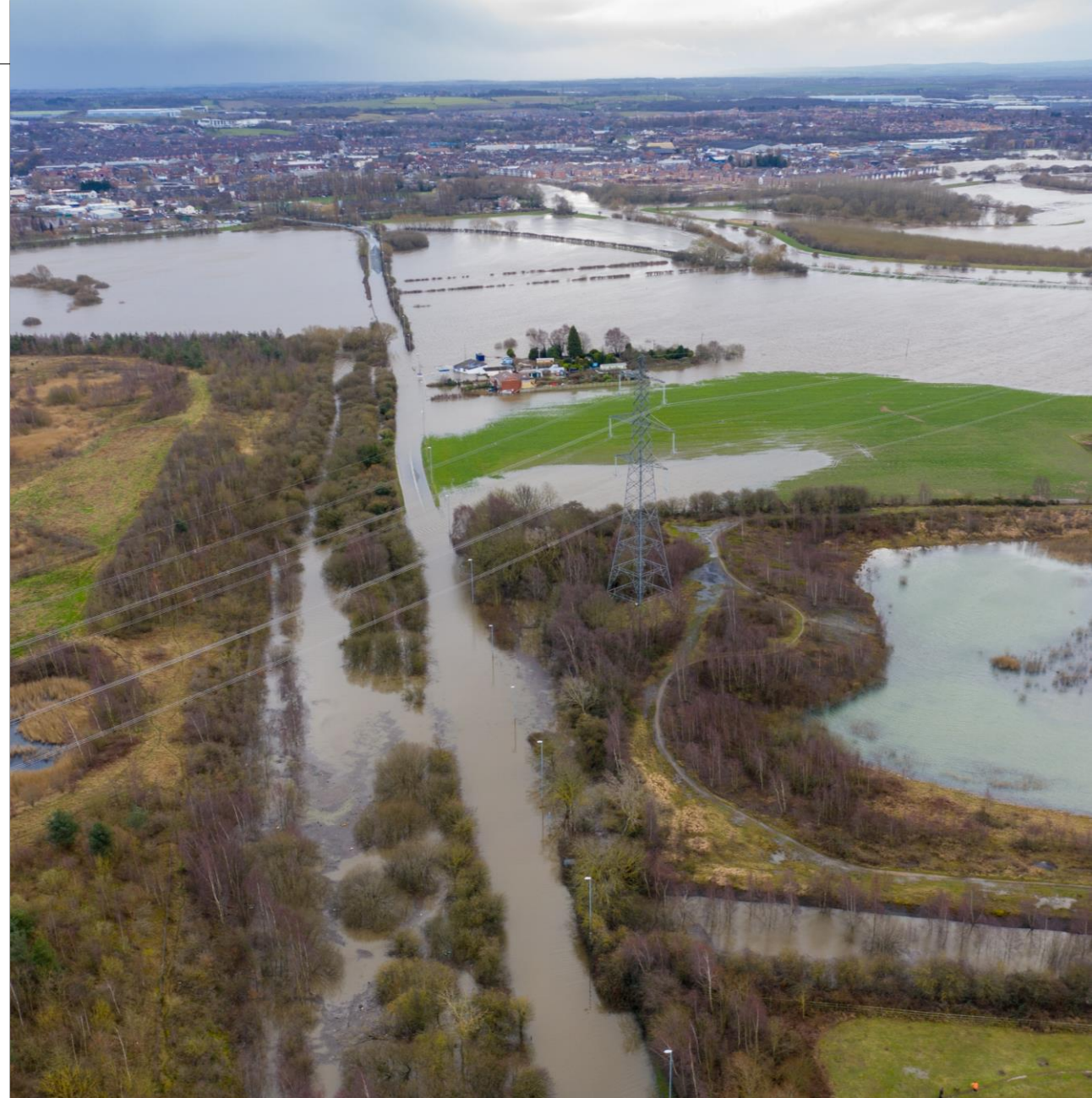
## 2. Information Management Framework (IMF)

- To develop a tangible working example of the National Digital Twin - a 'thin slice' of the envisaged ecosystem of connected digital twins.
- Apply Information Management Framework approach to achieve cross-sector interoperability.



# CReDo: Climate Resilience Demonstrator project

- Climate change adaptation digital twin
- The initial use case will be impact of flooding on the networks and the system interdependencies.
- CreDo will connect data across water, energy and telecoms assets in a selected region in UK
- CReDo will inform decisions in operations and capital planning, and real-time response to extreme weather events caused by climate change.
- Successful outcome is scalable and replicable (using IMF approach)





# NATIONAL DIGITAL TWIN PROGRAMME

---

Build better connections:  
[digitaltwinhub.co.uk](https://digitaltwinhub.co.uk)

