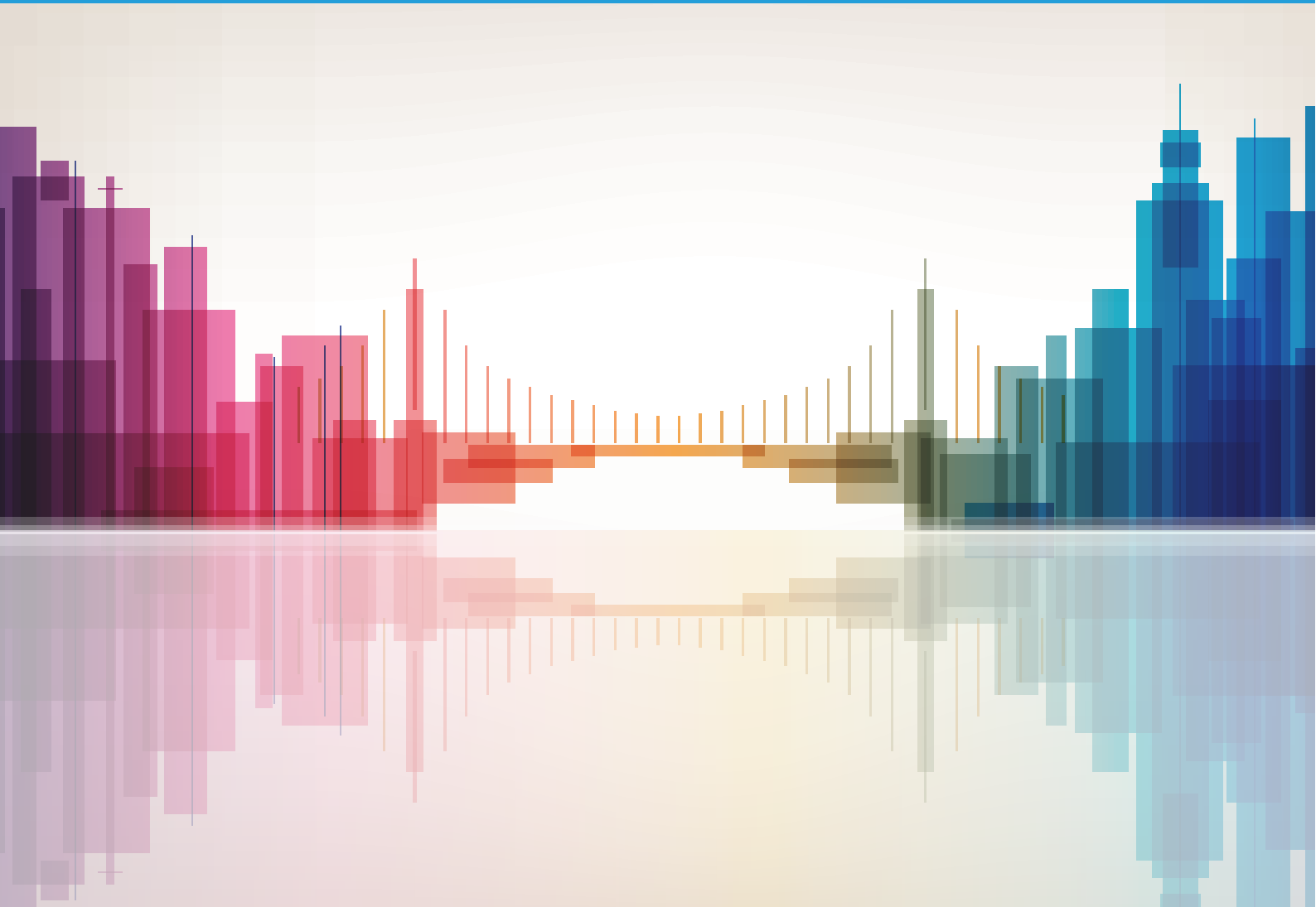


Snapshot Møre og Romsdal, Norway

November 2021



Foreword

This publication has been developed by ITU within the framework of the United for Smart Sustainable Cities (U4SSC) initiative.

It provides a visual overview of the performance at the individual city and county level for Møre og Romsdal County, Norway, to the benchmarks developed for the U4SSC Key Performance Indicators for Smart Sustainable Cities.

Disclaimer

The views expressed in this publication are those of the author and do not necessarily reflect the views of the contributing organizations.

Any references made to specific countries, companies, products, initiatives, policies, framework or guidelines do not in any way imply that they are endorsed or recommended by ITU, the author, or any other organization that the author is affiliated with, in preference to others of similar nature that are not mentioned.

This publication is intended for informational purposes only.

© ITU - All rights reserved. Requests to reproduce extracts of this publication may be submitted to jur@itu.int.

Introduction

Norway is generally divided into five regions, which largely represent areas with a common language and culture: Northern Norway, Trøndelag, Western Norway, Southern Norway and Eastern Norway. Western Norway is a region which consists of three counties: Møre og Romsdal, Vestland and Rogaland.

The U4SSC KPIs, which are based on [Recommendation ITU-T Y.4903](#), have been implemented in the cities of Møre og Romsdal County, Norway.

This benchmark was developed by combining and analyzing the data from 26* municipalities in Møre og Romsdal. These are: Ålesund, Kristiansund, Molde, Aukra, Aure, Averøy, Fjord, Giske, Gjemnes, Hareid, Herøy, Hustadvika, Ørsta, Rauma, Sande, Smøla, Stranda, Sula, Sunndal, Surnadal, Sykkylven, Tingvoll, Ulsten, Vanylven, Vestes, Volda.

These visual representations highlight the county's performance in each dimension and subdimension of the KPIs for SSC based on the inherited benchmark value of each indicator.

This set of KPIs for SSC was developed to establish the criteria to evaluate ICTs' contributions in making cities smarter and more sustainable, and to provide cities with the means for self-assessments.

* Sula and Giske municipalities are included in the data for Ålesund.



LIV UNDER VANN

LIV UNDER VANN

9

INDRELANDS OG INDUSTRI

11

BÆREKRAFTIGE BYER OG SAMFUNN

1

UTRYDDING AV FATTIGDOM

County Profile

Inhabitants 265 544	Area 13 839 km²	Inflation Rate 2.2 %	Households 118 608	Household Income NOK 696 000
-------------------------------	--------------------------------------	--------------------------------	------------------------------	--

Performance to Benchmarks – Key Performance Indicators Dimensions, Categories & KPIs

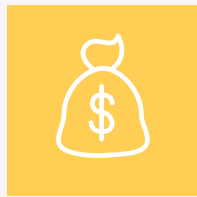
This benchmark was developed by combining all the data from 26 municipalities in Møre og Romsdal.



Performance Benchmark Targets apply to all sections of the graphic.

Performance to Benchmarks – Key Performance Indicators

Sub Dimensions



Economy



ICT

(ICT Infrastructure, Water and Sanitation, Drainage, Electricity Supply, Transport, Public Sector)



Productivity

(Innovation, Employment)



Infrastructure

(Water and Sanitation, Electricity Supply, Transport, Waste, Buildings, Urban Planning)



Environment



Environment

(Air Quality, Water and Sanitation, Waste, Environmental Quality, Public Space and Nature, Energy)



Energy

(Energy)



Society and Culture



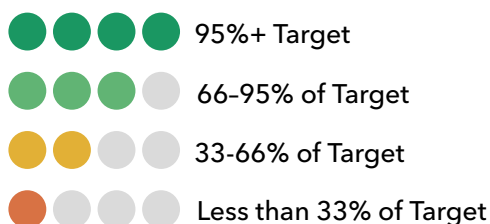
Education, Health and Culture

(Education, Health, Culture)



Safety, Housing and Social Inclusion

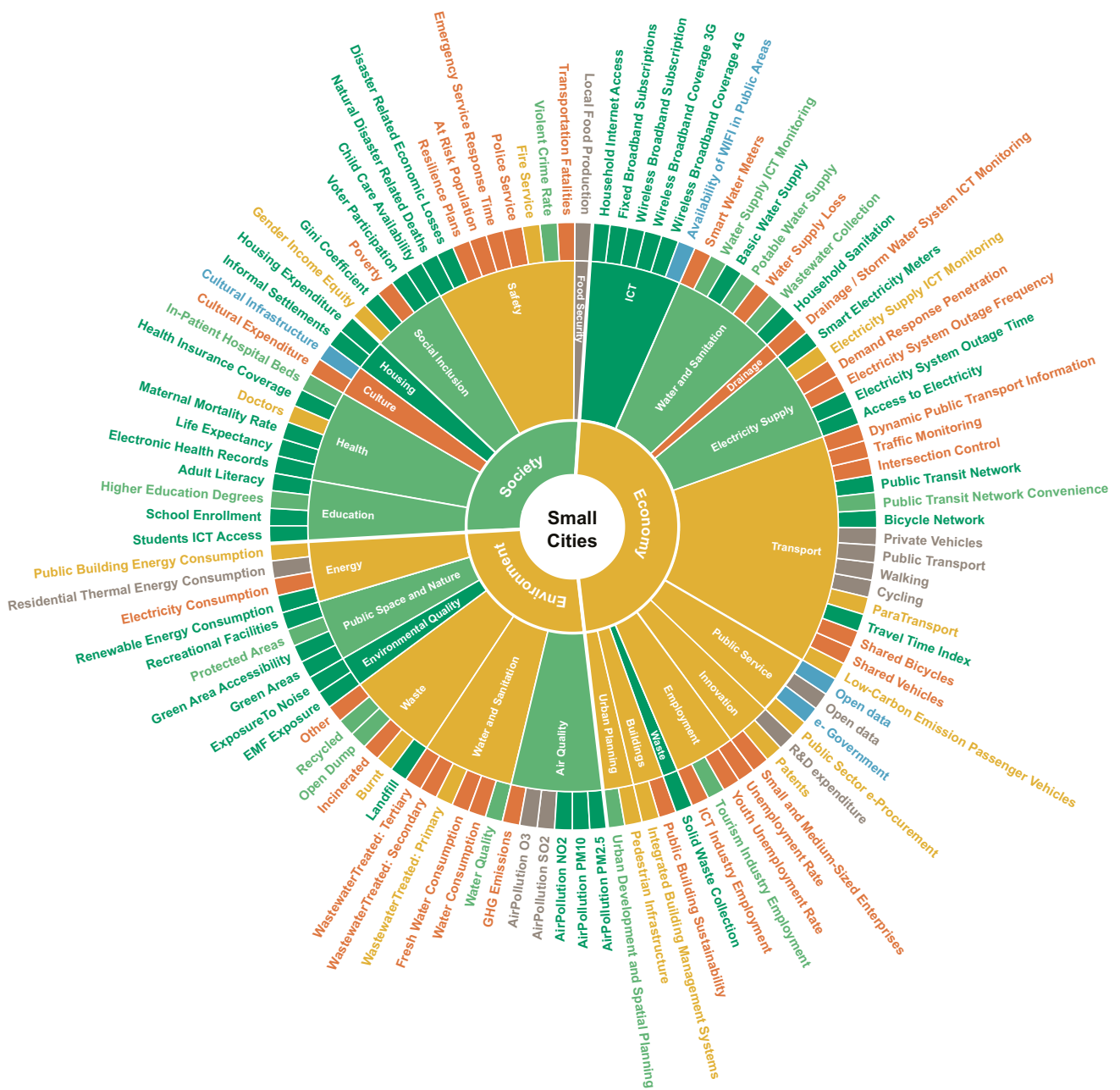
(Housing, Social Inclusion, Safety, Food Security)



Performance to Benchmarks – Key Performance Indicators

Dimensions, Categories & KPIs

This Benchmark was developed by combining the data collected from the 21 smaller municipalities in Møre og Romsdal: Aukra, Aure, Averøy, Fjord, Gjemnes, Hareid, Herøy, Hustadvika, Ørsta, Rauma, Sande, Smøla, Stranda, Sunndal, Surnadal, Sykkylven, Tingvoll, Ulsten, Vanylven, Vestes, Volda.



- 95%+ Target
- 66-95% of Target
- 33-66% of Target
- Less than 33% of Target
- No Data or No Target
- Data Reported, No Targets Yet Available

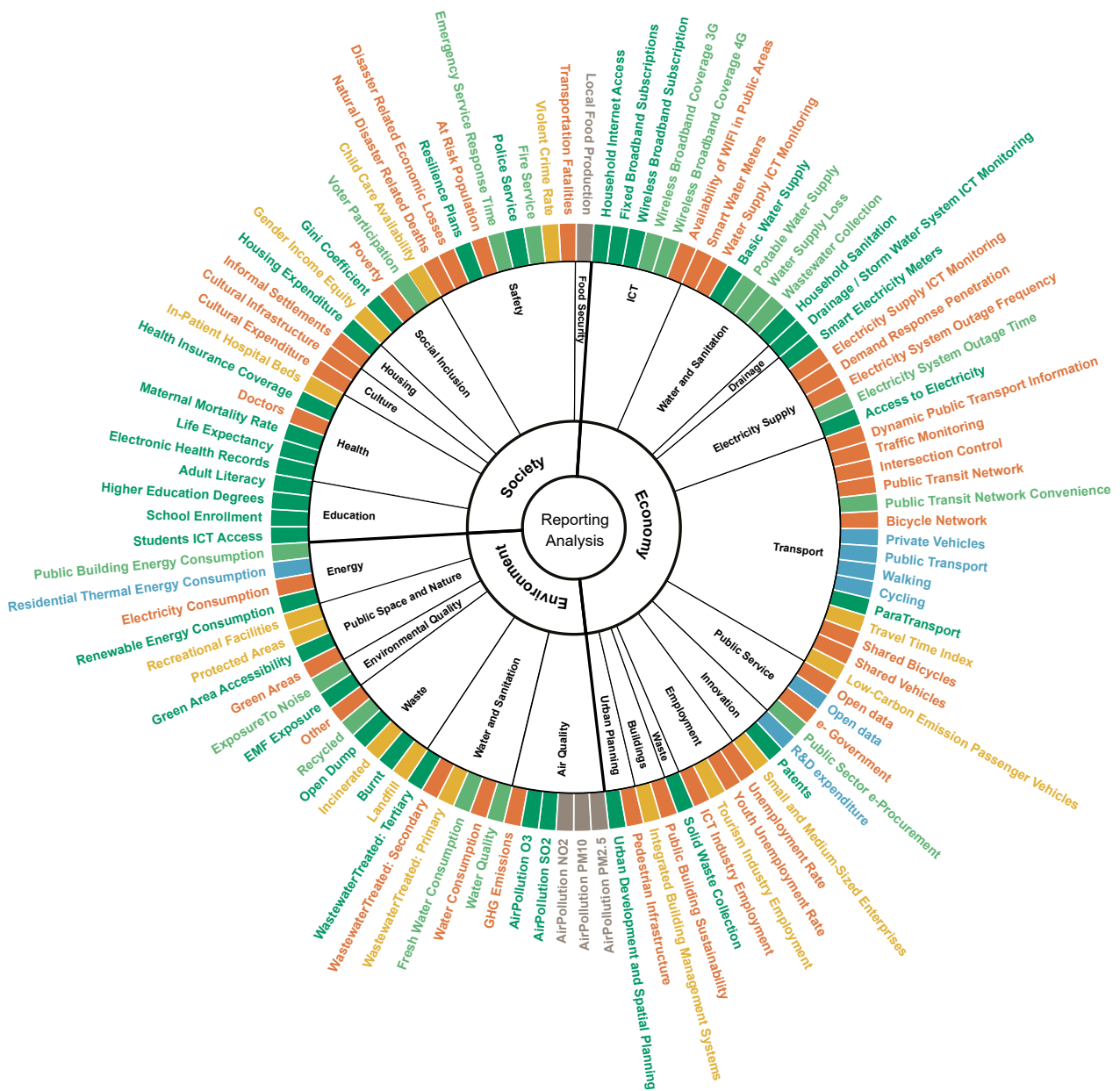
Performance Benchmark Targets apply to all sections of the graphic.

Data Reporting Variations – Key Performance Indicators

The consolidated data reported from the larger municipalities was compared to the consolidated data reported from the smaller municipalities.

The visual below shows the differences in the KPI values reported by the smaller municipalities versus the KPI values reported larger municipalities.

The analysis was completed on the KPIs only and not on Dimensions or Categories.



- +/- 10% difference
- +/- 10 to 25% difference
- +/- 25 - 50% difference
- +50% difference
- Not reported by larger communities
- Not reported by smaller communities

Performance Benchmark Targets apply to all sections of the graphic.

Performance to Benchmarks – Key Performance Indicators

All Municipalities - Table Format

The following pages illustrates the individual key performance indicator benchmarks for each municipality and the county.

The county benchmark is based on the overall population and area of the county rather than an average of individual municipality benchmarks.

The information is presented in the 3 dimensions of the U4SSC KPIs:

- Economy
- Environment
- Society and Culture

Trends in the actual benchmark performance within the municipalities of the Møre og Romsdal may be more easily seen in this alternative format.

Text and numbers have been added to correspond to each benchmark level for greater clarity.

4	95%+ Target
3	66-95% of Target
2	33-66% of Target
1	Less than 33% of Target
NR	Not Reported
NA	No Target Yet Available

Dimension – Economy

KPI	Møre og Romsdal	Alstund	Kristiansund	Molde	Aulnra	Aure	Averøy	Fjord	Harsid	Høyri	Hustadvika	Gjymes
EC: ICT: ICT: 1C Household Internet Access	4	4	4	4	4	4	4	4	4	4	4	4
EC: ICT: ICT: 2C Fixed Broadband Subscriptions	4	4	4	4	4	4	4	4	4	4	4	4
EC: ICT: ICT: 3C Wireless Broadband Subscriptions	4	4	4	4	4	4	4	4	4	4	4	4
EC: ICT: ICT: 4C Wireless Broadband Coverage - 3G	3	3	4	3	4	4	4	4	4	4	4	4
EC: ICT: ICT: 4C Wireless Broadband Coverage - 4G	3	3	4	3	4	4	4	4	4	4	4	4
EC: ICT: ICT: 5A Availability of WiFi in Public Areas	NA	NA	NA	NA	NA	NA	NA	NA	NA	NA	NA	NA
EC: ICT: WS: 1C Smart Water Meters	1	1	1	1	1	NR	2	1	1	NR	2	NR
EC: ICT: WS: 2A Water Supply ICT Monitoring	2	1	1	3	3	3	1	2	1	NR	4	NR
EC: I: WS: 1C Basic Water Supply	4	4	4	4	4	4	4	4	4	4	4	3
EC: I: WS: 2C Potable Water Supply	3	3	4	4	3	2	3	4	3	3	1	1
EC: I: WS: 3C Water Supply Loss	1	1	1	1	2	2	1	1	1	NR	1	1
EC: I: WS: 4C Wastewater Collection	3	3	4	4	3	3	2	3	3	4	3	4
EC: I: WS: 6C Household Sanitation	4	4	4	4	4	NR	4	4	4	4	4	4
EC: ICT: D: 1A Drainage / Storm Water System ICT Monitoring	1	1	1	1	1	NR	1	1	1	NR	1	NR
EC: ICT: ES: 1C Smart Electricity Meters	4	4	4	4	4	4	4	4	4	4	4	4
EC: ICT: ES: 2A Electricity Supply ICT Monitoring	2	3	4	4	4	NR	NR	NR	NR	NR	NR	2
EC: ICT: ES: 3A Demand Response Penetration	1	1	1	1	1	NR	NR	NR	NR	NR	NR	NR
EC: I: ES: 1C Electricity System Outage Frequency	1	3	4	2	3	1	1	1	1	1	1	1
EC: I: ES: 2C Electricity System Outage Time	4	4	4	4	4	4	4	4	4	4	4	4
EC: I: ES: 3C Access to Electricity	4	4	4	4	4	4	3	4	4	4	4	4
EC: ICT: T: 1C Dynamic Public Transport Information	2	4	4	4	4	4	1	1	1	1	1	4
EC: ICT: T: 2C Traffic Monitoring	1	1	1	1	1	1	1	1	1	1	1	1
EC: ICT: T: 3A Intersection Control	2	4	4	4	1	1	1	1	1	1	1	1
EC: I: T: 1C Public Transport Network	4	4	4	4	4	4	4	4	4	4	4	4
EC: I: T: 2A Public Transport Network Convenience	3	3	4	3	3	1	3	3	3	3	3	2
EC: I: T: 3C Bicycle Network	4	4	4	4	4	4	4	4	4	1	4	4
EC: I: T: 4A Transportation Mode Share - Private Vehicles	1	1	1	1	NR	NR	NR	NR	NR	NR	NR	NR
EC: I: T: 4A Transportation Mode Share - Public Transport	1	1	1	1	NR	NR	NR	NR	NR	NR	NR	NR
EC: I: T: 4A Transportation Mode Share - Walking	4	4	4	4	NR	NR	NR	NR	NR	NR	NR	NR
EC: I: T: 4A Transportation Mode Share - Cycling	1	1	1	2	NR	NR	NR	NR	NR	NR	NR	NR
EC: I: T: 4A Transportation Mode Share - Para Transport	NR	NR	NR	NR	2	2	2	2	4	2	2	3
EC: I: T: 5A Travel Time Index	4	4	3	3	4	4	4	4	4	4	4	4
EC: I: T: 6A Shared Bicycles	1	1	1	1	3	1	1	1	1	1	1	1
EC: I: T: 7A Shared Vehicles	1	1	1	2	1	1	1	1	1	1	1	1
EC: I: T: 8A Low-Carbon Emission Passenger Vehicles	2	2	2	2	3	1	4	2	2	2	2	2
EC: ICT: PS: 1A Open Data	NA	NA	NA	NA	NA	NA	NA	NA	NA	NA	NA	NA
EC: ICT: PS: 1A Open Data	NR	4	3	3	4	NR	1	1	4	NR	1	NR
EC: ICT: PS: 2A e- Government	NA	NA	NA	NA	NA	NA	NR	NA	NA	NA	NA	NR
EC: ICT: PS: 3A Public Sector e-procurement	3	3	3	2	4	3	NR	3	NR	4	1	NR
EC: P: IN: 1C R&D expenditure	NR	2	2	2	NR	NR	NR	NR	NR	NR	NR	NR
EC: P: IN: 2C Patents	2	3	1	1	1	1	3	1	4	2	1	1
EC: P: IN: 3A Small and Medium-Sized Enterprises	1	4	4	4	1	4	3	1	4	1	4	1
EC: P: EM: 1C Unemployment Rate	2	4	4	4	1	3	2	1	1	1	1	2
EC: P: EM: 2C Youth Unemployment Rate	3	4	4	4	1	1	4	4	3	1	1	4
EC: P: EM: 3A Tourism Sector Employment	4	4	4	3	4	3	3	4	1	4	3	4
EC: P: EM: 4A ICT Sector Employment	1	1	1	1	1	1	1	1	1	1	1	1
EC: I: WA: 1C Solid Waste Collection	4	4	4	4	4	4	4	4	3	4	4	4
EC: I: B: 1A Public Building Sustainability	1	1	1	1	1	1	1	1	1	1	1	NR
EC: I: B: 2A Integrated Building Management Systems in Public Buildings	3	4	3	3	4	3	1	2	1	2	4	NR
EC: I: UP: 1A Pedestrian Infrastructure	1	1	1	1	2	2	1	1	2	1	4	1
EC: I: UP: 2A Urban Development and Spatial Planning - Compact	3	4	4	4	3	4	4	3	3	2	3	4

● 95%+ Target
 ● 66-95% of Target
 ● 33-66% of Target
● Less than 33% of Target
 ● No Data or No Target
 ● Data Reported, No Targets Yet Available

Performance Benchmark Targets apply to all sections of the graphic.

Dimension – Economy

KPI	Orsta	Rauma	Sande	Smøla	Stranda	Sunnedal	Surnadal	Sykkelveien	Tingvoll	Ulstein	Vangøyen	Vestnes	Volda
EC: ICT: ICT: 1C	Household Internet Access	4	4	4	4	4	4	4	4	4	4	3	4
EC: ICT: ICT: 2C	Fixed Broadband Subscriptions	4	4	4	4	4	4	4	4	4	4	4	4
EC: ICT: ICT: 3C	Wireless Broadband Subscriptions	4	4	4	4	4	4	4	4	4	4	4	4
EC: ICT: ICT: 4C	Wireless Broadband Coverage - 3G	4	4	4	4	4	4	4	4	4	4	4	4
EC: ICT: ICT: 4C	Wireless Broadband Coverage - 4G	4	4	4	4	4	4	4	4	4	4	4	4
EC: ICT: ICT: 5A	Availability of WiFi in Public Areas	NA	NA	NA	NA	NA	NA	NA	NA	NA	NA	NA	NA
EC: ICT: WS: 1C	Smart Water Meters	1	1	2	1	1	1	2	2	1	1	4	1
EC: ICT: WS: 2A	Water Supply ICT Monitoring	4	4	4	4	4	3	4	4	4	4	4	4
EC: I: WS: 1C	Basic Water Supply	4	4	4	4	4	4	4	4	4	4	4	4
EC: I: WS: 2C	Potable Water Supply	3	2	3	3	3	4	3	3	3	2	3	4
EC: I: WS: 3C	Water Supply Loss	1	1	1	1	1	1	3	1	1	2	1	1
EC: I: WS: 4C	Wastewater Collection	3	4	4	4	3	3	4	3	3	3	4	2
EC: I: WS: 5C	Household Sanitation	4	4	4	4	4	4	4	4	4	4	4	4
EC: ICT: D: 1A	Drainage / Storm Water System ICT Monitoring	1	1	1	1	1	1	1	1	1	1	1	1
EC: ICT: ES: 1C	Smart Electricity Meters	4	4	4	4	4	4	4	4	4	NR	4	4
EC: ICT: ES: 2A	Electricity Supply ICT Monitoring	NR	4	NR	4	NR	4	4	4	NR	NR	NR	4
EC: ICT: ES: 3A	Demand Response Penetration	NR	NR	NR	1	1	4	1	NR	NR	NR	NR	4
EC: I: ES: 1C	Electricity System Outage Frequency	1	1	1	1	1	1	1	1	1	1	1	1
EC: I: ES: 2C	Electricity System Outage Time	3	4	4	4	4	2	4	4	3	4	3	4
EC: I: ES: 3C	Access to Electricity	4	4	4	4	4	4	4	4	4	NR	4	3
EC: ICT: T: 1C	Dynamic Public Transport Information	1	4	1	1	1	1	1	2	1	1	1	4
EC: ICT: T: 2C	Traffic Monitoring	1	1	1	1	1	1	1	1	1	1	NR	1
EC: ICT: T: 3A	Intersection Control	1	1	1	1	1	1	1	1	1	1	4	1
EC: I: T: 1C	Public Transport Network	4	4	4	4	4	4	4	4	4	4	4	4
EC: I: T: 2A	Public Transport Network Convenience	3	3	3	2	3	3	2	4	3	3	3	3
EC: I: T: 3C	Bicycle Network	4	4	4	4	4	4	4	4	4	4	1	4
EC: I: T: 4A	Transportation Mode Share - Private Vehicles	NR	NR	NR	NR	NR	NR	NR	NR	NR	NR	4	NR
EC: I: T: 4A	Transportation Mode Share - Public Transport	NR	NR	NR	NR	NR	NR	NR	NR	NR	NR	1	NR
EC: I: T: 4A	Transportation Mode Share - Walking	NR	NR	NR	NR	NR	NR	NR	NR	NR	NR	1	NR
EC: I: T: 4A	Transportation Mode Share - Cycling	NR	NR	NR	NR	NR	NR	NR	NR	NR	NR	1	NR
EC: I: T: 4A	Transportation Mode Share - Para Transport	2	2	2	2	3	2	2	2	2	4	2	2
EC: I: T: 5A	Travel Time Index	4	4	4	4	4	4	4	4	4	4	4	4
EC: I: T: 6A	Shared Bicycles	1	1	1	NR	1	1	1	1	1	1	1	1
EC: I: T: 7A	Shared Vehicles	1	1	1	NR	1	1	1	1	1	1	1	1
EC: I: T: 8A	Low-Carbon Emission Passenger Vehicles	2	2	2	2	2	2	2	2	2	3	1	3
EC: ICT: PS: 1A	Open Data	NA	NA	NA	NA	NA	NA	NA	NA	NA	NA	NA	NA
EC: ICT: PS: 1A	Open Data	1	1	NR	1	NR	NR	1	1	1	4	NR	1
EC: ICT: PS: 2A	e-Government	NA	NA	NA	NA	NA	NA	NA	NA	NA	NA	NA	NA
EC: ICT: PS: 3A	Public Sector e-procurement	3	3	3	3	4	3	3	3	1	3	NR	3
EC: P: IN: 1C	R&D expenditure	NR	NR	NR	NR	NR	NR	NR	NR	NR	NR	NR	NR
EC: P: IN: 2C	Patents	2	1	1	1	1	1	1	3	1	3	2	1
EC: P: IN: 3A	Small and Medium-Sized Enterprises	4	1	1	1	1	1	1	4	1	1	1	1
EC: P: EM: 1C	Unemployment Rate	1	1	1	2	4	2	4	1	1	1	3	1
EC: P: EM: 2C	Youth Unemployment Rate	4	1	4	1	4	1	1	1	1	1	2	1
EC: P: EM: 3A	Tourism Sector Employment	4	4	1	4	4	4	3	3	3	4	2	4
EC: P: EM: 4A	ICT Sector Employment	1	1	1	1	1	1	1	1	1	1	1	1
EC: I: WA: 1C	Solid Waste Collection	4	4	4	4	4	4	4	4	4	4	4	3
EC: I: B: 1A	Public Building Sustainability	1	1	1	1	1	1	1	1	1	1	1	1
EC: I: B: 2A	Integrated Building Management Systems in Public Buildings	3	3	3	2	1	3	1	3	4	4	NR	1
EC: I: UP: 1A	Pedestrian Infrastructure	1	4	1	1	1	1	1	1	4	1	1	2
EC: I: UP: 2A	Urban Development and Spatial Planning - Compact	2	4	4	4	1	4	2	4	3	4	4	4

● 95%+ Target
 ● 66-95% of Target
 ● 33-66% of Target
● Less than 33% of Target
 ● No Data or No Target
 ● Data Reported, No Targets Yet Available

Performance Benchmark Targets apply to all sections of the graphic.

Dimension – Environment

KPI		Mjøre og Romsdal	Alesund	Kristiansund	Molde	Aukra	Aure	Averøy	Fljord	Hareid	Herøy	Hustadvika	Gjemnes
EN: EN: AQ: 1C	Air Pollution - PM 2.5	4	NR	NR	4	4	4	4	4	4	4	4	4
EN: EN: AQ: 1C	Air Pollution - PM 2.5	4	4	NR	NR	4	4	4	4	4	4	4	4
EN: EN: AQ: 1C	Air Pollution - NO2	4	4	NR	NR	4	4	4	4	4	4	4	4
EN: EN: AQ: 1C	Air Pollution - SO2	NR	NR	NR	NR	NR	NR	NR	NR	NR	NR	NR	NR
EN: EN: AQ: 1C	Air Pollution - O3	NR	NR	NR	NR	NR	NR	NR	NR	NR	NR	NR	NR
EN: EN: AQ: 2C	GHG Emissions	2	3	3	3	1	1	2	3	3	2	2	2
EN: EN: WS: 1C	Drinking Water Quality	3	4	4	4	4	3	NR	4	4	NR	4	NR
EN: EN: WS: 2C	Water Consumption	1	1	1	2	4	1	NR	1	1	NR	1	3
EN: EN: WS: 3C	Freshwater Consumption	1	1	1	1	1	1	NR	1	1	NR	1	1
EN: EN: WS: 4C	Wastewater Treatment - Primary	2	2	4	4	4	NR	NR	2	1	NR	4	NR
EN: EN: WS: 4C	Wastewater Treatment - Secondary	1	1	1	1	4	NR	NR	1	1	NR	1	NR
EN: EN: WS: 4C	Wastewater Treatment - Tertiary	1	1	1	1	1	NR	NR	1	1	NR	1	NR
EN: EN: WA: 1C	Solid Waste Treatment - Landfill	4	4	4	4	4	4	4	4	4	4	4	4
EN: EN: WA: 1C	Solid Waste Treatment - Burnt	2	4	4	4	4	4	4	4	4	4	4	4
EN: EN: WA: 1C	Solid Waste Treatment - Incinerated	1	1	1	1	1	1	1	1	1	1	1	1
EN: EN: WA: 1C	Solid Waste Treatment - Open Dump	3	4	4	4	4	4	4	4	4	4	4	4
EN: EN: WA: 1C	Solid Waste Treatment - Recycled	2	2	2	3	3	1	2	2	4	4	3	3
EN: EN: WA: 1C	Solid Waste Treatment - Other	2	4	2	2	4	3	2	1	2	2	4	4
EN: EN: EQ: 1C	EMF Exposure	4	4	4	4	4	4	4	4	4	4	4	4
EN: EN: EQ: 2A	Noise Exposure	4	4	3	3	4	4	4	3	4	3	4	3
EN: EN: PSN: 1C	Green Areas	4	4	4	4	4	4	4	4	4	2	4	4
EN: EN: PSN: 2A	Green Area Accessibility	4	4	4	4	4	4	4	4	4	4	4	4
EN: EN: PSN: 3A	Protected Natural Areas	3	1	1	4	1	1	1	4	2	2	1	1
EN: EN: PSN: 4A	Recreational Facilities	4	1	4	4	1	2	1	2	1	4	1	3
EN: E: E: 1C	Renewable Energy Consumption	4	4	4	4	4	4	4	4	4	4	4	4
EN: E: E: 2C	Electricity Consumption	1	1	1	1	4	1	1	1	1	1	1	1
EN: E: E: 3C	Residential Thermal Energy Consumption	NR	4	4	4	4	NR	4	NR	NR	NR	NR	NR
EN: E: E: 4A	Public Building Energy Consumption	2	2	2	2	1	2	2	2	2	1	2	2

- 95%+ Target ● 66-95% of Target ● 33-66% of Target
- Less than 33% of Target ● No Data or No Target ● Data Reported, No Targets Yet Available

Performance Benchmark Targets apply to all sections of the graphic.

Dimension – Environment

KPI	Orsta	Rauma	Sande	Smola	Stranda	Sunnal	Surnadal	Sykkylven	Tingvoll	Ulsten	Vanylven	Vestnes	Volda
EN: EN: AQ: 1C Air Pollution - PM 2.5	4	4	4	4	4	4	4	4	4	4	4	4	4
EN: EN: AQ: 1C Air Pollution - PM 2.5	4	4	4	4	4	4	4	4	4	4	4	4	4
EN: EN: AQ: 1C Air Pollution - NO2	4	4	4	4	4	4	4	4	4	4	4	4	4
EN: EN: AQ: 1C Air Pollution - SO2	NR	NR	NR	NR	4	NR	NR	NR	NR	NR	NR	NR	NR
EN: EN: AQ: 1C Air Pollution - O3	3	NR	NR	NR	4	NR	NR	NR	NR	NR	NR	NR	NR
EN: EN: AQ: 2C GHG Emissions	3	3	2	1	2	1	3	3	2	3	2	3	3
EN: EN: WS: 1C Drinking Water Quality	3	4	4	3	3	4	4	3	4	3	4	3	4
EN: EN: WS: 2C Water Consumption	1	1	1	1	1	2	1	2	1	2	NR	2	3
EN: EN: WS: 3C Freshwater Consumption	1	1	1	1	1	1	1	1	1	1	NR	1	1
EN: EN: WS: 4C Wastewater Treatment - Primary	NR	1	1	NR	3	4	NR	2	4	4	4	1	NR
EN: EN: WS: 4C Wastewater Treatment - Secondary	NR	1	1	NR	1	1	NR	1	1	1	1	1	NR
EN: EN: WS: 4C Wastewater Treatment - Tertiary	NR	1	1	NR	1	1	NR	1	1	1	1	1	NR
EN: EN: WA: 1C Solid Waste Treatment - Landfill	4	4	4	4	4	4	4	4	4	4	4	4	4
EN: EN: WA: 1C Solid Waste Treatment - Burnt	4	4	4	4	4	1	4	4	4	4	4	4	4
EN: EN: WA: 1C Solid Waste Treatment - Incinerated	1	1	1	1	1	2	1	1	1	1	4	1	1
EN: EN: WA: 1C Solid Waste Treatment - Open Dump	4	3	4	4	4	4	4	4	4	4	4	4	4
EN: EN: WA: 1C Solid Waste Treatment - Recycled	3	2	4	2	2	1	2	2	3	4	1	2	3
EN: EN: WA: 1C Solid Waste Treatment - Other	4	1	2	1	1	2	4	1	4	2	1	1	4
EN: EN: EQ: 1C EMF Exposure	4	4	4	4	4	4	4	4	4	4	1	4	4
EN: EN: EQ: 2A Noise Exposure	3	3	4	4	3	4	3	4	4	4	4	3	4
EN: EN: PSN: 1C Green Areas	4	3	4	NR	4	3	4	4	4	4	4	4	4
EN: EN: PSN: 2A Green Area Accessibility	4	4	4	4	4	4	4	4	4	4	4	4	4
EN: EN: PSN: 3A Protected Natural Areas	1	4	1	4	4	4	4	1	1	4	1	1	1
EN: EN: PSN: 4A Recreational Facilities	2	2	4	4	1	2	1	1	1	3	2	2	2
EN: E: E: 1C Renewable Energy Consumption	4	4	4	4	4	4	4	4	4	4	4	4	4
EN: E: E: 2C Electricity Consumption	4	1	1	1	1	1	1	1	1	1	3	1	1
EN: E: E: 3C Residential Thermal Energy Consumption	NR	NR	NR	NR	4	NR	NR	NR	NR	NR	NR	NR	NR
EN: E: E: 4A Public Building Energy Consumption	2	4	2	1	2	2	4	2	2	2	2	2	2

- 95+ Target
- 66-95% of Target
- 33-66% of Target
- Less than 33% of Target
- No Data or No Target
- Data Reported, No Targets Yet Available

Performance Benchmark Targets apply to all sections of the graphic.

Dimension – Society and Culture

KPI		Mjøre og Romstal	Alesund	Kristiansund	Molde	Aukra	Aure	Averøy	Fjord	Hareid	Herøy	Hustadvika	Gjemnes
SC: EH: ED:1C	Student ICT Access	4	4	4	4	4	4	4	4	4	4	4	4
SC: EH: ED:2C	School Enrollment	4	4	4	4	4	4	3	4	4	4	4	4
SC: EH: ED: 3C	Higher Education Degrees	3	3	3	4	3	3	3	3	3	3	3	3
SC: EH: ED: 4C	Adult Literacy	3	3	3	3	4	3	3	3	3	4	3	3
SC: EH: H: 6A	Electronic Health Records	4	4	4	4	4	4	4	4	4	4	4	4
SC: EH: H:1C	Life Expectancy	4	4	4	4	4	4	4	4	4	4	4	4
SC: EH: H: 2C	Maternal Mortality Rate	4	4	4	4	4	4	4	4	4	4	4	4
SC: EH: H:3C	Physicians	3	4	4	4	1	1	1	2	1	1	2	2
SC: EH: H: 4A	In-Patient Hospital Beds	2	4	3	3	3	3	3	3	3	3	3	3
SC: EH: H: 5A	Health Insurance/Public Health Coverage	4	4	4	4	4	4	4	4	4	4	4	4
SC: EH: C: 1C	Cultural Expenditure	1	1	1	1	2	1	1	1	1	1	1	1
SC: EH: C: 2A	Cultural Infrastructure	NA	NA	NA	NA	NA	NA	NA	NA	NA	NA	NA	NA
SC: SH: HO: 1C	Informal Settlements	4	4	4	4	4	4	4	4	4	4	4	4
SC: SH: HO: 2A	Housing Expenditure	4	4	4	4	4	4	4	4	4	4	4	4
SC: SH: SI: 1C	Gender Income Equity	2	1	1	1	1	4	1	3	2	1	3	3
SC: SH: SI: 2C	Gini Coefficient	4	4	4	4	4	4	4	4	4	4	4	4
SC: SH: SI: 3C	Poverty	1	2	2	1	1	1	1	1	1	1	1	1
SC: SH: SI: 4C	Voter Participation	3	3	3	3	4	4	3	4	4	3	4	4
SC: SH: SI: 5A	Child Care Availability	3	3	3	3	4	4	4	4	3	4	4	4
SC: SH: SA: 1C	Natural Disaster Related Deaths	4	4	4	3	4	4	4	4	4	4	4	4
SC: SH: SA: 2C	Disaster Related Economic Losses	4	4	4	4	NR	4	4	4	4	4	4	4
SC: SH: SA: 3A	Resilience Plans	1	1	1	1	1	1	1	1	1	1	1	1
SC: SH: SA: 4A	Population Living in Disaster Prone Areas	2	4	3	2	4	4	4	1	2	4	2	2
SC: SH: SA: 5A	Emergency Services Response Time	1	3	1	1	4	1	1	1	2	1	2	1
SC: SH: SA: 6C	Police Service	1	1	2	2	1	2	1	1	1	1	2	2
SC: SH: SA: 7C	Fire Service	2	2	3	3	4	3	3	4	2	1	1	2
SC: SH: SA: 8C	Violent Crime Rate	2	1	1	2	3	3	3	4	2	2	2	3
SC: SH: SA: 9C	Traffic Fatalities	1	1	4	4	4	4	4	4	4	4	4	1
SC: SH: FS: 1A	Local Food Production	NR	NR	NR	NR	NR	NR	NR	NR	NR	NR	NR	NR

● 95%+ Target
 ● 66-95% of Target
 ● 33-66% of Target
● Less than 33% of Target
 ● No Data or No Target
 ● Data Reported, No Targets Yet Available

Performance Benchmark Targets apply to all sections of the graphic.

Dimension – Society and Culture

KPI		Orsta	Rauma	Sande	Smola	Stranda	Sunnal	Surnadal	Sykkylven	Tingvoll	Ulsten	Vanylven	Vestnes	Volda
SC: EH: ED:1C	Student ICT Access	4	4	4	4	4	4	4	4	4	4	4	4	4
SC: EH: ED:2C	School Enrollment	4	4	3	4	4	3	4	4	4	4	4	4	4
SC: EH: ED: 3C	Higher Education Degrees	3	3	3	2	3	3	3	3	3	4	3	3	4
SC: EH: ED: 4C	Adult Literacy	3	4	3	3	3	3	4	3	3	3	3	3	3
SC: EH: H: 6A	Electronic Health Records	4	4	4	4	4	4	4	4	4	4	4	4	4
SC: EH: H:1C	Life Expectancy	4	4	4	4	4	4	4	4	4	4	4	4	4
SC: EH: H: 2C	Maternal Mortality Rate	4	4	4	4	4	4	4	4	4	4	4	4	4
SC: EH: H:3C	Physicians	2	1	1	1	1	1	1	1	2	2	1	1	1
SC: EH: H: 4A	In-Patient Hospital Beds	3	3	3	3	3	3	3	2	3	3	2	3	3
SC: EH: H: 5A	Health Insurance/Public Health Coverage	4	4	4	4	4	4	4	4	4	4	4	4	4
SC: EH: C: 1C	Cultural Expenditure	1	1	2	1	1	1	1	1	1	1	1	4	1
SC: EH: C: 2A	Cultural Infrastructure	NA	NA	NA	NA	NA	NA	NA	NA	NA	NA	NA	NA	NA
SC: SH: HO: 1C	Informal Settlements	4	4	4	4	4	4	4	4	4	4	4	4	4
SC: SH: HO: 2A	Housing Expenditure	4	4	4	4	4	4	4	4	4	4	4	4	4
SC: SH: SI: 1C	Gender Income Equity	3	1	4	2	4	2	4	3	3	2	2	3	4
SC: SH: SI: 2C	Gini Coefficient	4	4	4	4	4	4	4	4	4	4	4	4	4
SC: SH: SI: 3C	Poverty	1	2	4	1	1	4	1	1	1	1	1	1	1
SC: SH: SI: 4C	Voter Participation	4	4	4	4	3	4	4	4	4	4	4	3	4
SC: SH: SI: 5A	Child Care Availability	4	4	4	4	4	4	4	4	4	4	4	4	4
SC: SH: SA: 1C	Natural Disaster Related Deaths	4	4	4	4	4	4	4	4	4	4	4	4	4
SC: SH: SA: 2C	Disaster Related Economic Losses	4	3	3	4	4	3	4	4	4	4	4	4	4
SC: SH: SA: 3A	Resilience Plans	1	1	1	1	1	1	1	1	1	1	1	1	1
SC: SH: SA: 4A	Population Living in Disaster Prone Areas	1	1	3	4	1	1	4	2	2	4	4	1	3
SC: SH: SA: 5A	Emergency Services Response Time	2	2	1	1	2	2	2	2	2	3	2	1	2
SC: SH: SA: 6C	Police Service	2	1	2	1	1	2	2	2	2	3	1	1	1
SC: SH: SA: 7C	Fire Service	3	1	1	2	2	1	2	1	1	2	1	2	1
SC: SH: SA: 8C	Violent Crime Rate	2	3	3	4	3	4	3	2	2	2	3	3	2
SC: SH: SA: 9C	Traffic Fatalities	4	1	4	4	4	1	4	4	4	4	4	4	1
SC: SH: FS: 1A	Local Food Production	NR	NR	NR	NR	NR	NR	NR	NR	NR	NR	NR	NR	NR

- 95%+ Target
- 66-95% of Target
- 33-66% of Target
- Less than 33% of Target
- No Data or No Target
- Data Reported, No Targets Yet Available

Performance Benchmark Targets apply to all sections of the graphic.



17 SAMARBEID FOR Å NÅ MÅLENE



3 GOD HELSE



14 LIV UNDER VANN



9



9





For more information, please contact:
u4ssc@itu.int
Website: itu.int/go/u4SSC

Published in Switzerland
Geneva, 2021

Photo credits: Møre og Romsdal, Norway