

Manual on Regular Monitoring Query and Visualisation web application

(Version 1.0; Date last updated: 21-01-2020)

The objective of the regular monitoring program in frequency bands between 2 850 kHz and 28 000 kHz is to:

- identify whose emissions are not in compliance with the Radio Regulations (RR);
- provide administrations that do not have monitoring facilities with information for frequency management purposes and to comply with No.3.14 of the RR;
- assemble information on spectrum utilization at the location of the monitoring stations and to derive thereafter how the spectrum is used;
- collect information, when required by Radiocommunication conference, on the use of the bands exclusively allocated to specific services (i.e. broadcasting, maritime, aeronautical) for consideration by the appropriate Radiocommunication Conferences

Monitoring stations participating in the International Monitoring System (IMS) send their reports to the Bureau via their designated centralizing office and in accordance with Article 16 of the RR, the Bureau records and publish periodically the summaries of monitoring information.

Browser compatibility and content accessibility

This web application supports the following browsers:

- Microsoft Edge
- Google Chrome
- Microsoft Internet Explorer 8 and above
- Mozilla Firefox
- Apple Safari
- Opera
- And most modern browsers

This web application is W3C accessibility compliant. Reference: [Web Content Accessibility Guidelines \(WCAG\)](#).

How to query

Define the search criteria for retrieval:
Note that the number inside the brackets [#] corresponds to the column number as described in the [Electronic data format](#).

Measured frequency* from: (KHz) to (KHz)

Observation date (yyyy-mm-dd)* from: to

Mandatory fields.

Frequency slider

Search criteria headers

Advanced search criteria:

+ Particulars of the Monitoring center

- Particulars of the Monitored station

Time of observation from: (HHMM) to: (HHMM)

Field strength: (dB)

Identification:

Administration: [Reference](#)

Class of station: [Reference](#)

Occupied bandwidth: [Reference](#)

Class of emission: [Reference](#) | [Examples](#)

Estimated location:
Longitude:
Latitude:

Bearing to transmitting station: ° (degrees from true North)

Accuracy of the bearing:

Non-conformity with the Radio Regulations:

Remarks:

Particulars

Tooltip for additional info

Search button

Fill the various fields provided to make the final criteria of the query. Measured frequency (from and to) and Observation date (from and to) are mandatory fields. They must be filled. Measured frequency can also be filled by dragging the 2 sliders horizontally. Observation date fields provide drop down calendar. Other fields are found in 'Advanced search criteria' grouped under the particulars of a Monitoring center or of a Monitored station. Click on these criteria headers to switch its display.

Upon the completion of creating the criteria, the search button will be activated. Click the button to return the result. Reset button returns the fields to its initial default values.

This web application is accessibility compliant. You can navigate through different fields using keyboard like tab, shift + tab and the arrows. As you move from one field to another, additional contextual information is provided. Also, certain fields have links to references, example and additional information.

Query result

Reset Search **Records found** **Link to visualisation** Visualise

Query result: **11069** record/s found

SUMMARY #:	Monitoring Period	1	2	3	4	5	6	7	8	9	10	11	12	13	22
361:	01/01/19 - 31/03/19	INS	MSKH-KUPANG	17890.000	13	03	1401	1412	33.0	CNR 1	CHN	BC	9K00E	A3E	
361:	01/01/19 - 31/03/19	I	ROMA	17895.000	03	01	1733	1759	30.1			BC	10K0E	A3E	
361:	01/01/19 - 31/03/19	INS	MSKH-KUPANG	17895.000	13	03	1645	1650	24.0	R.SAUDI	ARS	BC	9K00E	A3E	
361:	01/01/19 - 31/03/19	F	RAMBOUILLET	17895.000	16	03	1300	1300	35.0	RADIO SAUDI	ARS	BC	10K0	A3E	
361:	01/01/19 - 31/03/19	F	RAMBOUILLET	17895.000	16	03	1300	1300	35.0	RADIO SAUDI	STP	BC	10K0E	A3E	6
361:	01/01/19 - 31/03/19	J	TOKYO	17895.000	28	03	0500	2400		SAUDI R.I.	ARS	BC		A3E	
361:	01/01/19 - 31/03/19	J	TOKYO	17919.000	10	01	0641	2400		GUAM		FA		J2D	
361:	01/01/19 - 31/03/19	J	TOKYO	17919.000	21	01	0446	2400		GUAM		FA		J2D	
361:	01/01/19 - 31/03/19	J	TOKYO	17919.000	28	01	0223	2400		GUAM		FA		J2D	
361:	01/01/19 - 31/03/19	J	TOKYO	17919.000	12	02	1050	2400		GUAM		FA		J2D	
361:	01/01/19 - 31/03/19	J	TOKYO	17919.000	26	02	0706	2400		GUAM		FA		J2D	
361:	01/01/19 - 31/03/19	J	TOKYO	17919.000	04	03	0502	2400		GUAM		FA		J2D	
361:	01/01/19 - 31/03/19	J	TOKYO	17919.000	11	03	0240	2400		GUAM		FA		J2D	
361:	01/01/19 - 31/03/19	I	ROMA	17919.000	14	03	0916	2400	2.0	016 GUAM CH2	USA	MA	3K00E	J2D	
361:	01/01/19 - 31/03/19	I	ROMA	17922.000	14	03	0905	2400	5.0	008 JOHANNESBURG CH2	AFS	MA	3K10	J2D	
361:	01/01/19 - 31/03/19	I	ROMA	17928.000	14	03	1002	2400	5.0	017 TELDE CH 2	E	MA	3K10	J2D	
361:	01/01/19 - 31/03/19	F	RAMBOUILLET	17930.000	03	02	1000	1830	10.0				2K80E	J7B	9
361:	01/01/19 - 31/03/19	J	TOKYO	17969.990	10	01	0643	2400				BC		A3E	
361:	01/01/19 - 31/03/19	F	RAMBOUILLET	18043.900	04	02	0700	1400	15.0				3K40E	J7B	9
361:	01/01/19 - 31/03/19	F	RAMBOUILLET	18043.900	04	02	1440	1550	15.0				3K40E	J7B	9
361:	01/01/19 - 31/03/19	I	ROMA	18050.000	12	03	1214	2400	47.0	OTH RADAR	CYP	FX	20K0	P0N	
361:	01/01/19 - 31/03/19	F	RAMBOUILLET	18055.000	04	02	1011	1021	18.0				20K0E	PXX	9
361:	01/01/19 - 31/03/19	J	TOKYO	18060.000	07	01	1048	2400			AUS			F3C	
361:	01/01/19 - 31/03/19	J	TOKYO	18060.000	10	01	0746	2400						F3C	
361:	01/01/19 - 31/03/19	J	TOKYO	18060.000	21	01	0606	2400						F3C	

Page: 1 2 3 4 5 6 7 8 9 10 11 12 13 14 15 16 17 18 19 20 ... >|

Link to item details **Link to page number** **Table of result**

Successful query returns the records found in a table view below the search button. Its title displays the number of records found. Click on any of the table's headers (in blue) to sort the result accordingly. Hovering the mouse (or by keyboard) on its header shows information in tooltip. The query displays 25 results per page. Click on any page number to view results on other pages.

View item details

Click on any item under column '3' (Measured frequency) to display the item details.

Breadcrumb menu

YOU ARE HERE [HOME](#) > [ITU-R](#) > [TERRESTRIAL SERVICES](#) > [MONITORING](#) > [QUERY](#) > MONITORED STATION EMITTING IN BANDS BETWEEN 2 850 KHZ AND 28 000 KHZ

SHARE [f](#) [t](#) [in](#) [e](#)

Summary #: 294: 01/04/02 - 30/06/02		[2] Monitoring Center: TOKYO of [1] Administration: J	
[3] Measured frequency 12843.000	[10] Administration responsible for transmission	[9] Identification HLO	
[4] Day of observation 22	[5] Month of observation 04	[6] Starting time 0305	[7] Finishing time 2400
[11] Class of station FC	[12] Occupied bandwidth	[13] Class of emission A1A	[8] Field Strength
Location: [14][15][16] Longitude	[17][18][19] Latitude	[20] Bearing to transmitting station	[21] Accuracy of the bearing
[22] Non-conformity with the RR (see No. 16.8)	[23] Remarks		

Item details

Navigation

The breadcrumb menu shows your location. Click 'QUERY' to go back to the main query page.

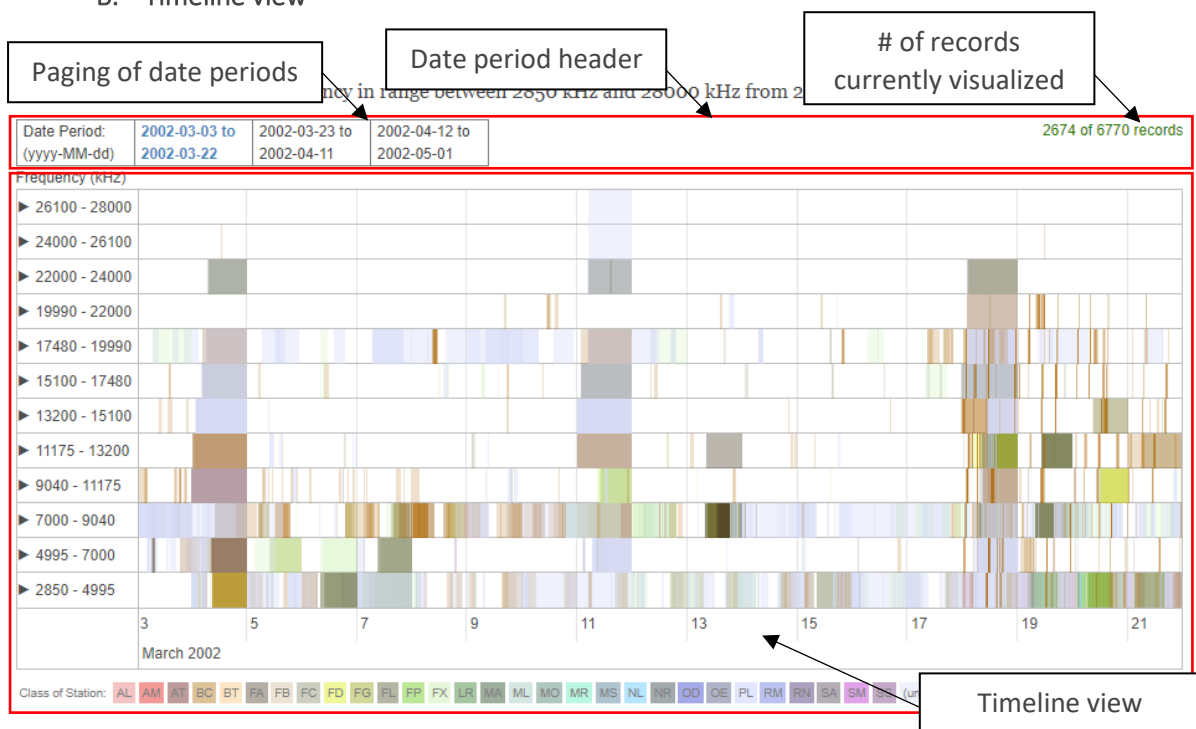
Visualisation

The visualisation page contains 4 parts, namely: Date period header, Timeline view, Table of summaries view and Choropleth map view.

A. Date Period Header

Date period header contains the paging of date periods and number of records currently visualised. The paging of date periods only appears whenever the data is too large to be displayed efficiently. It parses the data into reasonable date periods.

B. Timeline view



Timeline view displays frequency occupation along the date line. The presented date line is contained within the page of a given date period. The color indicates the class of station. The intensity of the color manifests different class of stations are overlapping in the given frequency range while its horizontal width accounts for the duration of its occupancy. Click on any item along the Frequency axis (y-axis) to drill into frequency details. Here, every frequency details are displayed with additional information in tooltips.

Click and drag the view to move it along the dateline (x-axis). The timeline view also responds to scrolling. It will zoom in or out.

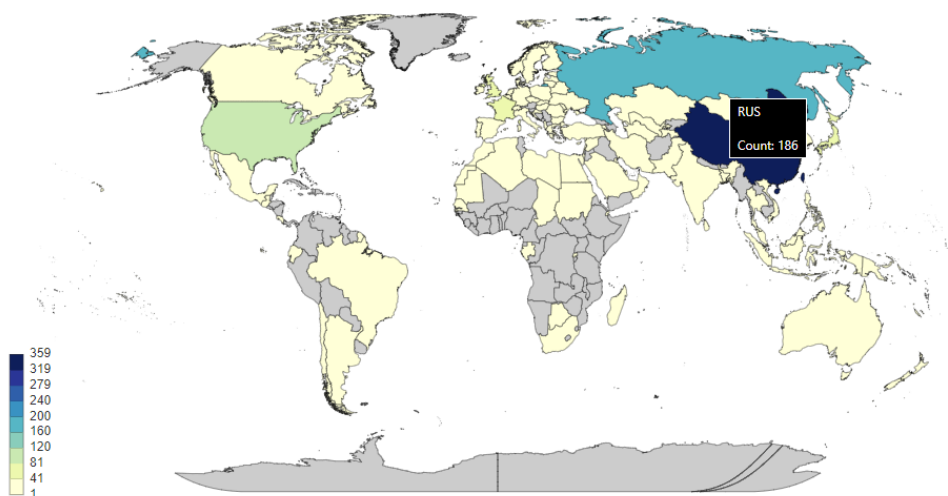
C. Table of summaries view

Summaries header

– View summary of all observed emissions			
Class of Station	Total count of observed emissions	Admin responsible for transmission	Total count of observed emissions
BC	3063	(unidentified)	2916
(unidentified)	2279	CHN	821
FC	749	RUS	438
FX	420	USA	259
FA	137	KRE	217
FD	37	J	199
SS	28	G	137
MS	23	F	127
AL	14	D	115
FG	12	PHL	95
NL	5	AUS	75
LR	2	I	62
AX	1	GRC	54
		THA	52
		S	50
		ISR	47

Clicking the Summaries header toggles the 2 tables shown above. These tables hold the total count of observed emissions by class of stations and by administrations responsible for transmissions. They present the total count as a reference to the partial views presented in the Timeline and Choropleth views.

D. Choropleth map view



In consonance with the Timeline view, this thematic map shades the countries geographical map in proportion to the count of observed emission for a given date period as indicated in the Date period header.

Click on the map to toggle the zooming in or out. Hover the mouse over a country and a tooltip shows. Countries in shade of grey indicates no observed emission. IDWM is the reference of this world map.

Sessions and cookies

This web application uses Session Id to keep track the user as she/he navigates in the web application. Session Id is a token of information stored in the user's local computer called cookie. However, in cases where cookie is not allowed, the application will automatically keep the Session Id either in the URL or in the page. Each session is set to 30 minutes only.

Users will be timed out if inactive for more than the specified time. If this happens, just go back to the [initial page](#) of the application.