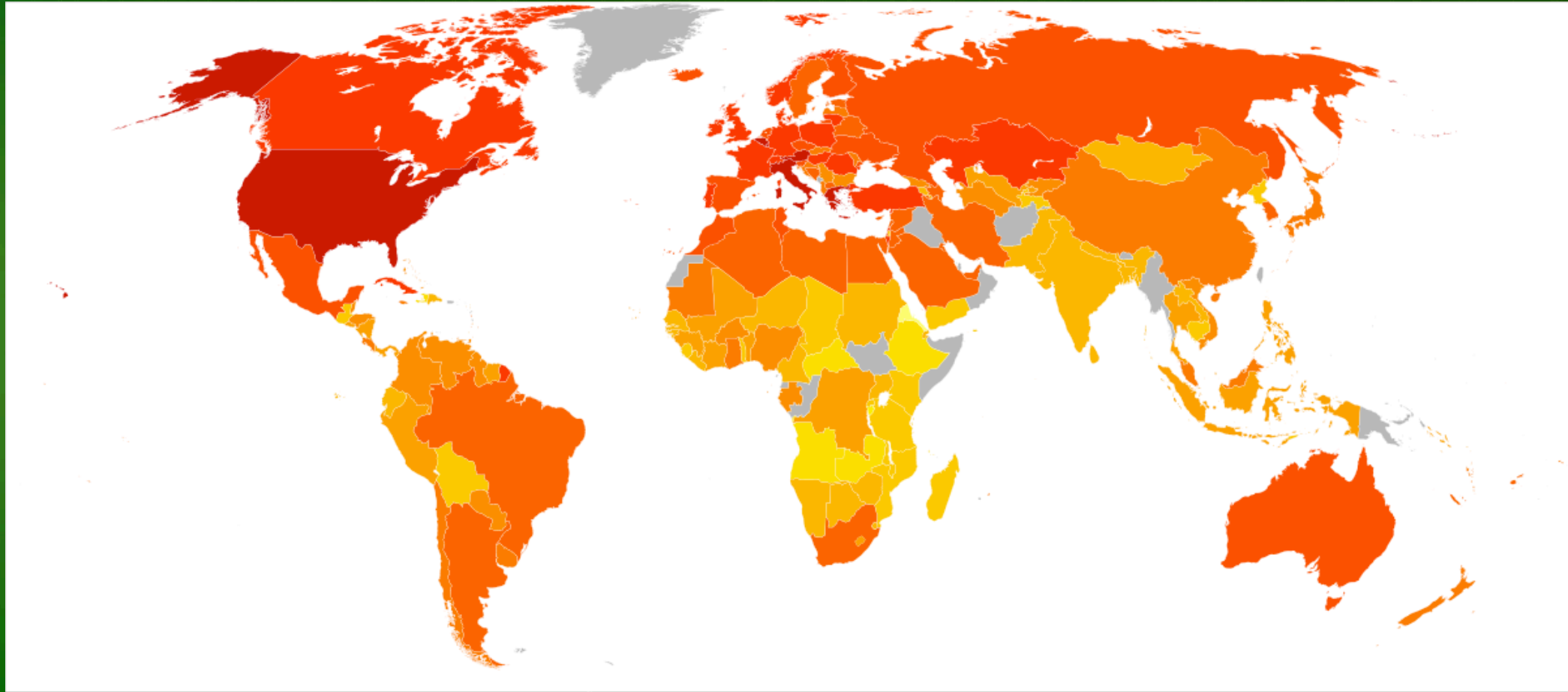


Supporting Humanitarian Emergency Situations:

Information in Risk, Resilience and Recovery of Food Systems

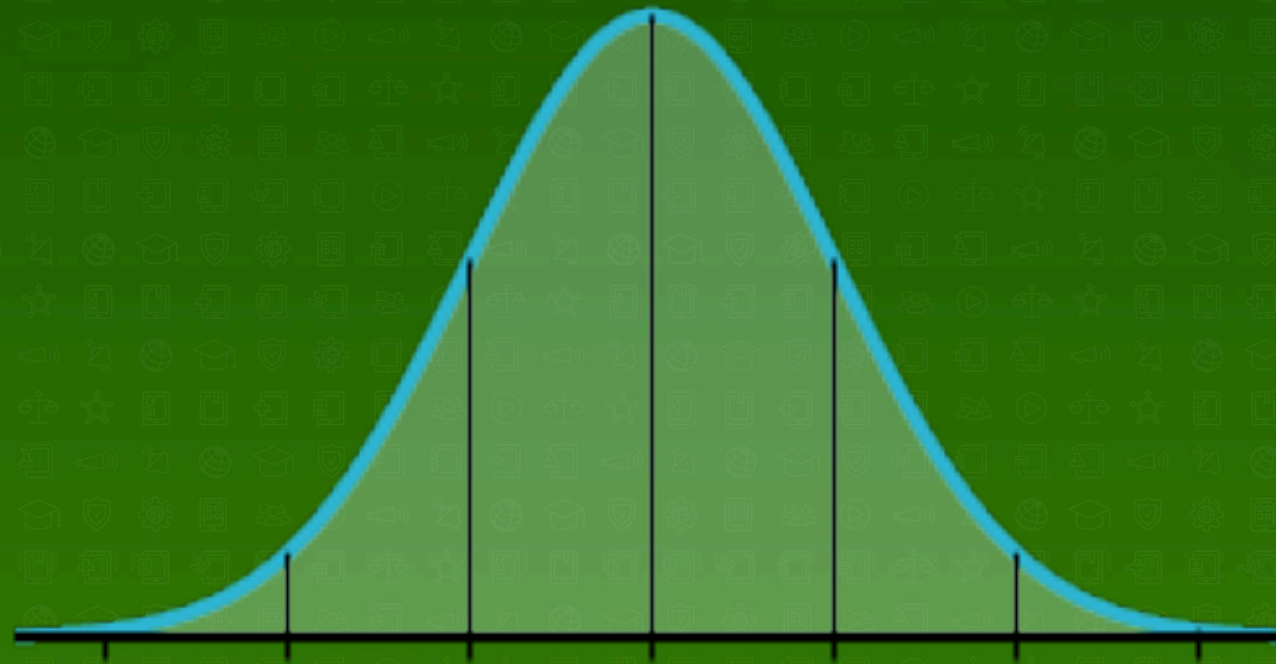
Key information on food systems?



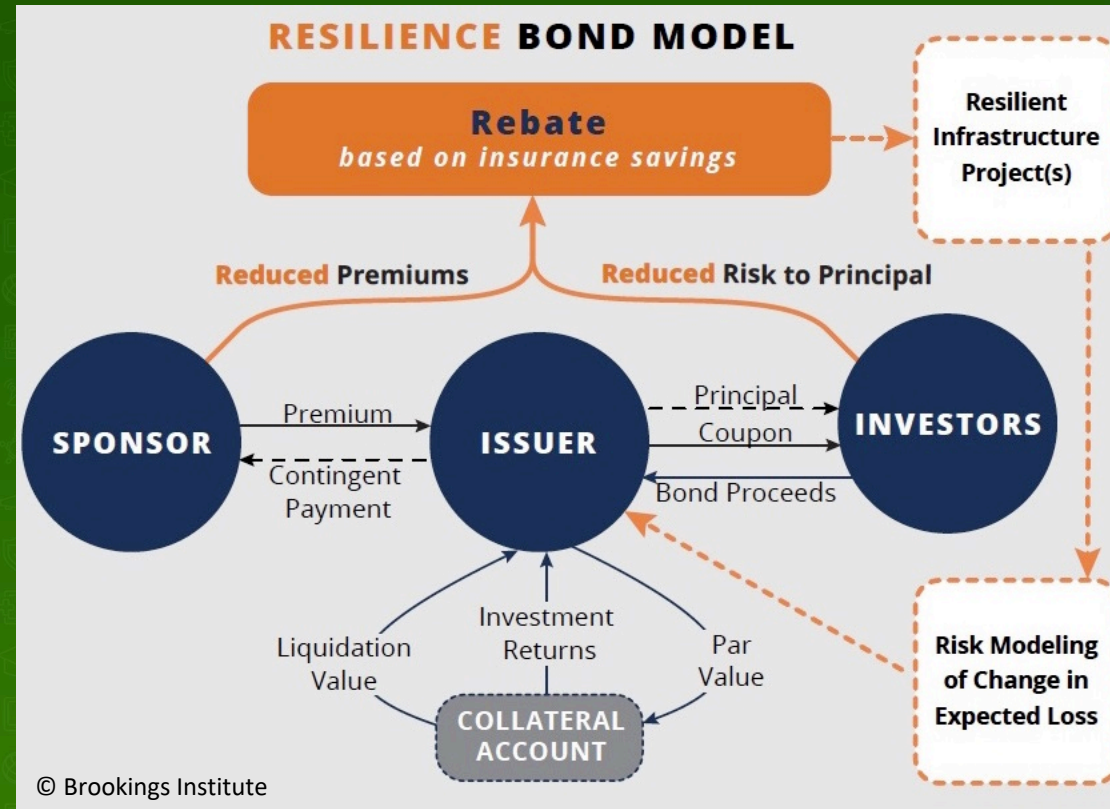
What data gaps are there?



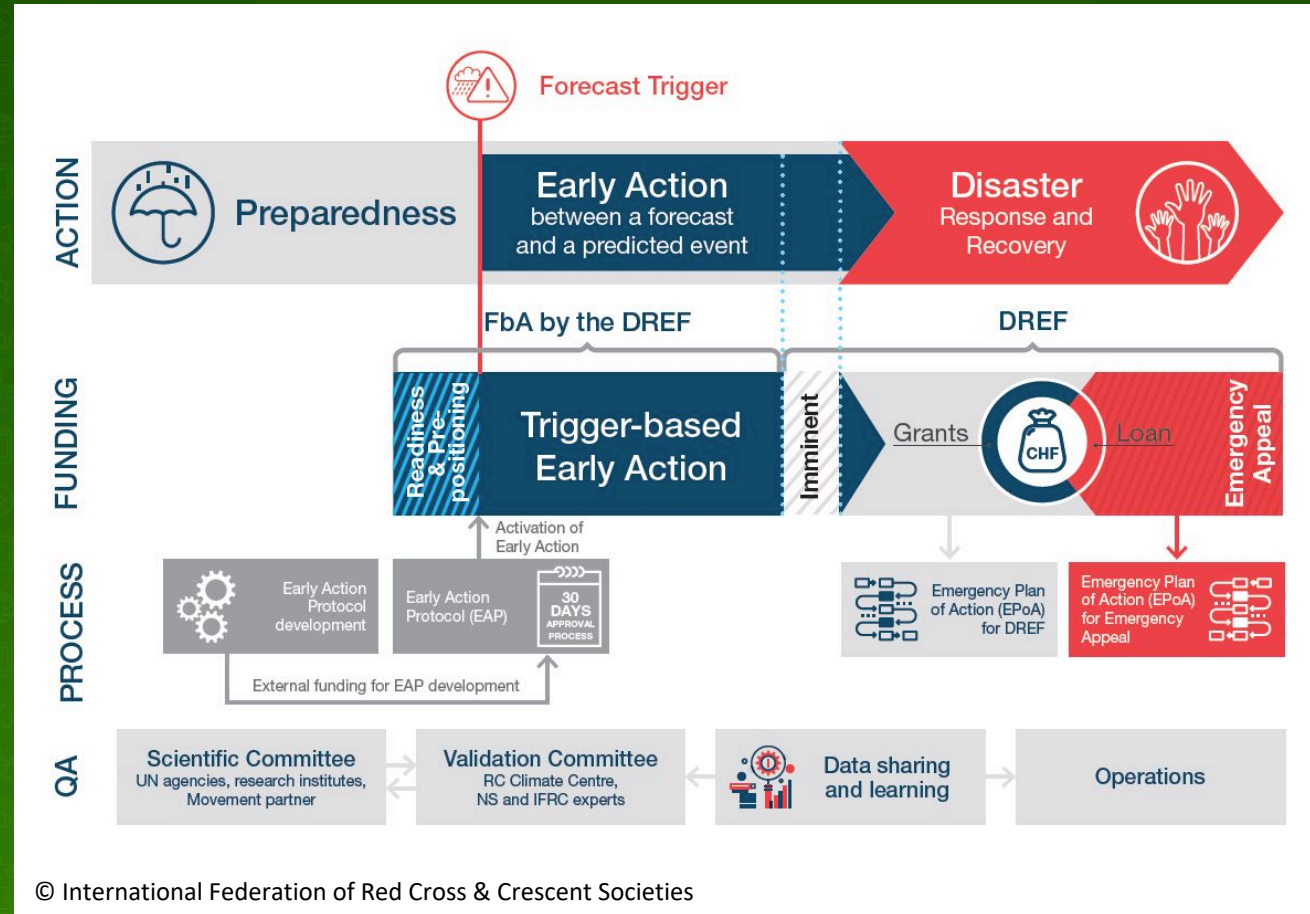
How can more data better inform risk models?



How does this lead to increased resilience?

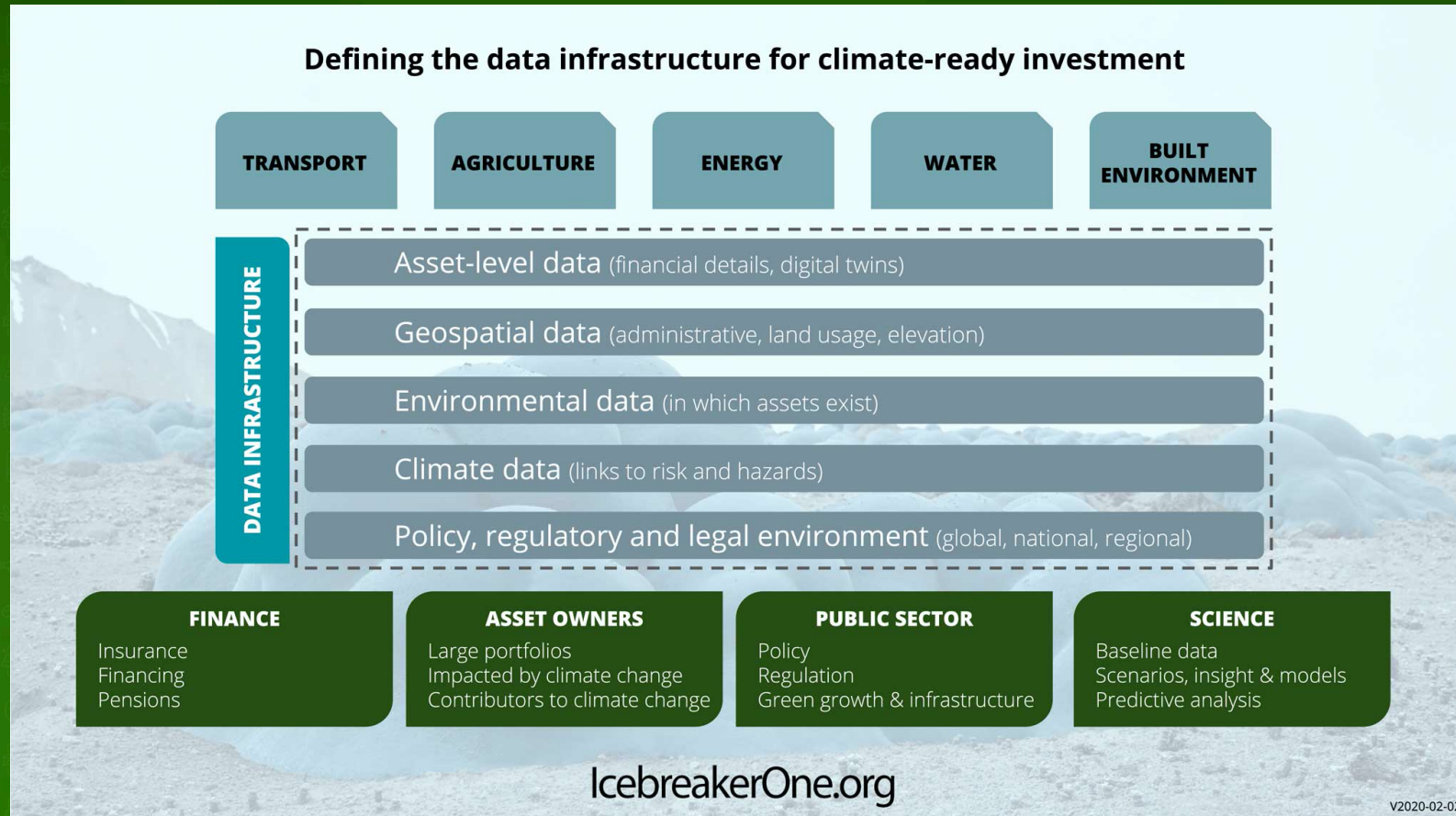


How could this lead to more rapid recovery?



© International Federation of Red Cross & Crescent Societies

What is the collaborative approach to data?



Contact:

sahil@allfed.info,

+447989996483



WSIS+15 FORUM 2020