

ITU-T

TELECOMMUNICATION
STANDARDIZATION SECTOR
OF ITU

D.1040

(08/2020)

**SERIES D: TARIFF AND ACCOUNTING PRINCIPLES
AND INTERNATIONAL TELECOMMUNICATION/ICT
ECONOMIC AND POLICY ISSUES**

Recommendations for international
telecommunication/ICT economic and policy issues –
International Internet connectivity; and Tariff, Charging
Issues of Settlements Agreement of Trans-multi-country
Terrestrial Telecommunication

**Optimizing terrestrial cable utilization across
multiple countries to boost regional and
international connectivity**

Recommendation ITU-T D.1040

ITU-T D-SERIES RECOMMENDATIONS

TARIFF AND ACCOUNTING PRINCIPLES AND INTERNATIONAL TELECOMMUNICATION/ICT
ECONOMIC AND POLICY ISSUES

TERMS AND DEFINITIONS	D.0
GENERAL TARIFF PRINCIPLES	
Private leased telecommunication facilities	D.1–D.9
Tariff principles applying to data communication services over dedicated public data networks	D.10–D.39
Charging and accounting in the international public telegram service	D.40–D.44
Charging and accounting in the international telemessage service	D.45–D.49
Principles applicable to GII-Internet	D.50–D.59
Charging and accounting in the international telex service	D.60–D.69
Charging and accounting in the international facsimile service	D.70–D.75
Charging and accounting in the international videotex service	D.76–D.79
Charging and accounting in the international phototelegraph service	D.80–D.89
Charging and accounting in the mobile services	D.90–D.99
Charging and accounting in the international telephone service	D.100–D.159
Drawing up and exchange of international telephone and telex accounts	D.160–D.179
International sound- and television-programme transmissions	D.180–D.184
Charging and accounting for international satellite services	D.185–D.189
Transmission of monthly international accounting information	D.190–D.191
Service and privilege telecommunications	D.192–D.195
Settlement of international telecommunication balances of accounts	D.196–D.209
Charging and accounting principles for international telecommunication services provided over the ISDN	D.210–D.260
Economic and policy factors relevant to the efficient provision of international telecommunication services	D.261–D.269
Charging and accounting principles for next generation networks (NGN)	D.270–D.279
Charging and accounting principles for universal personal telecommunication	D.280–D.284
Charging and accounting principles for intelligent network supported services	D.285–D.299
RECOMMENDATIONS FOR REGIONAL APPLICATION	
Recommendations applicable in Europe and the Mediterranean Basin	D.300–D.399
Recommendations applicable in Latin America	D.400–D.499
Recommendations applicable in Asia and Oceania	D.500–D.599
Recommendations applicable to the African Region	D.600–D.699
Recommendations applicable to the Arab Region	D.700–D.799
Recommendations applicable to the Eastern Europe, Central Asia and Transcaucasia Region	D.800–D.899
RECOMMENDATIONS FOR INTERNATIONAL TELECOMMUNICATION/ICT ECONOMIC AND POLICY ISSUES	
Charging and accounting/settlement mechanisms for international telecommunications services	D.1000–D.1019
Economic and policy factors relevant to the efficient provision of international telecommunication services	D.1020–D.1039
International Internet connectivity; and Tariff, Charging Issues of Settlements Agreement of Trans-multi-country Terrestrial Telecommunication	D.1040–D.1059
International mobile roaming issues	D.1060–D.1079
Alternative calling procedures and misappropriation and misuse of facilities and services	D.1080–D.1099
Economic and regulatory impact of the Internet, convergence (services or infrastructure) and new services	D.1100–D.1119
Definition of relevant markets, competition policy and identification of operators with significant market power (SMP)	D.1120–D.1139
Economic and policy aspects of big data and digital identity in international telecommunications services and networks	D.1140–D.1159
Economic and policy issues pertaining to Mobile Financial Services (MFS)	D.1160–D.1179

For further details, please refer to the list of ITU-T Recommendations.

Recommendation ITU-T D.1040

Optimizing terrestrial cable utilization across multiple countries to boost regional and international connectivity

Summary

Recommendation ITU-T D.1040 provides a collaborative framework that can be applied in order to promote optimal cable utilization across multiple countries and boost regional and international connectivity. The framework is based on a proportional allocation model, which allocates circuits based on the length of fibre contributed to the terrestrial multi-country end-to-end cable network.

History

Edition	Recommendation	Approval	Study Group	Unique ID*
1.0	ITU-T D.1040	2020-08-28	3	11.1002/1000/14268

Keywords

Cooperation model, end-to-end connectivity, Internet traffic boost, optimization of terrestrial cable use, trans-multi-country terrestrial cable, unified.

* To access the Recommendation, type the URL <http://handle.itu.int/> in the address field of your web browser, followed by the Recommendation's unique ID. For example, <http://handle.itu.int/11.1002/1000/11830-en>.

FOREWORD

The International Telecommunication Union (ITU) is the United Nations specialized agency in the field of telecommunications, information and communication technologies (ICTs). The ITU Telecommunication Standardization Sector (ITU-T) is a permanent organ of ITU. ITU-T is responsible for studying technical, operating and tariff questions and issuing Recommendations on them with a view to standardizing telecommunications on a worldwide basis.

The World Telecommunication Standardization Assembly (WTSA), which meets every four years, establishes the topics for study by the ITU-T study groups which, in turn, produce Recommendations on these topics.

The approval of ITU-T Recommendations is covered by the procedure laid down in WTSA Resolution 1.

In some areas of information technology which fall within ITU-T's purview, the necessary standards are prepared on a collaborative basis with ISO and IEC.

NOTE

In this Recommendation, the expression "Administration" is used for conciseness to indicate both a telecommunication administration and a recognized operating agency.

Compliance with this Recommendation is voluntary. However, the Recommendation may contain certain mandatory provisions (to ensure, e.g., interoperability or applicability) and compliance with the Recommendation is achieved when all of these mandatory provisions are met. The words "shall" or some other obligatory language such as "must" and the negative equivalents are used to express requirements. The use of such words does not suggest that compliance with the Recommendation is required of any party.

INTELLECTUAL PROPERTY RIGHTS

ITU draws attention to the possibility that the practice or implementation of this Recommendation may involve the use of a claimed Intellectual Property Right. ITU takes no position concerning the evidence, validity or applicability of claimed Intellectual Property Rights, whether asserted by ITU members or others outside of the Recommendation development process.

As of the date of approval of this Recommendation, ITU had not received notice of intellectual property, protected by patents, which may be required to implement this Recommendation. However, implementers are cautioned that this may not represent the latest information and are therefore strongly urged to consult the TSB patent database at <http://www.itu.int/ITU-T/ipr/>.

© ITU 2020

All rights reserved. No part of this publication may be reproduced, by any means whatsoever, without the prior written permission of ITU.

Table of Contents

	Page
1 Scope	1
2 References.....	1
3 Definitions	1
3.1 Terms defined elsewhere	1
3.2 Terms defined in this Recommendation.....	1
4 Abbreviations and acronyms	1
5 Conventions	2
6 Towards cooperation for boosting regional and international connectivity	2
7 The proportional allocation method.....	2
8 The TTC consortium for the proportional allocation method	3
9 Application of the present Recommendation	3
Bibliography.....	4

Introduction

Most countries around the globe have completed the construction of their backbone terrestrial cable networks. However, the existing terrestrial cables are only effectively connected and utilized between two neighbouring countries. Once three or more countries are involved, the cables tend to be under-used because the transit countries over-charge other countries for their transit services. As a result, the terrestrial cables are not reaching their full potential in boosting regional and international connectivity.

It is of great benefit for Member States to optimize terrestrial cable utilization across multiple countries to boost regional and international connectivity for the following reasons, among others:

- 1) With more international internet traffic to carry, the capacity of the existing trans-border and domestic backbone networks can be put into full use.
- 2) A terrestrial cable route can provide backup for other submarine/terrestrial cable routes, which will increase network stability.
- 3) It is particularly conducive to solving the problems of landlocked countries in accessing international Internet.
- 4) Enhanced terrestrial connectivity will boost international internet traffic, which will eventually flow to submarine cables. The combination of terrestrial and submarine cables will greatly improve international connectivity.

The bottleneck for efficient utilization of the existing terrestrial cable resources is long existent and obvious: without a universally accepted cooperation model among telecom operators in different Member States, the intermediate countries often charges excessively high for transit services and the negotiations are usually complicated and ineffective, which makes it extremely difficult to form a trans-multi-country terrestrial cable network.

To address this problem, this Recommendation proposes a cooperation model to optimize the utilization of the existing terrestrial cables, so that they can play a larger role in boosting regional and international connectivity.

Recommendation ITU-T D.1040

Optimizing terrestrial cable utilization across multiple countries to boost regional and international connectivity

1 Scope

This Recommendation provides a cooperation model that can promote optimal cable utilization across multiple countries and boost regional and international connectivity. The model is based on proportional allocation method, which allocates end-to-end circuit capacity based on the length of fibre contributed to the trans-multi-country terrestrial cable network.

Throughout this Recommendation, the terms "cable" or "trans-multi-country terrestrial cable network" refer to existing terrestrial fibre cables already deployed.

The scope of this Recommendation is limited to the physical terrestrial cable network, i.e., the transport network. The various and more complicated factors that impact the charging and costs of the Internet, i.e., the Internet Protocol (IP) network, are not discussed herein. Recommendation ITU-T D.50 [b-ITU-T D.50] and its associated Supplements should be consulted for the provisions of IP-based international Internet connections.

2 References

The following ITU-T Recommendations and other references contain provisions that, through reference in this text, constitute provisions of the present Recommendation. At the time of publication, the editions indicated were valid. All Recommendations and other references are subject to revision; users of this Recommendation are therefore encouraged to investigate the possibility of applying the most recent edition of the Recommendations and other references listed below. A list of the currently valid ITU-T Recommendations is regularly published. The reference to a document within this Recommendation does not give it, as a stand-alone document, the status of a Recommendation.

None.

3 Definitions

3.1 Terms defined elsewhere

None.

3.2 Terms defined in this Recommendation

This Recommendation defines the following terms:

3.2.1 trans-multi-country terrestrial cable: An existing terrestrial cable that passes through multiple countries.

3.2.2 contribution (of fibre-optic cable): In a settlement agreement of trans-multi-country terrestrial cable, the fibre-optic cable committed by each member operator to be used in the route of the entire trans-multi-country terrestrial cable. To fulfil the commitment, they can build new cables or use the existing ones.

4 Abbreviations and acronyms

This Recommendation uses the following abbreviations and acronyms:

DWDM	Dense Wavelength Division Multiplexing
IP	Internet Protocol
TTC	Trans-multi-country Terrestrial Cable

5 Conventions

None.

6 Towards cooperation for boosting regional and international connectivity

6.1 In the context of the under-utilization of terrestrial cables, Member States are encouraged to foster international cooperation to boost connectivity and optimize the use of terrestrial cables.

6.2 Member States, Sector Members and other interested parties should cooperate, where applicable, to reduce the cost of connectivity, in particular for landlocked countries.

7 The proportional allocation method

7.1 In order to address the issues above, Member States, Sector Members and other interested parties may consider, as one of the options tackling this issue, a proportional allocation method, where each party involved contributes the cable strand that passes through its own country to form an end-to-end trans-multi-country terrestrial cable (TTC) network, and are allocated a portion of the designed capacity of the network that is in proportion to the length of its fibre contribution.

7.2 The key principle underlying this method is to allocate the designed circuit capacity of the end-to-end TTC to each operator in proportion to the length of cable it has contributed. Taking the three-country scenario as an example (see Figure 1 below), countries A, B, and C contribute their terrestrial cable resources L_A , L_B and L_C respectively to form an end-to-end TTC from N1 to N2.

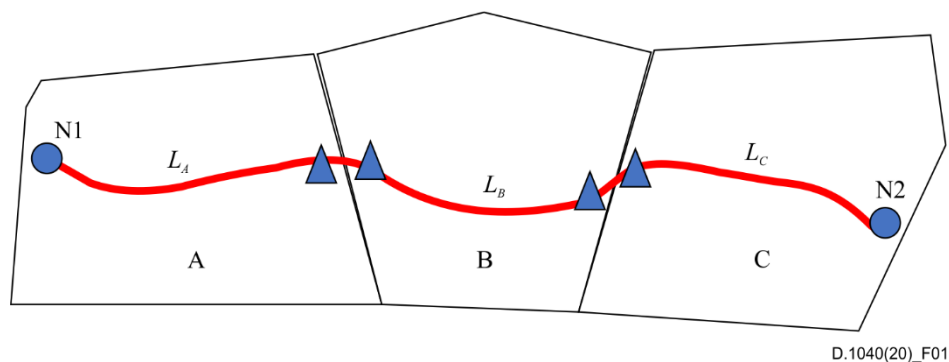


Figure 1 – The proportional allocation method

Countries A, B and C are all allocated a number of end-to-end TTC circuits in proportion to the length of their contribution. The allocated circuits may be for their own use or for sale.

If X_i is the number of circuits to be allocated to country i , the formula is as follows:

$$X_i = \left\lfloor \frac{L_i}{(L_A + L_B + L_C)} \times \lambda \right\rfloor, \quad i = A, B \text{ or } C, \text{ and } \lambda \text{ is the total number of circuits.}^1$$

Similarly, the values of b and c , which are the circuits allocated to countries B and C, can be calculated.

¹ Multiply the ratio of the contribution-length-by-country- i to the total-route-length by the total-number-of-circuits λ , and then round the value. λ is usually 40 or 80.

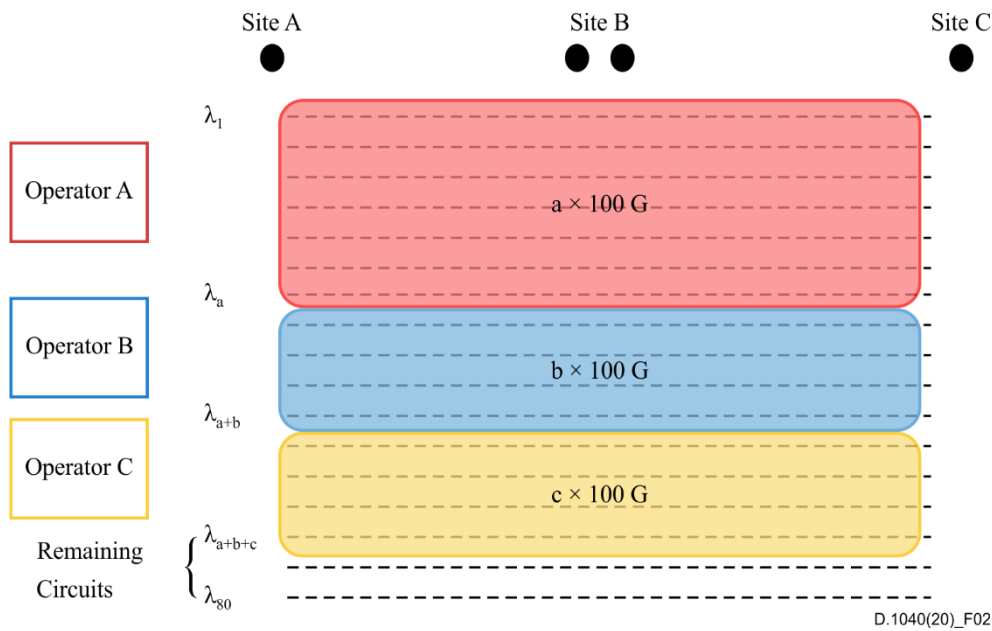


Figure 2 – The algorithm of circuit allocation (80x100Gbps DWDM system)

7.3 The remaining circuits (1 or 2 circuits) can be made available for sale. The benefits after sale can be divided by all member operators in proportion to their contribution. In addition, if a certain operator contributes a cable that is too short compared to other operators' contributions but is indispensable in the route, it is best to guarantee that this operator is allocated at least one circuit.

8 The TTC consortium for the proportional allocation method

8.1 In order to operationalize the proportional allocation method described in clause 7, a TTC consortium may be established, which would be responsible for the planning, construction and maintenance of the TTC.

8.2 The TTC consortium should adopt common technical standards, construction and maintenance, resource scheduling, fault handling, and one-stop configuration and management. The purpose is to connect the scattered networks and form a regional or international network based on the cooperation model.

9 Application of the present Recommendation

9.1 Member States, taking into account specific national or regional conditions, should consider encouraging their telecommunication operators to cooperate to optimize terrestrial cable utilization across multiple countries to boost regional and international connectivity, using models such as the one described in the present Recommendation.

Bibliography

[b-ITU-T D.50] Recommendation ITU-T D.50 (2011), *International Internet connection*.

SERIES OF ITU-T RECOMMENDATIONS

Series A	Organization of the work of ITU-T
Series D	Tariff and accounting principles and international telecommunication/ICT economic and policy issues
Series E	Overall network operation, telephone service, service operation and human factors
Series F	Non-telephone telecommunication services
Series G	Transmission systems and media, digital systems and networks
Series H	Audiovisual and multimedia systems
Series I	Integrated services digital network
Series J	Cable networks and transmission of television, sound programme and other multimedia signals
Series K	Protection against interference
Series L	Environment and ICTs, climate change, e-waste, energy efficiency; construction, installation and protection of cables and other elements of outside plant
Series M	Telecommunication management, including TMN and network maintenance
Series N	Maintenance: international sound programme and television transmission circuits
Series O	Specifications of measuring equipment
Series P	Telephone transmission quality, telephone installations, local line networks
Series Q	Switching and signalling, and associated measurements and tests
Series R	Telegraph transmission
Series S	Telegraph services terminal equipment
Series T	Terminals for telematic services
Series U	Telegraph switching
Series V	Data communication over the telephone network
Series X	Data networks, open system communications and security
Series Y	Global information infrastructure, Internet protocol aspects, next-generation networks, Internet of Things and smart cities
Series Z	Languages and general software aspects for telecommunication systems