

International Telecommunication Union

ITU-T

TELECOMMUNICATION
STANDARDIZATION SECTOR
OF ITU

H.248.2

(01/2005)

SERIES H: AUDIOVISUAL AND MULTIMEDIA SYSTEMS
Infrastructure of audiovisual services – Communication
procedures

**Gateway control protocol: Facsimile, text
conversation and call discrimination packages**

ITU-T Recommendation H.248.2



ITU-T H-SERIES RECOMMENDATIONS
AUDIOVISUAL AND MULTIMEDIA SYSTEMS

CHARACTERISTICS OF VISUAL TELEPHONE SYSTEMS	H.100–H.199
INFRASTRUCTURE OF AUDIOVISUAL SERVICES	
General	H.200–H.219
Transmission multiplexing and synchronization	H.220–H.229
Systems aspects	H.230–H.239
Communication procedures	H.240–H.259
Coding of moving video	H.260–H.279
Related systems aspects	H.280–H.299
Systems and terminal equipment for audiovisual services	H.300–H.349
Directory services architecture for audiovisual and multimedia services	H.350–H.359
Quality of service architecture for audiovisual and multimedia services	H.360–H.369
Supplementary services for multimedia	H.450–H.499
MOBILITY AND COLLABORATION PROCEDURES	
Overview of Mobility and Collaboration, definitions, protocols and procedures	H.500–H.509
Mobility for H-Series multimedia systems and services	H.510–H.519
Mobile multimedia collaboration applications and services	H.520–H.529
Security for mobile multimedia systems and services	H.530–H.539
Security for mobile multimedia collaboration applications and services	H.540–H.549
Mobility interworking procedures	H.550–H.559
Mobile multimedia collaboration inter-working procedures	H.560–H.569
BROADBAND AND TRIPLE-PLAY MULTIMEDIA SERVICES	
Broadband multimedia services over VDSL	H.610–H.619

For further details, please refer to the list of ITU-T Recommendations.

ITU-T Recommendation H.248.2

Gateway control protocol: Facsimile, text conversation and call discrimination packages

Summary

This Recommendation defines packages that extend the applicability of the H.248.1 Gateway Control Protocol Recommendation. Specifically, this Recommendation describes packages for fax, text telephone, call type discrimination, and data call detection for use with the H.248.1 Gateway Control Protocol. As defined in ITU-T Rec. H.248.1, a "package" is an extension to H.248.1 that supports specific behaviour.

The packages are intended for control over gateway functions for transport of facsimile or text conversation between different network environments. Extensions can be made for other kinds of data transport.

- **The Call Type Discrimination package** defines control and monitoring of a line for the signalling protocols used in the beginning of a session of data transmission for fax, text telephony or data. This package has been revised to enable the MG to autonomously determine the call type to be supported.
- **The Text Telephone package** defines control of a text telephone session in any of the modes supported by the automoding text telephone Recommendation, ITU-T Rec. V.18.
- **The Fax package** defines control of a fax transmission.
- **The Fax/Textphone/Modem Tones Detection package** defines control over a termination for detection of any signals from a fax, text telephone or data modem during a connection in voice mode.
- **The Text Conversation package** defines control over a real-time interactive text conversation session using a universal presentation format and transferred with a transport method from a multimedia protocol in any network environment.
- **The IP Fax package** defines control over facsimile transmission in a packet network.

All the packages have been editorially modified to align with the H.248.1 Packages Template.

NOTE – This Recommendation has been renumbered. It was previously known as ITU-T Rec. H.248, Annex F.

Source

ITU-T Recommendation H.248.2 was approved on 8 January 2005 by ITU-T Study Group 16 (2005-2008) under the ITU-T Recommendation A.8 procedure.

FOREWORD

The International Telecommunication Union (ITU) is the United Nations specialized agency in the field of telecommunications. The ITU Telecommunication Standardization Sector (ITU-T) is a permanent organ of ITU. ITU-T is responsible for studying technical, operating and tariff questions and issuing Recommendations on them with a view to standardizing telecommunications on a worldwide basis.

The World Telecommunication Standardization Assembly (WTSA), which meets every four years, establishes the topics for study by the ITU-T study groups which, in turn, produce Recommendations on these topics.

The approval of ITU-T Recommendations is covered by the procedure laid down in WTSA Resolution 1.

In some areas of information technology which fall within ITU-T's purview, the necessary standards are prepared on a collaborative basis with ISO and IEC.

NOTE

In this Recommendation, the expression "Administration" is used for conciseness to indicate both a telecommunication administration and a recognized operating agency.

Compliance with this Recommendation is voluntary. However, the Recommendation may contain certain mandatory provisions (to ensure e.g. interoperability or applicability) and compliance with the Recommendation is achieved when all of these mandatory provisions are met. The words "shall" or some other obligatory language such as "must" and the negative equivalents are used to express requirements. The use of such words does not suggest that compliance with the Recommendation is required of any party.

INTELLECTUAL PROPERTY RIGHTS

ITU draws attention to the possibility that the practice or implementation of this Recommendation may involve the use of a claimed Intellectual Property Right. ITU takes no position concerning the evidence, validity or applicability of claimed Intellectual Property Rights, whether asserted by ITU members or others outside of the Recommendation development process.

As of the date of approval of this Recommendation, ITU had received notice of intellectual property, protected by patents, which may be required to implement this Recommendation. However, implementors are cautioned that this may not represent the latest information and are therefore strongly urged to consult the TSB patent database.

© ITU 2005

All rights reserved. No part of this publication may be reproduced, by any means whatsoever, without the prior written permission of ITU.

CONTENTS

Page

1	Scope	1
2	References.....	1
	2.1 Normative references.....	1
	2.2 Informative references.....	2
3	Definitions	3
4	Abbreviations and acronyms	3
5	FAX/Textphone/Modem Tones Detection package	4
	5.1 Properties.....	4
	5.2 Events	4
	5.3 Signals	5
	5.4 Statistics.....	5
	5.5 Procedures	5
6	Text Conversation package.....	5
	6.1 Properties.....	5
	6.2 Events	8
	6.3 Signals	8
	6.4 Statistics.....	8
	6.5 Procedures	9
7	Text Telephone package	10
	7.1 Properties.....	12
	7.2 Events	15
	7.3 Signals	16
	7.4 Statistics.....	16
	7.5 Procedures	16
8	Call Type Discrimination package	18
	8.1 Properties.....	19
	8.2 Events	22
	8.3 Signals	25
	8.4 Statistics.....	29
	8.5 Procedures	29
9	Fax package	32
	9.1 Properties.....	32
	9.2 Events	33
	9.3 Signals	34
	9.4 Statistics.....	34
	9.5 Procedures	35

	Page
10 IP Fax package.....	35
10.1 Properties.....	36
10.2 Events	38
10.3 Signals	39
10.4 Statistics.....	39
10.5 Procedures	39
Appendix I – Call discrimination flows.....	41

ITU-T Recommendation H.248.2

Gateway control protocol: Facsimile, text conversation and call discrimination packages

1 Scope

This Recommendation describes packages for the H.248.1 gateway protocol related to data or telematic services. With terminations implementing these packages, a gateway is expected to handle initial modem negotiations, and the communication in voice, fax and text telephone call types. It contains:

- Package "ftmd" for general detection of signals on a fixed telephone line indicating a possible request to enter some data-related mode;
- Package "ctyp" for general call discrimination to sort out if a call should be handled as voice, fax, text telephone or modem data, and perform the initial negotiation;
- Package "txp" for communicating with text telephones in the telephone network;
- Package "fax" for communication with facsimile in the telephone network;
- Package "txc" for general text conversation in other environments;
- Package "ipfax" for fax transmission in IP networks.

2 References

2.1 Normative references

The following ITU-T Recommendations and other references contain provisions which, through reference in this text, constitute provisions of this Recommendation. At the time of publication, the editions indicated were valid. All Recommendations and other references are subject to revision; users of this Recommendation are therefore encouraged to investigate the possibility of applying the most recent edition of the Recommendations and other references listed below. A list of the currently valid ITU-T Recommendations is regularly published. The reference to a document within this Recommendation does not give it, as a stand-alone document, the status of a Recommendation.

- ITU-T Recommendation H.323 (2003), *Packet-based multimedia communications systems*.
- ITU-T Recommendation T.30 (2003), *Procedures for document facsimile transmission in the general switched telephone network*, plus Erratum 1 (2004).
- ITU-T Recommendation T.37 (1998), *Procedures for the transfer of facsimile data via store-and-forward on the Internet*, plus Amendments 1 (1999), 2 (2001) and 3 (2002).
- ITU-T Recommendation T.38 (2004), *Procedures for real-time Group 3 facsimile communication over IP networks*.
- ITU-T Recommendation T.50 (1992), *International Reference Alphabet (IRA) (Formerly International Alphabet No. 5 or IA5) – Information technology – 7-bit coded character set for information interchange*.
- ITU-T Recommendation T.134 (1998), *Text chat application entity*.
- ITU-T Recommendation T.140 (1998)/Add. 1 (2000), *Protocol for multimedia application text conversation*.
- ITU-T Recommendation V.8 (2000), *Procedures for starting sessions of data transmission over the public switched telephone network*.

- ITU-T Recommendation V.8 bis (2000), *Procedures for the identification and selection of common modes of operation between data circuit-terminating equipments (DCEs) and between data terminal equipments (DTEs) over the public switched telephone network and on leased point-to-point telephone-type circuits.*
- ITU-T Recommendation V.17 (1991), *A 2-wire modem for facsimile applications with rates up to 14 400 bit/s*, plus Corrigendum 1 (1998).
- ITU-T Recommendation V.18 (2000), *Operational and interworking requirements for DCEs operating in the text telephone mode*, plus Amendment 1 (2002).
- ITU-T Recommendation V.21 (1988), *300 bits per second duplex modem standardized for use in the general switched telephone network.*
- ITU-T Recommendation V.23 (1988), *600/1200-baud modem standardized for use in the general switched telephone network.*
- ITU-T Recommendation V.25 (1996), *Automatic answering equipment and general procedures for automatic calling equipment on the general switched telephone network including procedures for disabling of echo control devices for both manually and automatically established calls*, plus Corrigendum 1 (2001).
- ITU-T Recommendation V.27 ter (1988), *4800/2400 bits per second modem standardized for use in the general switched telephone network.*
- ITU-T Recommendation V.34 (1998), *A modem operating at signalling rates of up to 33 600 bit/s for use on the general switched telephone network and on leased point-to-point 2-wire telephone-type circuits.*
- ITU-T Recommendation V.61 (1996), *A simultaneous voice plus data modem, operating at a voice plus data signalling rate of 4800 bit/s, with optional automatic switching to data-only signalling rates of up to 14 400 bit/s, for use on the General Switched Telephone Network and on leased point-to-point 2-wire telephone type circuits.*
- ITU-T Recommendation V.90 (1998), *A digital modem and analogue modem pair for use on the Public Switched Telephone Network (PSTN) at data signalling rates of up to 56 000 bit/s downstream and up to 33 600 bit/s upstream.*
- IETF RFC 2793 (2000), *RTP Payload for Text Conversation.*
- IETF RFC 3550 (2003), *RTP: A Transport Protocol for Real-Time Applications.*
- ISO/IEC 10646-1:2000, *Information technology – Universal Multiple-Octet Coded Character Set (UCS) – Part 1: Architecture and Basic Multilingual Plane.*

2.2 Informative references

- IETF RFC 2301 (1998), *File Format for Internet Fax.*
- IETF RFC 2305 (1998), *A Simple Mode of Facsimile Using Internet Mail.*
- IETF RFC 2530 (1999), *Indicating Supported Media Features Using Extensions to DSN and MDN.*
- IETF RFC 2532 (1999), *Extended Facsimile Using Internet Mail.*
- IETF RFC 2879 (2000), *Content Feature Schema for Internet Fax (V2).*
- IETF RFC 3191 (2001), *Minimal GSTN address format in Internet Mail.*
- IETF RFC 3192 (2001), *Minimal FAX address format in Internet Mail.*

- IETF RFC 3302 (2002), *Tag Image File Format (TIFF) – image/tiff MIME Sub-type Registration*.
- 3GPP TS 26.226 (2000), *3GPP cellular text telephone modem; General description*.

3 Definitions

This Recommendation defines the following terms:

3.1 hexadecimal octet coding: Hexadecimal octet coding is a means for representing a string of octets as a string of hexadecimal digits, with two digits representing each octet.

Each octet is issued by the DTE or DCE in the same time sequence as transmitted on the GSTN line, with no intervening characters.

For each octet, the 8-bit sequence is encoded as two hexadecimal digits. Bit 0 is the first transmitted; bit 7 is the last.

Bits 7-4 are encoded as the first hexadecimal digit, with bit 7 as MSB and bit 4 as LSB. Bits 3-0 are encoded as the second hexadecimal digit, with bit 3 as MSB and bit 0 as LSB.

Examples:

Octet bit pattern (time order as specified in ITU-T Recs V.8 and V.8 bis)	Hexadecimal coding	T.50 codes
00011011	D8	4/4, 3/8
11100100	27	3/2, 3/7
1000011 10100010 11001000 00001001	C1451390	4/3, 3/1, 3/4, 3/5, 3/1, 3/3, 3/9, 3/0

3.2 hexadecimal octet sequence: A hexadecimal octet sequence is an even number of hexadecimal digits, terminated by a <CR> (T.50 0/13) character.

4 Abbreviations and acronyms

This Recommendation uses the following abbreviations:

CR	Carriage Return
DCE	Data Circuit-terminating Equipment
DTE	Data Terminal Equipment
DTMF	Dual Tone Multi Frequency
EDT	European Deaf Telephone
FAX	Facsimile
FCS	Frame Check Sequence
GSTN	General Switched Telephone Network
ID	Identity
IETF	Internet Engineering Task Force
IP	Internet Protocol
ISDN	Integrated Services Digital Network
ISO	International Organization for Standardization
LSB	Least Significant Bit

MG	Media Gateway
MGC	Media Gateway Controller
MIME	Multipurpose Internet Mail Extension
MSB	Most Significant Bit
PSTN	Public Switched Telephone Network
RTP	Real-time Transfer Protocol
SDP	Session Description Protocol
SIP	Session Initiation Protocol
TCP	Transmission Control Protocol

5 FAX/Textphone/Modem Tones Detection package

Package Name: FAX/Textphone/Modem Tones Detection package

Package ID: ftmd (0x000E)

Description: This package defines an event to detect the presence of data traffic (fax, textphone or modem) on a line. The main intention of this event may be used to effect the compression option on the line so that an audio codec capable of transmitting modem signals can be invoked to handle the connection when needed. This Package extends the possible values of tone id in the "start tone detected" event. Note that there is no discrimination between tones from this package. If discrimination is desired, the Call Type Discrimination package should be invoked.

Version: 1

Extends: tonedet version 1

5.1 Properties

None.

5.2 Events

Events are defined as for the tone detection package.

5.2.1 Additional tone id value

Tone Id: dtfm (0x0039)

This tone id is generated when any of the following tones are detected.

"Tone"	Description	Applicable to
CNG	a T.30 fax calling	Fax
V21flag	a V21 tone and flags	Fax
CIV18	a V.8 CI with V.18 call function	Textphone
XCI	a V.18 XCI	Textphone
V18txp	a V.18 "txp"	Textphone
Belltone	a Bell 103 carrier, either the high or the low frequency channel (as defined in ITU-T Rec. V.18)	Textphone
Baudot	a Baudot initial tone and character (as defined in ITU-T Rec. V.18)	Textphone

"Tone"	Description	Applicable to
Edt	an EDT initial tone and character (as defined in ITU-T Rec. V.18)	Textphone
Ctm	a CTM signal was detected (as defined in 3GPP TS 26.226)	Textphone
Cldata	a V.8 CI with any data call function	Data
CT	a V.25 calling tone	Text and data
Cifax	a V.8 CI with facsimile call function	Fax
V21tone	a V.21 carrier, either the high or the low frequency channel	Text and data
V23tone	a V.23 carrier, either the high or the low frequency channel	Text and data
V8 <i>bis</i>	a V.8 <i>bis</i> modem handshaking signal	Fax, text and data
ANS	V.25 ANS, equivalent to T.30 CED from answering terminal	Fax, text and data
ANSAM	V.8 ANSam	Fax, text and data

5.3 Signals

None.

5.4 Statistics

None.

5.5 Procedures

None.

6 Text Conversation package

Package Name: Text Conversation

Package ID: txc (0x00F)

Description: The Text Conversation package is intended for enabling real-time text conversation between terminals in different networks or multimedia environments. This package includes the mechanisms needed to transport T.140 text conversation streams in multimedia environments. The transport mechanism will be different for each environment where the package is used.

Version: 1

Extends: None

6.1 Properties

6.1.1 Text Buffering Time

Property Name: Text Buffering Time

Property ID: bufftime (0x0001)

Description: This property indicates the time in ms that T.140 data shall be collected before transmission in order to minimize text overhead. In low bit rate IP networks, a value of 300 ms is recommended. In environments with low overhead or high bit rates, this property should have the value 0, enabling immediate transmission of entered characters.

Type: Integer

Possible values: 0-500

Default: Provisioned
Defined in: LocalControl
Characteristics: Read/Write

6.1.2 Text Termination Connection State

Property Name: Text Termination Connection State
Property ID: connstate (0x0002)
Description: The connection state property is used to register text capability, request a text connection, and reflect details of the achieved text connection. For transport methods having separate channel control procedures, managed by the MGC, only a subset of the values is used: Idle, Prepare, Connected.
Type: Enumeration
Possible values: Idle (0x0001) For no connection efforts
Prepare (0x0002) For being known in the termination and ready to accept (the text capability is offered in session requests)
Initiate (0x0003) For taking the initiative to establish a text connection opening a text channel
Accept (0x0004) For accepting an incoming request for a text session
Deny (0x0005) For denying an incoming text connect request
Connected (0x0006) For established connection in text mode
Default: Idle (0x0001)
Defined in: TerminationState
Characteristics: Read/Write

6.1.3 Text User Identity

Property Name: Text User Identity
Property ID: txuserid (0x0003)
Description: This parameter holds the optional remote User Identity parameter of a T.140 text conversation session, retrieved from the session.
Type: String
Possible values: String of up to 64 characters in Unicode UTF-8
Default: None
Defined in: LocalControl
Characteristics: Read/Write

6.1.4 Text Transport

Property Name: Text Transport
Property ID: trpt (0x0004)
Description: The Transport parameter reflects the transport mechanism selected for the Text Conversation termination. When the media description has the full capability of describing sessions including the transport mechanism, this parameter is implied by the media descriptor.
Type: Enumeration

Possible values: H224 (0x0001) For H.224 Client ID = 2 in H.320
 AL1 (0x0002) For AL1 in H.324
 TCP (0x0003) For TCP as in Annex G/H.323
 RTP/T.140 (0x0004) For RTP with T.140 as in Annex G/H.323 or IETF SIP
 RTP/RED/T.140 (0x0005) For RTP with T.140 and redundancy coding RED as in Annex G/H.323 or IETF SIP
 T.134 (0x0006) For T.134 in the T.120 environment
 Unassigned (0x0007) When no transport protocol is assigned

Default: Unassigned (0x0007)

Defined in: LocalControl

Characteristics: Read/Write

6.1.5 Text Protocol Version

Property Name: Text Protocol Version

Property ID: TextProto (0x0005)

Description: The version of the T.140 protocol used in the connection.

Type: Integer

Possible values: Any integer corresponding to a T.140 version number. (Currently 1.)

Default: 1

Defined in: LocalControl

Characteristics: Read/Write

6.1.6 Redundancy Level

Property Name: Redundancy Level

Property ID: red (0x0006)

Description: The number of generations to use in RTP redundancy coding including the Primary.

Type: Integer

Possible values: 0-6
 0 = use default or automatic decision on redundancy level
 1 = use no redundancy
 2-6 = use specified number of generations of data

Default: 0

Defined in: LocalControl

Characteristics: Read/Write

6.1.7 Txc Request Timer

Property Name: Txc Request Timer

Property ID: txctim (0x0007)

Description: The txctim property is a timer value in tenths of seconds for the requested operation. If the requested operation is not completed within this time, the state is returned to Idle and the result reported in the connchange event. An initial timer value of 0 indicates that no timer control is requested.

Type: integer
Possible values: 0-6000
Default: 0
Defined in: LocalControl
Characteristics: Read/Write

6.2 Events

6.2.1 Connection State Change

Event Name: Connection State Change
Event ID: connchange (0x0001)
Description: This event will occur when the text connection state for the termination has changed. Its parameter is the new contents of the Connection State property. If a request timed out, the state is returned to Idle.

6.2.1.1 EventDescriptor parameters

None.

6.2.1.2 ObservedEventDescriptor parameters

6.2.1.2.1 Connection Change

Parameter Name: Connection Change
Parameter ID: connchnng (0x0001)
Description: Indicates the current connection state
Type: Enumeration
Optional: No
Possible value: As property txc/connstate
Default: None

6.3 Signals

None.

6.4 Statistics

6.4.1 Characters Transferred

Statistic Name: Characters Transferred
Statistics ID: chartrans (0x0001)
Description: Number of bytes of T.140 data transferred through the termination
Type: Integer
Possible values: 0 and up
Level: Termination

6.4.2 Packets Lost

Statistic Name:	Packets Lost
Statistics ID:	packlost (0x0002)
Description:	Number of T.140 packets lost as counted by the receiving T.140 termination
Type:	integer
Possible values:	0 and up
Level:	Termination

6.5 Procedures

The following are standard transport mechanisms for text conversation in different environments.

- In H.320: H.224 with Client ID = 2;
- In H.324: AL1 channel connected with H.245 procedures;
- In T.120: T.134 transport in T.125 communication channel environment;
- In H.323: RTP/T.140 or TCP as selected with H.245 messages;
- In IETF SIP: RTP/T.140 as initiated with SDP.

NOTE – T.140 text media is also used together with V.18 modems for text telephony; this is specified in a separate package: Text_Telephone (txp).

The Text Conversation package is intended to be added to a multimedia termination, handling appropriate multiplexing and control.

6.5.1 Function

A termination with Text Conversation adds capability declaration for a text conversation channel in the call set-up according to procedures defined for each environment. When matching capabilities exist, a T.140 channel can be established according to the transport protocol used in the current environment. T.140 text stream contents received from one termination are transferred for transmission to other T.140 capable terminations in the context. The T.140 contents may be buffered for a short moment for possible collection of more text in the same transmission according to the buffer time property.

6.5.2 Informative description

Real-time text conversation allows telecom users to carry out a written conversation. The presentation and coding aspects of standardized text conversation are defined in ITU-T Rec. T.140. Text is transmitted character by character (or in small blocks) so that the users experience a close interaction. The text and basic editing control is ISO/IEC 10646-1, UTF-8 coded. Figure 1 gives an example of how a text conversation can be displayed to the user.

ANNE	EVE
Hi, this is Anne.	Oh, hello Anne, I am glad you are calling! It's been long since we met!
Yes, have you heard that I will come to Paris in November?	No, that's new to me. What brings you here?

Figure 1/H.248.2 – Possible display of a one-to-one text conversation

For each transport environment, a suitable transport protocol must be selected to carry the text. Currently defined and recommended transport environments for T.140 text media streams that can be supported by this package are:

- 1) packet networks, where the procedures described in Annex G/H.323 can be used for setting up and conducting text conversation sessions, using TCP or RTP/T.140 for the transport of T.140;
- 2) packet networks, where the IETF Session Initiation Protocol (SIP) can be used for setting up and conducting text conversation sessions using RTP/T.140 for the transport of T.140;
- 3) the H.324 multimedia environment in PSTN, ISDN and Mobile networks, where an AL1 channel connected by H.245 procedures is used for T.140;
- 4) the H.320 multimedia environment, where a H.224 channel with Client ID = 2 is specified for transport of T.140;
- 5) the T.120 data conferencing environment, that can be used alone, or in conjunction with any of the environments above, where T.134 specifies the application entity and T.125 the data channel for T.140.

A separate Text Telephone package (txp) supports text telephony in the PSTN using the V.18 modem in native and legacy modes, and T.140 for communication with terminations using this package.

Interworking between these forms of Text Conversation can be achieved through the use of gateways with packages defined here.

6.5.3 Total Conversation

Most text conversation transport environments are part of multimedia communication systems. With the introduction of text, they enable conversation in video, text and voice simultaneously, called Total Conversation. The total set of communication modes that people tend to use locally can be offered on a distance through Total Conversation. Since the text part is built on the unified presentation level T.140, the task to arrange interoperability of Total Conversation in different network environments through a gateway is simplified.

Video is optional in the multimedia systems. Therefore, compatible text-and-voice conversation can also be established within the same framework.

6.5.4 Descriptor to use for text conversation

One descriptor value is of specific interest for the Text Conversation and Text Telephone packages. That is the text conversation media stream. It is described here for information.

Text conversation stream

This descriptor is used for the text conversation stream, according to ITU-T Rec. T.140. T.140 gives a general presentation level description for a termination supporting real-time text conversation. The text and basic editing control is UTF-8 coded. For each transport environment, a suitable transport protocol must be selected to carry the text.

T.140 is a registered MIME text stream name, which can be specified to be used as it is or in RTP embedding of IETF RFC 2793.

7 Text Telephone package

Package Name: Text Telephone package

Package ID: txp (0x0010)

Description: The Text Telephone package is used on a line termination in a Media Gateway, to handle text telephone calls. It includes V.18 text telephone modem functionality that adapts to different legacy text telephone systems in the PSTN as well as it provides communication with V.18-equipped text telephones. The text media stream is UTF-8 coded with a few editing functions as specified in ITU-T Rec. T.140. The Text Telephone package is intended to be operated together with the Call Type Discrimination package (ctyp) to perform V.18 automoding functions.

Version: 1

Extends: None

Text Telephony

Text Telephony offers a real-time conversation in text between two parties. It may be combined with voice conversation. Text telephony in PSTN existed in at least six incompatible legacy modes before the automoding modem Recommendation for text telephony V.18 was introduced by ITU-T Rec. V.18. It is suitable for use in PSTN text telephones, as well as in gateways for connection to the PSTN text telephones. When connected, it can operate in one of its native V.18 modes, or in any of the six legacy modes described in V.18 annexes. The legacy modes are Baudot, EDT, DTMF, V.21, Minitel and Bell 103. The mode detection and adjustment of the transmission to the selected mode is automatic.

The native modes use ITU-T Rec. T.140 for the text coding and control and ITU-T Rec. V.21 or optionally ITU-T Rec. V.61 for the modulation. The legacy modes use different character coding schemes, but when used in a gateway, the text stream to and from the textphone termination is T.140 coded for all modes. The text telephone package described here includes character conversion, filtering and other adaptation needed for conversation with the legacy mode text telephones.

Carrier modes and carrierless modes

Three of the legacy textphone modes are carrierless. This means that they do not send any signal at all when there are no characters to transmit. Three legacy modes and the native V.18 modes use a carrier tone transmitted as long as the connection is maintained. If the carrier stops, it is detected but the line is not disconnected because this is normal behaviour when transferring call or when alternating between voice and text usage.

Text Telephone Package considerations above the V.18 modem level

ITU-T Rec. V.18 only specifies an automoding modem and the requirement to use T.140 when V.18 native mode is achieved in a connection. When used in a gateway, there are some general issues that must be handled above the V.18 level.

Character set

The legacy modes have limited character sets. For all legacy modes, appropriate character conversion, filtering and control interception are included in the package functionality, so that the communication with other T.140 text terminations in the context is equalized to a T.140 text stream.

Embedded termination functionality

There is no need to open all details of the use of V.18 and T.140 to be accessible from the MGC in a gateway. V.18, T.140, character conversion methods and other automated methods are therefore combined in the Text Telephone package that can be added to suitable terminations of a gateway. Figure 2 describes the Text Telephone package components.

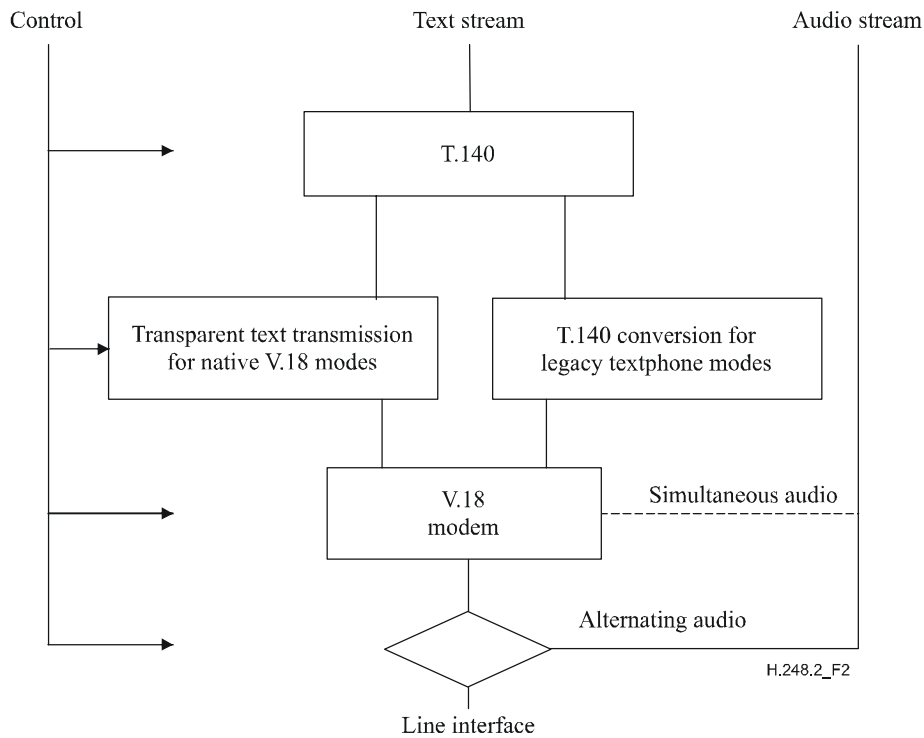


Figure 2/H.248.2 – Text Telephone package functional view

7.1 Properties

7.1.1 Conversation mode

Property Name: Conversation mode

Property ID: convmode (0x0001)

Description: The behaviour of the termination is influenced by this property. By setting the property to a selection of the possible values, the number of ways that the conversation can be conducted can be defined. After connection the property contains the actual conversation mode used in the call.

The basic text-only mode shall always be supported.

The alternating text and voice mode is most often used to enable one user to speak and read and the other to listen and type. It is used because there was no technology support for simultaneous voice and text when text telephony was introduced. It is only supported for compatibility with the legacy mode text telephone habits.

The simultaneous text and voice mode enables the users to communicate in any combination and order of the two media. No legacy mode terminals operate in this mode. V.18-equipped terminals with V.61 modulation can operate in this mode.

Type: Sub-list of Enumeration

Possible values: Text-only (0x0001) Basic text-only mode, not possible to combine with voice
 Alternating (0x0002) Text and voice may be alternating
 Simultaneous (0x0003) Simultaneous text and voice mode

Default: Provisioned

Defined in: Termination state

Characteristics: Read/Write

7.1.2 Communication Mode

Property Name: Communication Mode

Property ID: commode (0x0002)

Description: This property indicates what modulation and mode the V.18 modem is operating in, reflecting what type of text telephone it is in connection with. For an explanation of the different modes, see ITU-T Rec. V.18.

If a specific mode of operation is wanted, this property is set before the text connection is made.

Normally it is set with the outcome of the V.18 automodring procedure performed with the Call Type Discrimination package.

When a legacy mode textphone signal is detected by the Call Type Discrimination package, the connection result is only reported, but V.18 does not transmit any signal until ordered to do so by setting this property or when probing is invoked.

Type: Enumeration

Possible values:

V18-V21Hi	(0x0001)	Native V.18 mode transmitting on the high channel for text only or text and voice alternatively
V18-V21Lo	(0x0002)	Native V.18 mode transmitting on the low channel for text only or text and voice alternatively
V18-V61C	(0x0003)	Native V.18 mode for text and voice simultaneously, transmitting in the caller's channel
V18-V61A	(0x0004)	Native V.18 mode for text and voice simultaneously, transmitting in the answering part's channel
V21Hi	(0x0005)	Legacy V.21 mode transmitting on the high channel
V21Lo	(0x0006)	Legacy V.21 mode transmitting on the low channel
DTMF	(0x0007)	DTMF text telephone mode
EDT	(0x0008)	EDT ("European Deaf Telephone")
Baudot 45	(0x0009)	Baudot 45.45 bit/s
Baudot 47	(0x000A)	Baudot undetermined bit rate
Baudot 50	(0x000B)	Baudot 50 bit/s
V23Hi	(0x000C)	V.23 modulation and Minitel coding transmitting on the high channel
V23Lo	(0x000D)	V.23 modulation and Minitel coding, transmitting on the low channel
BellHi	(0x000E)	Bell 103, transmitting on the high channel
BellLo	(0x000F)	Bell 103, transmitting on the low channel
None	(0x0010)	No mode achieved

Default: "None" (0x0010)

Defined in: LocalControl

Characteristics: Read/Write

7.1.3 Connection Mode

Property Name: Connection Mode

Property ID: connmode (0x0003)

Description: This property indicates in what connection phase and mode the V.18 modem is operating. A connection effort is initiated by setting this property to connecting, with the desired mode in the Communication Mode property.

A V.18 modem can be controlled to operate in one of a set of modes for seeking contact with a counterpart. The modes available are listed as values of this property. Determination of the mode is made by the ctyp package, possibly combined with the probing action of that package.

Once connected, the termination operates in the selected mode until the text connection is lost or it is ordered to disconnect. If text connection is lost for a certain time, the automoding procedure can be restarted through the ctyp package, or the modem can stay in the achieved mode trying to reconnect.

The ctyp package may be used on a connected voice line to detect if the remote user wants to enter text mode. It must be noted that for some of the legacy modes (EDT, DTMF and Baudot), the user has to push some keys on the textphone to make the connection when V.18 is set in the automode monitor mode. This is slightly unusual for a textphone user, who normally waits for the answering side to start the conversation. Therefore, the explicit automoding modes should be used when possible, probing as answering and sending V.18 signals as calling.

If a connection request fails, the property returns to Idle state. If the connection request succeeds, the property changes value to Connected.

Type: Enumeration

Possible values:

Idle	(0x0001)	No connection established and no efforts to connect
Connecting	(0x0002)	For request of the native or legacy mode indicated in the Communication Mode property
Connected	(0x0003)	Connection established in one of the communication modes

Default: Idle (0x0001)

Defined in: Termination State

Characteristics: Read/Write

7.1.4 Action at Loss of Connection

Property Name: Action at Loss of Connection

Property ID: lossconnection (0x0006)

Description: This property tells how the V.18 modem handles loss of text connection. When "Keep" is selected, the conversation is optimized for the alternating text-voice mode. When "Return" is selected, the communication is optimized for call forwarding between different types of text telephones. For that case, ctyp must be invoked for reconnection.

Type: Enumeration

Possible values:

Keep	(0x0001)	Keep selected communication mode
Return	(0x0002)	Return to automoding

Default: Provisioned

Defined in: Termination State

Characteristics: Read/Write

7.1.5 V18 Options

Property Name:	V18 Options
Property ID:	v18opt (0x0007)
Description:	This property indicates what optional capabilities the V.18 modem implementation has and is allowed to use.
Type:	Sub-list of Enumeration
Possible values:	V.61 capability (0x0001) Indicates the ability to use V.61 modulation
Default:	None
Defined in:	Termination state
Characteristics:	Read/Write

7.1.6 Character Set

Property Name:	Character Set
Property ID:	charset (0x0008)
Description:	<p>The legacy modes have limited character sets. For all legacy modes, appropriate character conversion, filtering and control interception is included in the package functionality, so that the communication with other T.140 text terminations in the context is equalized to a T.140 text stream. For a user-friendly conversion of received national characters in the limited character sets to ISO/IEC 10646-1 used in T.140, there is a need to specify what national translation table to use. This is valid for EDT, DTMF, V.21 and Baudot modes. The character set parameter is the registered ISO code for the national variant of the T.50 character set used. Default is:</p> <ul style="list-style-type: none">– German for EDT;– Danish for DTMF (suitable also for the Netherlands);– Swedish/Finnish for V.21 (suitable also for the United Kingdom);– International Reference Version for Baudot. <p>Example: In Norway, the letter "Æ" (A and E together) is used in the same location of the 7-bit character table as used for letter "Ä" (A with umlaut) in Finland and Sweden. The international reference version has the character "[" (left bracket) in the same position. In T.140, these characters have unique positions.</p>
Type:	String
Possible values:	ISO registered name for a character set
Default:	Provisioned
Defined in:	Termination State
Characteristics:	Read/Write

7.2 Events

7.2.1 Connection Mode Changed

Event Name:	Connection Mode Changed
Event ID:	connchnng (0x0001)

Description: This event reports the change of communication mode, as a result of a connection effort, or a disconnection.

7.2.1.1 EventDescriptor parameters

None.

7.2.1.2 ObservedEventDescriptor parameters

Same as the property txp/commode.

7.3 Signals

None.

7.4 Statistics

7.4.1 Number of Characters Transferred

Statistic Name: Number of Characters Transferred

Statistics ID: chartrans (0x0001)

Description: Number of bytes of T.140 data transferred (sent and received)

Type: Integer

Possible values: 0 or more characters

Level: Termination

7.4.2 Number of Alternating Turns

Statistic Name: Number of Alternating Turns

Statistics ID: altturns (0x0002)

Description: Number of alternating turns when using alternating conversation mode

Type: Integer

Possible values: 0 or more turns

Level: Termination

7.5 Procedures

7.5.1 Basic operation

After line connection, the termination where the Text Telephone package is implemented should be requested to try a text telephone connection using the functionality of the Call Type Discrimination package for the modem signalling according to ITU-T Rec. V.18 in a selected mode. Once the connection is established, the Text Telephone package is used for the text communication in the established mode.

After connection in text mode, the result is a gateway context with one textphone termination and one voice line termination connected to the same line. In the same context, the normal case is to have other terminations with audio and text conversation media.

In the simplest text-only case, the audio streams are not used and may be released.

Text received through the V.18 modem is converted if necessary to T.140. It is embedded in the RTP/T.140 format according to the rules in ITU-T Rec. T.140 and IETF RFC 2793, specifying RTP/T.140. Text received from other text conversation terminations is transmitted through the text telephone termination after extraction from the RTP packets. This process continues until any end disconnects.

7.5.2 Informative description

Descriptors to use for text telephony:

Two descriptor values are of specific interest for the Text Telephone package. These are: the text conversation media stream, and the V.18 modem. The text conversation media stream is described in the Text Conversation package. The V.18 modem descriptor is described in 7.5.3 for information.

7.5.3 V.18 modem

Modem Name: V18.

This modem type is intended for communication with text telephones in the PSTN. Its operational modes are implemented in the textphone package. The logic for setting and detecting the mode according to ITU-T Rec. V.18 is handled by the ctyp package. Some properties of the Text Telephone package and the Call Type Discrimination package directly reflect parameters for control of the V.18 modem. V.18 modem implementations may have different capabilities reflected in the property values.

A V.18 modem may be operated in automode monitor mode, when it listens on a voice line for text telephone signals. This mode can be used to detect that the user wishes to transit from voice to text during a voice call. That is done entirely with the ctyp package.

Alternatively, a V.18 modem may be operated in modes where it actively tries to establish a text telephone connection. The procedure includes transmission of text telephone-specific signals on the line. For calling modems, it is done by the CI signal in the ctyp package. For an answering modem, it is done with the ctyp package combined with probing from the textphone package by setting the commode property to the probing mode.

When the mode is discriminated, the commode property should be set to request communication in that mode.

After successful connection in a text telephone mode, the text session is conducted in the specific mode as controlled with the commode property, and the text stream is made available in T.140 format for other text terminations in the context.

The Text Telephone package only contains the text connection and text media aspects of the termination. It is supposed to be combined with appropriate call control packages, line interface packages and voice channel packages.

7.5.4 Operation with alternating text and voice mode

If the involved gateways have the alternating text and voice capability, the following procedure can be applied to give the users a possibility to go back and forth between using text and voice. Between the terminals in the context, two streams are members of the context during the call, the text stream and the audio stream. The procedure is slightly dependent on the terminal type as described in the following clause.

7.5.5 Alternating text and voice mode with legacy, carrierless textphones

For the carrierless types Baudot, DTMF and EDT the following way to operate should be used: When V.18 detects text, the textphone termination stops feeding the audio stream into the audio stream of the context, and instead inserts the detected and T.140 converted characters into the text stream. This mode is continued as long as characters keep coming from the PSTN textphone.

When no more characters arrive, and no textphone signal is received within 1 second, the audio channel is again fed to the Audio-stream channel. If new text comes from the V.18 side, the process is repeated.

It is important that the implementation of V.18 can retrieve characters from the first detected text telephone signals after each mode shift. The leading tones before the characters can be as short as 150 ms.

If text is received from the context through the Text stream when V.18 is not actively receiving text, the voice path is muted, and the characters are sent to the V.18 modem for transmission. When all text is transmitted and no more is received for two seconds, the audio channels are enabled again.

Since the carrierless systems are one-way alternate transmission systems, transmission of characters is possible only in one direction at a time. Once started, reception is given priority.

In the Context, two-way simultaneous transmission is possible. Therefore, characters received from the context while V.18 is busy receiving should be buffered (up to a reasonable limit).

After the initial connections, all these actions are automatic and are handled within the textphone termination.

7.5.6 Alternating voice and text conversation in carrier mode

After a carrier mode text connection is established, loss of carrier can be taken as the indication that the audio stream shall be connected with audio interface of the line. When the remote end is a V.21, Bell or V.18 device, the text communication can be full duplex, so the gateway can just let the text streams flow between the terminations.

When carrier reappears, or text is received through the text system, the audio stream shall be muted, and text transmission noted.

Minitel does not support any voice interworking mode.

7.5.7 Simultaneous voice and text mode

In case the simultaneous voice and text method is enabled, the handling of the voice and text channels is trivial. Once connected, the text stream can stay connected with the remote text stream all the time to serve a two-way simultaneous text conversation, and the audio channel can be connected with the remote audio stream to support a two-way simultaneous audio channel. This mode can be supported by V.18 with V.61 modulation.

8 Call Type Discrimination package

Package Name: Call Type Discrimination Package

Package ID: ctyp (0x0011)

Description: This package monitors the termination for signals indicating presence of a T.30 telefax terminal, a V.18 or legacy mode text telephone or data modem. In cooperation with the MGC and the remote MG or endpoint, it can perform exchange of signals until the call type is determined and an appropriate mode for the call can be established.

The package contains modem negotiation functions of ITU-T Recs V.25, V.8, V.8 *bis*, V.18 and T.30.

Version: 2

Extends: None

8.1 Properties

8.1.1 Call Types

Property Name: Call Types
Property ID: calltyp (0x0001)
Description: The Call Types property selects the types of calls for which the termination is monitored. Note that the connection is, by default, regarded to be capable of handling audio and therefore no specific value is included for that.
Type: Sub-list of Enumeration
Possible values: FAX (0x0001)
TEXT (0x0002)
DATA (0x0003)
Default: None
Defined in: Termination State
Characteristics: Read/Write

8.1.2 Text Call Types

Property Name: Text Call Types
Property ID: ttyp (0x0002)
Description: This parameter indicates for what text telephone modes the termination is monitored, used in TEXT mode.
Type: Sub-list of Enumeration
Possible values: V21 (0x0001)
DTMF (0x0002)
Baudot45 (0x0003)
Baudot50 (0x0004)
Bell (0x0005)
EDT (0x0006)
Minitel (0x0007)
V18 (0x0008)
CTM (0x0009)
Default: None
Defined in: Termination State
Characteristics: Read/Write

8.1.3 V8bis Support

Property Name: V8bis Support
Property ID: v8bsup (0x0003)
Description: Support of the V.8 *bis* modem negotiating procedure is optional. The V8bis support property indicates if V.8 *bis* is supported. It can be used in TEXT, FAX and DATA modes.
Type: Boolean
Possible values: True V.8 bis is supported by the package
False V.8 bis is not supported by the package

Default: Provisioned
Defined in: Termination State
Characteristics: Read

8.1.4 Probe Message

Property Name: Probe Message
Property ID: probemsg (0x0004)

Description: This property holds a short string that the termination transmits as a stimulating probe message for the carrierless communication modes in the answering modes. The far end user will see this message when it is transmitted in the mode matching the counterpart's textphone, and type a response back, enabling the V.18 modem to detect the type of carrierless text telephone in the connection.

When issued, it is automatically followed by "GA" in Baudot probing, and with "+" in EDT and DTMF probing to reflect the turntaking signal habit in the different user communities. The string could be customized to briefly inform the called user about what service that is reached.

Note that the string is not issued in the carrier modes.

Type: String
Possible values: Any string, not more than 20 characters long
Default: Empty String ("")
Defined in: Termination State
Characteristics: Read/Write

8.1.5 Probe Order

Property Name: Probe Order
Property ID: probeorder (0x0005)

Description: This property holds an indication on what modes to probe for, and the order the probes will be transmitted. Probing is a time-consuming procedure and it is important that the most likely modes are probed first. The order to select depends on whether or not any legacy mode textphones are on the market in the area where the gateway is installed. An optimized order can be composed by enumerating the desired specific type indicators. Note that leaving out a type from probing may cause connection problems for connection with textphones of that type.

Type: Sub-List of Enumeration
Possible values: (For recommended orders, see ITU-T Rec. V.18.)

Any combination of none to six of the type indicators:

V21 (0x0001)
DTMF (0x0002)
Baudot (0x0003)
EDT (0x0004)
MINITEL (0x0005)
BELL (0x0006)

in any desired order

Default: Provisioned
Defined in: Termination state
Characteristics: Read/Write

8.1.6 Phase Reversal Detect

Property Name: Phase Reversal Detect

Property ID: phrevdet (0x0006)

Description: This property indicates support of detection of the phase reversals within ANS or ANSam signals. If this property has the value "False", ANS with phase reversals (ANSBAR) will be reported as ANS and ANSam with phase reversals (ANSAMBAR) will be reported as ANSam in the dtone event.

Type: Boolean

Possible values: True Phase reversal detection is supported by the termination.
False Phase reversal detection is not supported by the termination.

Default: Provisioned
Defined in: Termination State
Characteristics: Read

8.1.7 MG Responsible for Call Discrimination Signalling

Property Name: MG Responsible for Call Discrimination Signalling

Property ID: MGCallSig (0x0007)

Description: This property indicates whether the MGC or MG is responsible for initiating the Call Discrimination Signalling.

Type: Boolean

Possible values: True Indicates that the MG is responsible for Call Discrimination Signalling i.e., ANS, ANSam. The signals defined in 7.3 are not sent from the MGC to order messages, the MG autonomously determines when to send the appropriate messages.
False Indicates that the MGC is responsible for initiating Messages for Call Discrimination. The signals defined in 7.3 apply.

Default: Provisioned
Defined in: Termination State
Characteristics: Read/Write

8.2 Events

8.2.1 Discriminating Tone Detected

Event Name: Discriminating Tone Detected

Event ID: dtone (0x0001)

Description: This event indicates that a signal valid for detection and discrimination of mode was detected. The signal name is given as a parameter. Further logic is needed in some cases to discriminate the call type from this information. The *V.8 bis* related parameters are returned only when *V.8 bis* is supported.

Note that some textphones operate with DTMF tones. This package decodes initial DTMF signals according to the specification for text telephones in V.18. DTMF detection may be indicated also from the "dd" package if that is active.

8.2.1.1 EventsDescriptor parameters

None.

8.2.1.2 ObservedEventDescriptor parameters

8.2.1.2.1 Discriminating Tone Type

Parameter Name: Discriminating Tone Type

Parameter ID: dtt (0x0001)

Description: Indicates the call type associated with the discriminating tone.

Type: Enumeration

Optional: No

Possible values: *For FAX*

CNG	(0x0001)	A T.30 fax calling tone
V21flag	(0x0002)	V21 tone and flags for fax answering

For TEXT

XCI	(0x0003)	A V.18 XCI
V18txp1	(0x0004)	A V.18 txp signal in channel V.21(1)
V18txp2	(0x0005)	A V.18 txp signal in channel V.21(2)
BellHi	(0x0006)	A Bell 103 carrier on the high channel
BellLo	(0x0007)	A Bell 103 low channel
Baudot45	(0x0008)	A Baudot45 initial carrier and characters
Baudot50	(0x0009)	A Baudot50 initial carrier and characters
Edt	(0x000A)	An EDT initial tone and characters
DTMF	(0x000B)	DTMF signals
CTM	(0x001C)	CTM signals

For DATA

Sig	(0x000C)	Modulation signal from a mode only used for data, i.e., not V.21, V.23 nor Bell 103
-----	----------	---

Common to TEXT and DATA

CT	(0x000D)	A V.25 calling tone
V21hi	(0x000E)	A V.21 carrier on the higher frequency channel
V21lo	(0x000F)	A V.21 carrier on the low frequency channel
V23hi	(0x0010)	A V.23 high carrier
V23lo	(0x0011)	A V.23 low carrier
CI	(0x0012)	A V.8 CI with contents in "dtvalue"

Common to FAX, TEXT and DATA

ANS	(0x0013)	V.25 ANS, equivalent to T.30 CED from answering terminal
ANSbar	(0x0014)	V.25 ANS with phase reversals
ANSAM	(0x0015)	V.8 ANSam
ANSAMbar	(0x0016)	V.8 ANSam with phase reversals
CM	(0x0017)	V.8 CM with contents in "dtvalue"
CJ	(0x0018)	V.8 CJ
JM	(0x0019)	V.8 JM with contents in "dtvalue"
ENDOSIG	(0x001A)	End of reported signal detected reported for continuous or repeated signals
V8BIS	(0x001B)	V.8 <i>bis</i> signal, with signal type in parameter V8bistype and value in "dtvalue"

Default: None

8.2.1.2.2 Discriminating Tone Value

Parameter Name: Discriminating Tone Value

Parameter ID: dtvalue (0x0002)

Description: Indicates the data (if any) associated with the discriminating call tone.

Type: String

Optional: Yes

Possible values: When used for V.8 and V.8 *bis* related messages, the following coding rules apply:

If a V.8 *bis* message is detected without a preceding V.8 *bis* signal, the preamble is reported as a 0 <signal> value.

The contents of valid V.8 *bis* message(s), if detected, are reported using hexadecimal octet coded string(s) (see 3.1). Flag detection and consumption, flag transparency 0-bit deletion and FCS checking are performed by the MG. The MG shall not report invalid messages (e.g., bad FCS). If two consecutive messages are detected but the first is invalid, the MG shall indicate this with a comma in front of the second message (e.g., <2nd message>). Two concatenated V.8 *bis* messages are reported with two consecutive <message> indications.

Default: None

8.2.1.2.3 V.8bis Type

Parameter Name: V8bis Type

Parameter ID: v8bist (0x0004)

Description: A detected V.8 *bis* signal. V.8 *bis* can be used for all modes.

Type:	Enumeration		
Optional:	Yes		
Possible values:	ESi	(0x0001)	V.8 <i>bis</i> signal ESi
	ESr	(0x0002)	V.8 <i>bis</i> signal ESr
	MRe	(0x0003)	V.8 <i>bis</i> signal MRe
	MRdi	(0x0004)	V.8 <i>bis</i> signal MRd from initiator
	MRdr	(0x0005)	V.8 <i>bis</i> signal MRd from responder
	CRe	(0x0006)	V.8 <i>bis</i> signal CRe
	CRdi	(0x0007)	V.8 <i>bis</i> signal CRd from initiator
	CRdr	(0x0008)	V.8 <i>bis</i> signal CRd from responder
	MS	(0x0009)	V.8 <i>bis</i> message MS with contents in "dtvalue"
	CL	(0x000A)	V.8 <i>bis</i> message CL with contents in "dtvalue"
	CLR	(0x000B)	V.8 <i>bis</i> message CLR with contents in "dtvalue"
	ACK	(0x000C)	V.8 <i>bis</i> message ACK with contents in "dtvalue"
	NAK	(0x000D)	V.8 <i>bis</i> message NAK with contents in "dtvalue"
Default:	None		

8.2.2 Call Type Discrimination Result

Event Name:	Call Type Discrimination Result
Event ID:	calldisres (0x0002)
Description:	This event indicates that the MG has completed the Call Type discrimination process and has determined that a particular call type is supported.

8.2.2.1 EventsDescriptor parameters

None.

8.2.2.2 ObservedEventDescriptor parameters

8.2.2.2.1 Discriminated Call Type

Parameter Name:	Discriminated Call Type		
Parameter ID:	dct (0x0001)		
Type:	Enumeration		
Optional:	No		
Possible values:	Audio	(0x0000)	Default Audio negotiated
	<i>For FAX</i>		
	T30	(0x0001)	For T.30 PSTN sessions without ECM
	T30ECM	(0x0002)	For T.30 PSTN sessions with ECM (non-V.34)
	T30V34	(0x0003)	For T.30 PSTN sessions with V.34 (half-duplex)
	T38UDPTL	(0x0004)	For T.38 using UDPTL
	T38TCP	(0x0005)	For T.38 using TCP
	T37	(0x0006)	For T.37
	FAXAUDIO	(0x0007)	For audio codec (e.g., G.711 over RTP)

For TEXT

V18txp1	(0x0008)	A V.18 txp signal in channel V.21(1)
V18txp2	(0x0009)	A V.18 txp signal in channel V.21(2)
BellHi	(0x000A)	A Bell 103 carrier on the high channel
BellLo	(0x000B)	A Bell 103 low channel
Baudot45	(0x000C)	A Baudot45 initial carrier and characters
Baudot50	(0x000D)	A Baudot50 initial carrier and characters
Edt	(0x000E)	An EDT initial tone and characters
DTMF	(0x000F)	DTMF signals
V21hi	(0x0010)	A V.21 carrier on the higher channel
V21lo	(0x0011)	A V.21 carrier on the low channel
V23hi	(0x0012)	A V.23 high carrier
V23lo	(0x0013)	A V.23 low carrier
CTM	(0x0014)	A CTM signal

For Modem

V8	(0x0015)	A V.8 signal
V8bis	(0x0016)	A V.8 <i>bis</i> signal

Default: Audio (0x0000)

8.3 Signals

8.3.1 V8 Signal

Signal Name: V8 Signal

Signal ID: v8sig (0x0001)

Description: Indicates to the MG the type of V8 Signal to send.

Signal type: TO

Duration: Default provisioned in MG. The MGC may override this default by providing a duration.

8.3.1.1 Additional parameters

8.3.1.1.1 V.8 Signal Type

Parameter Name: V.8 Signal Type

Parameter ID: v8styp (0x0001)

Description: The type of V.8 signal to send.

Type: Enumeration

Optional: Yes

Possible values: CM (0x0001)
CJ (0x0002)
JM (0x0003)
CI (0x0004)
v8nosig (0x0005) Not used (reserved)

NOTE – The normal H.248 signal replacement procedures are used to turn off a signal and shall be used.

Default: Provisioned

8.3.1.1.2 V.8 Signal Contents

Parameter Name: V8Sig Cont

Parameter ID: v8scont (0x0002)

Description: The V.8 signals carry data for call type and modulation modes. These parameters can be supplied through the v8cont parameter. ITU-T Rec. V.8 can be used for FAX, TEXT and DATA modes.

Type: String

Optional: Yes

Possible values: Allowed contents of the signals, coded as hexadecimal octet coded string

Default: Empty String ("")

8.3.1.1.3 V.18 XCI Enable

Parameter Name: V18 XCI Enable

Parameter ID: v18xcien (x0003)

Description: XCI can be sent intermixed with CI transmission as specified in ITU-T Rec. V.18 to stimulate plain Minitel terminals to respond as text telephones. Used in TEXT mode.

Type: Boolean

Optional: Yes

Possible values: True XCI transmission enabled during V.18 CI transmission
False XCI transmission disabled

Default: True

8.3.2 Answer Signal

Signal Name: Answer Signal

Signal ID: ans (0x0002)

Description: The MGC uses this signal to order the MG to provide an answer signal.

Signal type: TO

Duration: Default provisioned in MG. The MGC may override this default by providing a duration.

8.3.2.1 Additional parameters

8.3.2.1.1 Answer Type

Parameter Name: ANS Type

Parameter ID: AnsType (0x0001)

Description: The type of answer signal to be sent.

Type: Enumeration

Optional: Yes

Possible values:	ANS	(0x0001) V.25 ANS (equivalent to T.30 CED) for all modes
	ANSBAR	(0x0002) V.25 ANS with phase reversals for all modes
	ANSAM	(0x0003) V.8 ANSam for all modes
	ANSAMBAR	(0x0004) V.8 ANSam with phase reversals for all modes
	V18txp1	(0x0005) A V.18 txp signal played in V.21 channel (1) for TEXT
	V18txp2	(0x0006) A V.18 txp signal played in V.21 channel (2) for TEXT
	ansnosig	(0x0007) Not used (Reserved)

NOTE – The normal H.248 signal replacement procedures are used to turn off a signal and shall be used.

Default: Provisioned

8.3.3 Calling Signal

Signal Name: Calling Signal

Signal ID: callsig (0x0003)

Description: The MGC uses this signal to order the MG to provide a calling signal.

Signal Type: TO

Duration: Default provisioned in MG. The MGC may override this default by providing a duration.

8.3.3.1 Additional parameters

8.3.3.1.1 Call Signal Name

Parameter Name: Call Signal Name

Parameter ID: csn (0x0001)

Description: Indicates the type of calling tone to be sent.

Type: Enumeration

Optional: Yes

Possible values: CT (0x0001) V.25 Calling Tone used for TEXT and DATA
 CNG (0x0002) T.30 Calling tone used for FAX with defined cadence
 callnosig (0x0003) Not Used (Reserved)

NOTE – The normal H.248 signal replacement procedures are used to turn off a signal and shall be used.

Default: Provisioned

8.3.4 V8bisSignal

Signal Name: V8bis Signal

Signal ID: v8bs (0x0004)

Description: The MGC uses this signal to order the MG to provide a V.8 *bis* signal.

Signal type: BR

Duration: Default provisioned in MG. The MGC may override this default by providing a duration.

8.3.4.1 Additional parameters

8.3.4.1.1 V.8bis Signal Name

Parameter Name: V8bisSigname

Parameter ID: V8bsn (0x0001)

Description: V.8 *bis* signals can be used in all modes. Some V.8 *bis* signals contain data messages, supplied in V8bisSigContents.

Type: Enumeration

Optional: Yes

Possible values:

ESi	(0x0001)	V.8 <i>bis</i> signal ESi
ESr	(0x0002)	V.8 <i>bis</i> signal ESr
MRe	(0x0003)	V.8 <i>bis</i> signal MRe
MRdi	(0x0004)	V.8 <i>bis</i> signal MRd from initiator
MRdrh	(0x0005)	V.8 <i>bis</i> signal MRd from responder on high power
CRel	(0x0006)	V.8 <i>bis</i> signal CRd on low power
CRdi	(0x0007)	V.8 <i>bis</i> signal CRd from initiator
CRdr	(0x0008)	V.8 <i>bis</i> signal CRd from responder
MS	(0x0009)	V.8 <i>bis</i> message MS with contents in signalvalue
CL	(0x000A)	V.8 <i>bis</i> message CL with contents in signalvalue
CLR	(0x000B)	V.8 <i>bis</i> message CLR with contents in signalvalue
ACK	(0x000C)	V.8 <i>bis</i> message ACK with contents in signalvalue
NAK	(0x000D)	V.8 <i>bis</i> message NAK with contents in signalvalue
MRdrl	(0x000E)	V.8 <i>bis</i> signal MRd from responder on low power
CRdh	(0x000F)	V.8 <i>bis</i> signal CRd on high power

Default: Provisioned

8.3.4.1.2 V.8bis Signal Contents

Parameter Name: V8bis Signal Contents

Parameter ID: V8bscont (0x0002)

Description: Some of the V.8 *bis* signals are messages. Their contents can be defined with the V8biscont parameter.

V.8 *bis* can be used in TEXT, FAX and DATA modes.

The transmitted V.8 *bis* message frame(s) is specified as hexadecimal octet coded string (see 3.1). Additional messages are delimited by comma characters. Flag generation, flag transparency 0-bit insertion and FCS generation are performed by the MG. If no data is provided by the MGC, no V.21 carrier is generated beyond that used in segment 2. For two concatenated messages, the MG shall insert the required preamble between the first and second messages.

Type: String

Optional: Yes

Possible values: Valid contents for the V.8 *bis* signals

Default: Empty string ("")

8.3.5 V18 Probe

Signal Name: V18 Probe

Signal ID: v18prob (0x0005)

Description: This signal transmits the v18 probes in order to stimulate possible text telephones to transmit connect establishing signals. The probes are sent according to the specification in ITU-T Rec. V.18. For carrierless probes, the string in the "probemsg" property is transmitted. The probes are sent in the order specified in the property "probeorder".

Signal type: BR

Duration: Default provisioned in MG. The MGC may override this default by providing a duration.

8.3.5.1 Additional parameters

None.

8.4 Statistics

None.

8.5 Procedures

The Call Type Discrimination package is invoked for cases when the network connection is established and the call may enter one of the types of voice, fax, text telephone and modem. The package contains functionality to support the decision and connection processes. Once discriminated and the modem handshaking completed, an appropriate specific call type package should be invoked to complete the connection establishment on the modulation level and perform the session.

When used for active modem negotiation, by means of commands from the MGC, the termination shall be made to operate according to the Recommendations for modem negotiation: ITU-T Recs V.25, V.8, V.8 *bis*, V.18 and T.30. For probing according to ITU-T Rec. V.18 during the negotiating process, the probing mechanism may be applied as defined in this package by turning the signal V18prob ON.

The package may also be used for monitoring and reporting on data activity on the termination.

8.5.1 Informative description

If the desired call type is known from the beginning, the Call Type Discrimination package should be invoked in order to actively try to establish a connection by sending out stimulating signals. By contrast, this package is also used to monitor the line to detect signals which are to be relayed to the Media Gateway Controller as input to a discrimination decision. Either the MGC or the MG may be assigned to perform the bearer level call discrimination signalling. In principle, when tones are reported to the MGC as events by an MG, the MG should avoid passing these tones via the media stream where possible, to reduce the possibility of unwanted duplicate tones (the MGC may subsequently order the MG to send these tones). Since the Call Type Discrimination package can be invoked to initially only monitor the line, it can be invoked on lines where voice calls are the most common mode of operation. There may be situations where this passive way of working results in less efficient or less reliable connection in fax/text/data mode.

8.5.2 Operation

The package is activated on a termination of a line in an outgoing or incoming call where fax, text or data mode may be wanted. The properties are set to the enabled call types.

8.5.3 Operation for incoming calls

The call is answered, the destination is evaluated, and the remote call initiated using packages and gateway functions outside the scope of this package.

The MGC may order stimulating signals defined in this package to be sent on the line.

The line is monitored for signals for the selected modes as defined in the "dtone" event descriptor.

The MGC is expected to evaluate call type indications of all types; registered type of the destination, offered capabilities of the endpoint, invoked connection efforts of specific types from the endpoint. It can then use these call level indications to request the MG to further evaluate the call types. The MGC can then use the bearer level discriminating events from the MG to determine which call type should be used.

As soon as the modem handshaking is complete, and a condition is reached that is valid for only one call type, a package for handling that call type should be invoked by the MGC, thus placing the MG into the desired mode of operation.

The package contains components for conducting a negotiation procedure according to the different connection procedures defined in ITU-T Recs V.25, V.8, V.8 *bis*, T.30, T.38 and V.18. (V.8 *bis* support is optional and its availability can be interrogated through the property V8bissupport.)

8.5.4 Operation for transit calls, coming from and going to the switched network

If no fax/text/data indication is present in the incoming call, the outgoing call is placed in voice mode, with the Call Type Discrimination package active.

If the MGC is responsible for call discrimination signalling and if a valid tone is detected, it is reported to the MGC as an event. By actions of the MGC, it can then request the MG to signal to play the tone at the other end. The process continues according to the rules of the connection procedures until the call type can be determined and the mode of operation can be established.

If the MG is responsible for call discrimination signalling then it shall perform the call type discrimination signalling itself and report the discriminated call type to the MGC via a notified event.

8.5.5 Operation for calls having one endpoint in the packet network

If no fax/text/data indication is present in the incoming call, the outgoing call in the packet network is placed in voice mode.

If a request to open a text channel, a fax channel or a data channel is made from the packet endpoint, the corresponding call type is tried on the switched network connection.

If a signal indicating presence of a fax, textphone or a modem is received from the circuit switched network, and the call type can be evaluated, a corresponding channel is requested to the remote packet endpoint. If that request is acknowledged, the connection in the fax/text/data mode is completed on the switched side.

If the call type cannot be evaluated, further signal exchange is performed on the switched interface until the call type is determined, and then the channel establishment continues on the packet side.

8.5.6 Cases when the call type cannot be determined from the signals

For cases when the call type cannot be determined by the signal exchange, a decision must be taken by other means, or a transparent transport can be selected.

The other means to make the decision may be a number analysis and comparison to registered user preferences or network defaults.

Cases when the decision is not possible by signal analysis but need to be taken by external means:

V.21: Used both for text telephony and for credit card transactions. The decision is recommended to be based on regional preferences and registering preference for data per destination number in regions where the default preference is for text telephony.

V.23: Used both for Minitel-based text telephones and for the Minitel information retrieval system. The conflict is only when an answering endpoint transmits the v23hi signal. A transparent data transport is recommended for this case.

8.5.7 Scenarios and call flows

Signal sequence scenarios can be derived from the different connection protocols, with T.38 being the main protocol for fax, V.18 for text telephony and V.8/V.25 for data.

The typical fax scenario is discriminated when CNG is detected from the calling end and a corresponding CED (ANS) and/or V.21 flags are detected at the answering end. For instances when either a CNG or ANS is not reported to the MGC, V.21 flags detection is sufficient for fax discrimination. Alternatively, a V.8 CM or JM signal with a fax call type may be detected at either end.

The text telephone scenario is discriminated when a text telephone call type is detected in V.8, a text telephone function is negotiated in V.8 *bis*, or a signal valid for text-only is detected.

The data scenario is discriminated when a data call type is detected in V.8, a data function is negotiated in V.8 *bis*, or a data mode (not text) is entered by any part.

In all cases, the handshaking protocol should be completed using the Call Type Discrimination package, before entering the selected data mode.

Appendix I shows an example call establishment and discrimination flow for the MGC controlled case and the MG controlled case.

8.5.8 Initial characters

For carrierless text telephones of the Baudot, EDT and DTMF types, the text transmission itself is needed for mode determination, and therefore the characters received during determination shall be stored. They shall be made available by local actions in the MG to be used by the txp package as initially received text for a seamless takeover of a connection.

8.5.9 Time-critical handling

The default way of handling connection requests should be to propagate the connection request to the remote endpoint, and verify capabilities before positively responding to an incoming connection request for fax, text or data mode. It can, however, be very time-consuming to verify the endpoint capabilities and connect appropriate channels. The caller may time out between detection of off-hook and receiving a positive signal. Similar time-critical steps exist in the V.8, V.8 *bis*, V.18, T.30 and V.25 procedures. The MGC must take action to compromise between the risk of one party timing out because of long waiting for a signal, and the risk of connecting a fax/text/data call before the capabilities of the endpoints are verified and the appropriate channels connected. One possible way to handle this risk is to define default actions to take before any party in the call times out. The ctyp package gives the MGC all necessary control to handle the connection process including such actions.

For time-critical applications, the MGC may indicate to the MG through the *ctyp/MGCallSig* property that the MG shall be responsible for the Call Discrimination signalling. The result of the discrimination process is communicated to the MGC through the *ctype/calldisres* event. This method saves multiple MGC/MG signalling round-trip times during the MGC control of the modem tones.

9 Fax package

Package Name: Fax
Package ID: fax (0x0012)
Description: The fax package is intended for enabling fax communication between terminals/applications in different networks or messaging environments. This package includes the mechanisms needed to identify T.30 fax sessions (signals and data).
Version: 1
Extends: None

9.1 Properties

9.1.1 Fax Connection State

Property Name: Fax Connection State
Property ID: faxstate (0x0001)
Description: After successful Phase A connection with the ctyp package, the connection state property is used to request a fax connection. When placing a termination into a fax mode, the initial state shall be set to "Negotiating".

When this property is interrogated, it shall reflect the state of the achieved fax connection. A connection effort can be cancelled by setting the faxstate property to Idle.

Type: Enumeration
Possible values:

Idle	(0x0001)	No connection efforts
Prepare	(0x0002)	Known in the termination and ready to accept connections
Negotiating	(0x0003)	Taking the initiative to establish a fax connection
TrainR	(0x0004)	Fax Phase B or later training as Receiver
TrainT	(0x0005)	Fax Phase B or later training as Transmitting
Connected	(0x0006)	Completed connection
EOP	(0x0007)	Procedures Complete
ProcInterrupt	(0x0008)	Procedure Interrupt Processing
Disconnect	(0x0009)	Premature Disconnect

Default: Idle, (0x0001)
Characteristics: Read/Write
Defined in: Termination State

9.1.2 Transmission Speed

Property Name: Transmission Speed
Property ID: trspd (0x0002)
Description: The Transport parameter reflects the transmission speed seen at the analogue interface for the fax relay or the transmission speed used by the FAX termination (T.30 PSTN).
Type: Integer
Possible values: 1200-33600
Default: Provisioned

Defined in: Termination State

Characteristics: Read/Write

9.1.3 PSTN Interface

Property Name: PSTN Interface

Property ID: pstnif (0x0003)

Description: The PSTN Interface parameter reflects the interface used to connect to a physical FAX machine.

Type: Enumeration

Possible values: NA (0x0001) Not applicable
V17 (0x0002)
V27TER (0x0003)
V29 (0x0004)
V21 (0x0005)
V34 (0x0006)

Default: Provisioned

Defined in: Termination State

Characteristics: Read/Write

9.1.4 Fax Transport

Property Name: Fax Transport

Property ID: ftrpt (0x0004)

Description: The Transport parameter reflects the transport mechanism selected for the fax termination.

Type: Enumeration

Possible values: T30 (0x0001) For T.30 PSTN sessions without ECM
T30ECM (0x0002) For T.30 PSTN sessions with ECM (non-V.34)
T30V34 (0x0003) For T.30 PSTN sessions with V.34 (half-duplex)

Default: Provisioned

Characteristics: Read/Write

Defined in: Termination State

9.2 Events

9.2.1 Fax Connection State Change

Event Name: Fax Connection State Change

Event ID: faxconnchange (0x0001)

Description: This event will occur when the fax connection state for the termination has changed. Its parameter is the new Fax Connection State. A connection effort that timed out returns the termination to the Idle state.

9.2.1.1 EventDescriptor parameters

None.

9.2.1.2 ObservedEventDescriptor parameters

9.2.1.2.1 Fax Connection Change

Parameter Name: Fax Connection Change

Parameter ID: faxconnchnng (0x0001)

Type: Enumeration

Optional: No

Possible values:

Idle	(0x0001)	No connection efforts
Prepare	(0x0002)	Known in the termination and ready to accept connections
Negotiating	(0x0003)	Taking the initiative to establish a fax connection
TrainR	(0x0004)	Fax Phase B or later training as Receiver
TrainT	(0x0005)	Fax Phase B or later training as Transmitting
Connected	(0x0006)	Completed connection
EOP	(0x0007)	Procedures Complete
ProcInterrupt	(0x0008)	Procedure Interrupt Processing
EOF	(0x0009)	End of fax session, call terminating
PI	(0x000A)	Priority Interrupt; Switch to Voice
Disconnect	(0x000B)	Premature Disconnect

Default: Idle (0x0001)

9.3 Signals

None.

9.4 Statistics

9.4.1 Number of Pages Transferred

Signal Name: Number of Pages Transferred

Statistics ID: pagestrans (0x0001)

Description: Number of pages of fax image data transferred through the termination.

Type: Integer

Possible values: 0 or more pages

Level: Termination

9.4.2 Train Downs

Statistic Name: Train Downs

Statistics ID: traintdowns (0x0002)

Description: Number of times FAX trained down during transmission.

Type: Integer

Possible values: 0 or more train downs

Level: Termination

9.5 Procedures

The following are standard transport mechanisms for fax in different environments.

- In T.30: Use T.30 procedures with and without ECM.
- In T.30 Annexes C and F: Use T.30 procedures selected via ITU-T Rec. V.8 (used for V.34 fax).

9.5.1 Function

A termination with Fax provides a method for transfer of fax pages preceded by negotiations in the call set-up according to procedures defined for each environment. When matching capabilities exist, the appropriate sessions can be established in order to transfer pages of image or binary data.

Real-time fax allows telecom users to transfer fax pages in real-time. The procedural aspects of GSTN fax are defined in ITU-T Rec. T.30. The compression methods used in transporting fax images are defined in ITU-T Recs T.4, T.6, T.81, T.82, T.85 and T.44. In traditional T.30 without error correction, images are transferred in a stream one page at a time. In T.30 with error correction, images are transferred in blocks that are also known as partial pages. Numerous examples of fax sessions are contained in Appendix IV/T.30.

- For each transport environment, a suitable transport protocol must be selected to carry the image. Currently defined and recommended transport environments for T.30 media streams that can be supported by this package are GSTN networks, where the procedures are defined in ITU-T Recs T.30, T.30, Annex A (for error correction), T.30, Annex C (duplex protocol) and Annex F (half duplex V.34 protocol).

9.5.2 Process of adding Fax-capable terminations

The MGs are responsible for detecting fax tones and relaying the related events to the MGC. The MGC should conduct Call Discrimination as defined within the Call Type Discrimination package in order to determine whether a fax or other mode is applicable. The MGC may choose to skip this if the MG is not capable of the Call Type Discrimination package. Once the MGC evaluates the tones and determines that the incoming call is fax, the MGC shall execute appropriate Modify commands to place the termination into a "Negotiating" state.

9.5.3 Process of ending a fax call

The MGs are responsible for detecting events that would cause the interruption of a fax call. The MGC is responsible for making the determination if this switch can be made and instruct the MGs to switch. It is also responsible for switching it back to fax.

The MGC should receive indication that the fax call ends from the MG before receiving typical call termination indications.

10 IP Fax package

Package Name: IPFax

Package ID: ipfax (0x0013)

Description: The Fax package is intended for enabling real-time or store-and-forward fax communication between terminals/applications in different networks or messaging environments. This package includes the mechanisms needed to transport T.30 fax sessions (signals and data) in a real-time IP environment. The transport mechanism will be different for each environment where the package is used.

Version: 2
Extends: None

10.1 Properties

10.1.1 Fax Connection State

Property Name: Fax Connection State
Property ID: faxstate (0x0001)
Description: After successful Phase A connection with the ctyp package, the connection state property is used to request a fax connection. When placing a termination into a fax mode, the initial state shall be set to "Negotiating". When this property is interrogated, it shall reflect the state of the achieved fax connection.
Type: Enumeration
Possible values: Idle (0x0001) No connection efforts
Prepare (0x0002) Known in the termination and ready to accept connections
Negotiating (0x0003) Taking the initiative to establish a fax connection
TrainR (0x0004) Fax Phase B or later training as Receiver
TrainT (0x0005) Fax Phase B or later training as Transmitter
Connected (0x0006) For completed connection
EOP (0x0007) Procedures Complete
ProcInterrupt (0x0008) Procedure Interrupt Processing
Disconnect (0x0009) Premature Disconnect
Default: Idle (0x0001)
Characteristics: Read/Write
Defined in: Termination State

10.1.2 Transmission Speed

Property Name: Transmission Speed
Property ID: trspd (0x0002)
Description: The Transport property reflects the transmission speed seen at the IP interface for the fax relay. A value of zero (0) indicates that there is no speed set.
Type: Integer
Possible values: 0-33600
Default: 0
Characteristics: Read/Write
Defined in: Termination State

10.1.3 T.38 Capabilities

Property Name: T.38 Capabilities
Property ID: T38Capabilities (0x0003)
Description: These capabilities describe the T.38 fax termination. They are defined in Annex B/T.38. Their SDP equivalents are defined in Annex D/T.38.
Type: Sub-list of Enumeration

Possible values: FaxFillBitRemoval (0x0001) Indication of fill bit removal
FaxTranscodingMMR (0x0002) For MMR transcoding availability
FaxTranscodingJBIG (0x0003) For JBIG transcoding availability
UDPFEC (0x0004) UDP Forward Error Correction
UDPRedundancy (0x0005) UDP Redundancy Error Correction

Default: Provisioned

Characteristics: Read/Write

Defined in: Termination State

10.1.4 T.38 Maximum Buffer Size

Property Name: T.38 Maximum Buffer Size

Property ID: T38MaxBufferSize (0x0004)

Description: This capability describes the T.38 fax termination. They are defined in Annex B/T.38. Their SDP equivalents are defined in Annex D/T.38.

Type: Integer

Possible values: 0-32765

Default: Provisioned

Characteristics: Read/Write

Defined in: Termination State

10.1.5 T.38 Maximum Datagram Size

Property Name: T.38 Maximum Datagram Size

Property ID: T38MaxDatagramSize (0x0005)

Description: This capability describes the T.38 fax termination. They are defined in Annex B/T.38. Their SDP equivalents are defined in Annex D/T.38.

Type: Integer

Possible values: 0-32765

Default: Provisioned

Characteristics: Read/Write

Defined in: Termination State

10.1.6 T.38 Version

Property Name: T.38 Version

Property ID: T38Version (0x0006)

Description: This is the T.38 version number.

Type: Integer

Possible values: 0-32765

Default: Provisioned

Characteristics: Read/Write

Defined in: Termination State

10.1.7 IP Fax Transport

Property Name: IP Fax Transport
Property ID: ipftrpt (0x0007)
Description: The IP Fax Transport parameter reflects the transport mechanism selected for the fax termination.
Type: Enumeration
Possible values: T38UDPTL (0x0001) For T.38 using UDPTL
T38TCP (0x0002) For T.38 using TCP
T37 (0x0003) For T.37
AUDIO (0x0004) For audio codec (e.g., G.711 over RTP)
Default: Provisioned
Characteristics: Read/Write
Defined in: Termination State

10.2 Events

10.2.1 Fax Connection State Change

Event Name: Fax Connection State Change
Event ID: faxconnchange (0x0001)
Description: This event will occur when the fax connection state for the termination has changed. Its parameter reflects the new state. If a connection effort times out, it is reported in this event, with the faxconnchnng parameter set to Idle.

10.2.1.1 EventDescriptor parameters

None.

10.2.1.2 ObservedEventDescriptor parameters

10.2.1.2.1 Fax Connection Change

Parameter Name: Fax Connection Change
Parameter ID: faxconnchnng (0x0001)
Description: Indicates the state of the fax connection
Type: Enumeration
Optional: No
Possible values: Idle (0x0001) No connection efforts
Prepare (0x0002) Known in the termination and ready to accept connections
Negotiating (0x0003) Taking the initiative to establish a fax connection
TrainR (0x0004) Fax Phase B or later training as Receiver
TrainT (0x0005) Fax Phase B or later training as Transmitter
Connected (0x0006) For completed connection
EOP (0x0007) Procedures Complete
ProcInterrupt (0x0008) Procedure Interrupt Processing
EOF (0x0009) – end of fax session, call terminating
PI (0x000A) – Priority Interrupt; Switch to Voice
Disconnect (0x000B) Premature Disconnect

Default: Idle (0x0001)

10.3 Signals

None.

10.4 Statistics

10.4.1 Pages Transferred

Statistic Name: Pages Transferred

Statistics ID: pagestrans (0x0001)

Description: Number of pages of fax image data transferred through the termination

Type: Integer

Possible values: 0 or more pages

Level: Termination

10.4.2 Train Downs

Statistic Name: Train Downs

Statistics ID: traindowns (0x0002)

Description: Number of times FAX trained down during transmission

Type: Integer

Possible values: 0 or more train downs

Level: Termination

10.5 Procedures

The following are standard transport mechanisms for fax in different environments.

- In Annex B/T.38: UDPTL or TCP in T.38 fax-only communication channel environment.
- In Annex D/H.323: UDPTL or TCP as selected with H.245 messages.
- In Annex D/T.38 (SIP): UDPTL or TCP as initiated with SDP.
- In Annex E/T.38: UDPTL or TCP as initiated with H.248.
- In T.37: SMTP (MIME)/TCP.

10.5.1 Function

A termination with Fax provides a method for transfer of fax pages preceded by negotiations in the call set-up according to procedures defined for each environment. When matching capabilities exist, the appropriate sessions can be established in order to transfer pages of image or binary data.

Real-time fax allows telecom users to transfer fax pages in real-time. For each transport environment, a suitable transport protocol must be selected to carry the image. Currently defined and recommended transport environments for T.30 media streams that can be supported by this package are:

- 1) packet networks, where the procedures described in Annex B/T.38 can be used for setting up and conducting fax sessions, using TCP or UDPTL for the transport of T.30 signals and data;
- 2) packet networks, where the procedures described in Annex D/H.323 can be used for setting up and conducting fax and voice sessions, using TCP or UDPTL as negotiated via H.245;

- 3) packet networks, where the IETF Session Initiation Protocol (SIP) can be used for setting up and conducting fax sessions as defined in Annex D/T.38 using UDPTL or TCP for the transport of T.30 signals and data;
- 4) packet networks, where H.248 can be used for setting up and conducting fax sessions as defined in Annex E/T.38 using UDPTL or TCP for the transport of T.30 signals and data;
- 5) packet networks, where the packets of G.711 coded data (with T.30 signals and data embedded) can be transported via RTP.

The Extended Simple Mail Transport Protocol messaging environment over packet, that can be used alone or in conjunction with any of the environments above, where ITU-T Rec. T.37 specifies the methods for transporting image/tiff files using the same compression methods as specified for use in ITU-T Rec. T.30. For information it can be noted that IETF RFCs 2301, 3302, 3191, 3192 and 2305 and IETF RFCs 2530, 2879 and 2532 specify these transport mechanisms.

Interworking between these forms of fax can be achieved through the use of gateways with packages defined here.

10.5.2 Process of adding IP fax-capable terminations

The MGs are responsible for detecting fax tones and relaying the related events to the MGC. The MGC should conduct Call Discrimination as defined within the Call Type Discrimination package in order to determine whether a fax or other mode is applicable. The MGC may choose to skip this if the MG is not capable of the Call Type Discrimination package. Once the MGC evaluates the tones and determines that the incoming call is fax, the MGC shall execute appropriate Modify commands to place the IP fax-capable termination into a "Negotiating" state.

10.5.3 Process of ending a fax call

The MGs are responsible for detecting events that would cause the interruption of a fax call. The MGC is responsible for making the determination if this switch can be made, and instruct the MGs to switch. It is also responsible for switching it back to fax.

The MGC should receive indication that the fax call ends from the MG before receiving typical call termination indications.

10.5.4 Informative example

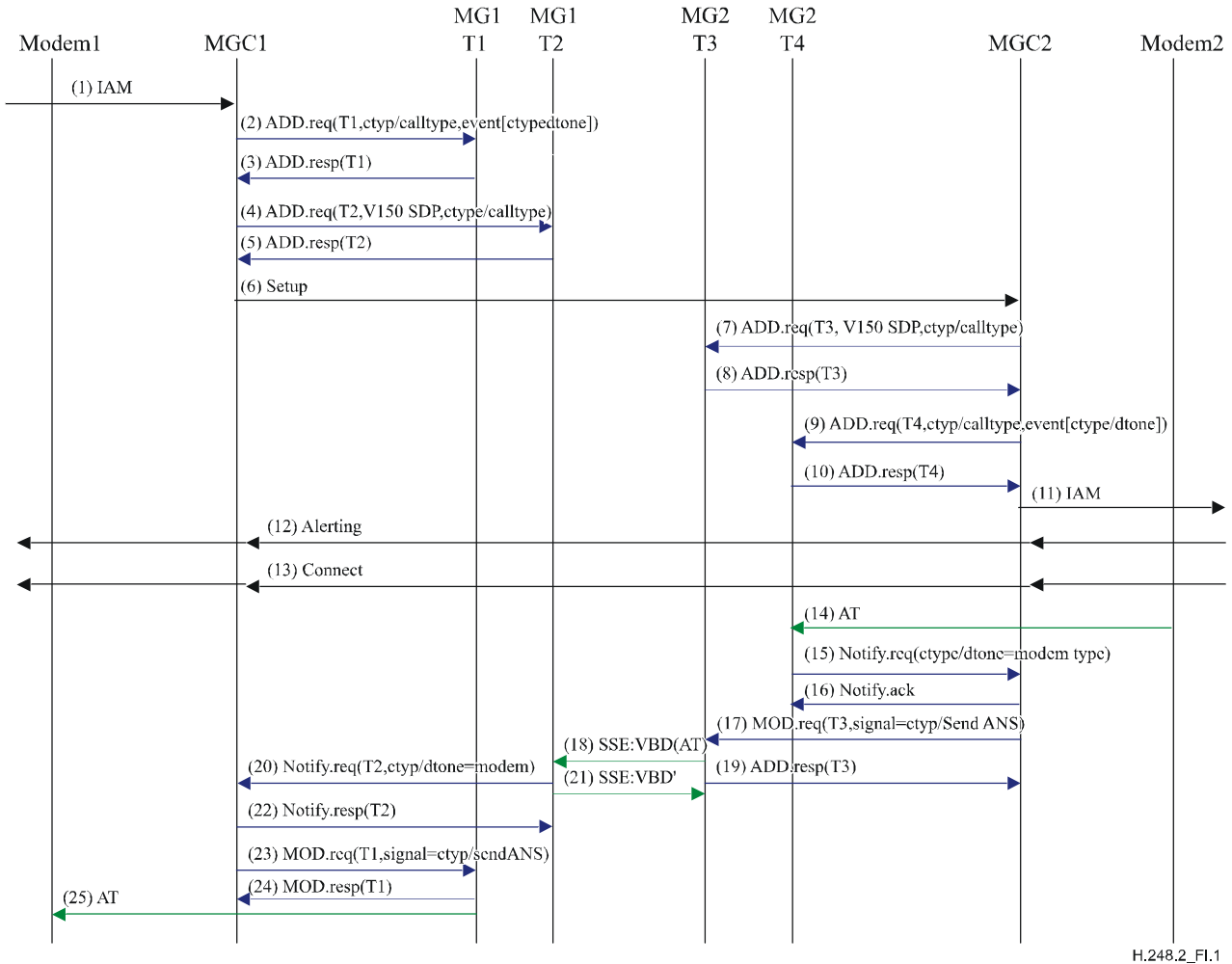
One possible instruction from an MGC to an MG to modify an existing context to a T.38 media stream:

```
MGC to MG:
MEGACO/1.0 [123.123.123.4]:55555
Transaction = 14 {
  Context = 2000 {
    Modify = RTP/1 {
      Media {
        Stream = 1 {
          Local {
v=0
c=IN IP4 124.124.124.222
m=image 1111 udpt1 t38
a=T38FaxRateManagement:transferredTCF
a=T38UdpEC:t38UDPFEC
          }
        }
      }
    }
  }
}
```

Appendix I

Call discrimination flows

This appendix details example call flows in Figures I.1 and I.2 for Call Establishment and discrimination. It details call controlling signalling, H.248 and bearer and in-band signalling interactions.



H.248.2_FI.1

Figure I.1/H.248.2 – MGC controlled call discrimination

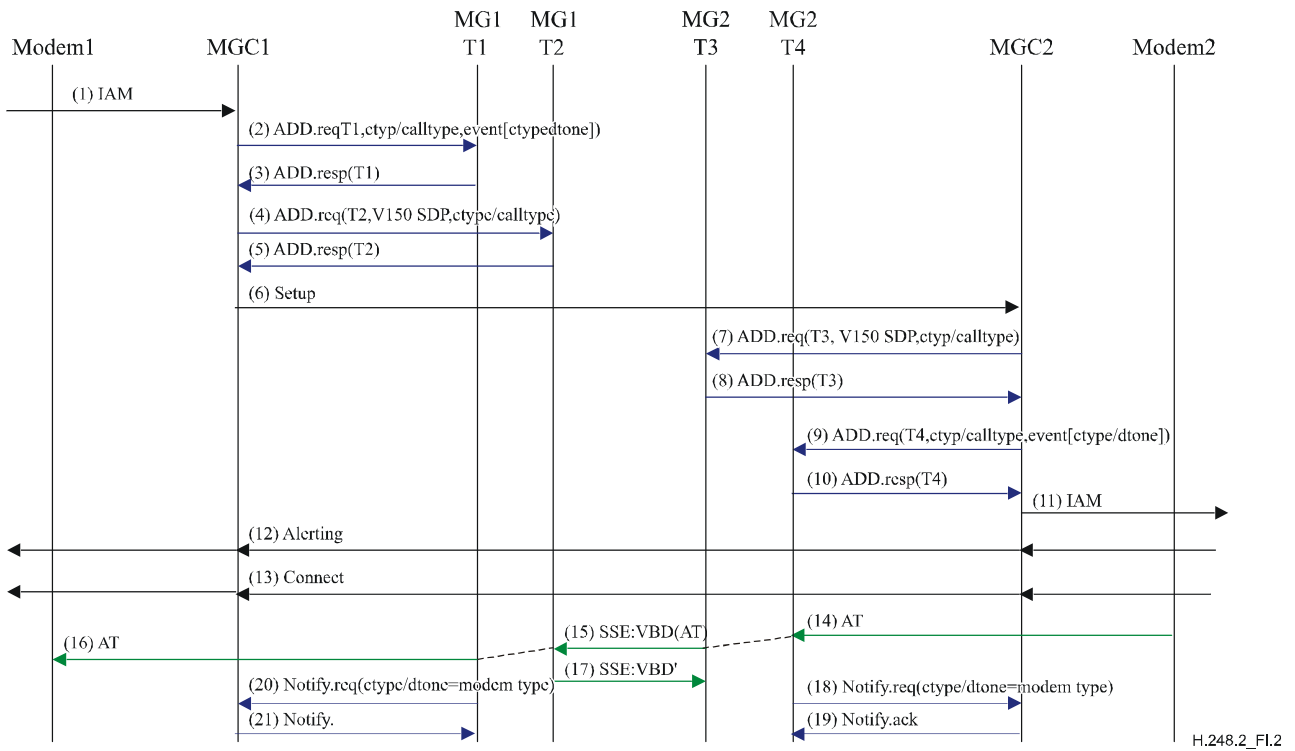


Figure I.2/H.248.2 – MG controlled call discrimination

SERIES OF ITU-T RECOMMENDATIONS

Series A	Organization of the work of ITU-T
Series D	General tariff principles
Series E	Overall network operation, telephone service, service operation and human factors
Series F	Non-telephone telecommunication services
Series G	Transmission systems and media, digital systems and networks
Series H	Audiovisual and multimedia systems
Series I	Integrated services digital network
Series J	Cable networks and transmission of television, sound programme and other multimedia signals
Series K	Protection against interference
Series L	Construction, installation and protection of cables and other elements of outside plant
Series M	Telecommunication management, including TMN and network maintenance
Series N	Maintenance: international sound programme and television transmission circuits
Series O	Specifications of measuring equipment
Series P	Telephone transmission quality, telephone installations, local line networks
Series Q	Switching and signalling
Series R	Telegraph transmission
Series S	Telegraph services terminal equipment
Series T	Terminals for telematic services
Series U	Telegraph switching
Series V	Data communication over the telephone network
Series X	Data networks, open system communications and security
Series Y	Global information infrastructure, Internet protocol aspects and next-generation networks
Series Z	Languages and general software aspects for telecommunication systems