

Superseded by a more recent version



INTERNATIONAL TELECOMMUNICATION UNION

ITU-T

TELECOMMUNICATION
STANDARDIZATION SECTOR
OF ITU

M.2120

(04/97)

SERIES M: TMN AND NETWORK MAINTENANCE:
INTERNATIONAL TRANSMISSION SYSTEMS,
TELEPHONE CIRCUITS, TELEGRAPHY, FACSIMILE
AND LEASED CIRCUITS

International transport network

**PDH path, section and transmission system and
SDH path and multiplex section fault detection
and localization procedures**

ITU-T Recommendation M.2120

Superseded by a more recent version

(Previously CCITT Recommendation)

Superseded by a more recent version

ITU-T M-SERIES RECOMMENDATIONS

TMN AND NETWORK MAINTENANCE: INTERNATIONAL TRANSMISSION SYSTEMS, TELEPHONE CIRCUITS, TELEGRAPHY, FACSIMILE AND LEASED CIRCUITS

| | |
|---|----------------------|
| Introduction and general principles of maintenance and maintenance organization | M.10–M.299 |
| International transmission systems | M.300–M.559 |
| International telephone circuits | M.560–M.759 |
| Common channel signalling systems | M.760–M.799 |
| International telegraph systems and phototelegraph transmission | M.800–M.899 |
| International leased group and supergroup links | M.900–M.999 |
| International leased circuits | M.1000–M.1099 |
| Mobile telecommunication systems and services | M.1100–M.1199 |
| International public telephone network | M.1200–M.1299 |
| International data transmission systems | M.1300–M.1399 |
| Designations and information exchange | M.1400–M.1999 |
| International transport network | M.2000–M.2999 |
| Telecommunications management network | M.3000–M.3599 |
| Integrated services digital networks | M.3600–M.3999 |
| Common channel signalling systems | M.4000–M.4999 |

For further details, please refer to ITU-T List of Recommendations.

Superseded by a more recent version

ITU-T RECOMMENDATION M.2120

PDH PATH, SECTION AND TRANSMISSION SYSTEM AND SDH PATH AND MULTIPLEX SECTION FAULT DETECTION AND LOCALIZATION PROCEDURES

Summary

This Recommendation provides procedures for fault detection and localization with and without in-service monitoring for PDH paths, sections, and transmission systems and for SDH paths and multiplex sections. Filtering and thresholding of performance informations are described for reporting to the TMN. Returning into service and long-term trend analysis are considered.

Source

ITU-T Recommendation M.2120 was revised by ITU-T Study Group 4 (1997-2000) and was approved under the WTSC Resolution No. 1 procedure on the 19th of April 1997.

Keywords

Fault detection; filtering; in-service monitoring; localization; long-term trend analysis; PDH path; PDH section; PDH transmission system; returning into service; SDH multiplex section; SDH path; thresholding; TMN.

Superseded by a more recent version

FOREWORD

ITU (International Telecommunication Union) is the United Nations Specialized Agency in the field of telecommunications. The ITU Telecommunication Standardization Sector (ITU-T) is a permanent organ of the ITU. The ITU-T is responsible for studying technical, operating and tariff questions and issuing Recommendations on them with a view to standardizing telecommunications on a worldwide basis.

The World Telecommunication Standardization Conference (WTSC), which meets every four years, establishes the topics for study by the ITU-T Study Groups which, in their turn, produce Recommendations on these topics.

The approval of Recommendations by the Members of the ITU-T is covered by the procedure laid down in WTSC Resolution No. 1.

In some areas of information technology which fall within ITU-T's purview, the necessary standards are prepared on a collaborative basis with ISO and IEC.

NOTE

In this Recommendation, the expression "Administration" is used for conciseness to indicate both a telecommunication administration and a recognized operating agency.

INTELLECTUAL PROPERTY RIGHTS

The ITU draws attention to the possibility that the practice or implementation of this Recommendation may involve the use of a claimed Intellectual Property Right. The ITU takes no position concerning the evidence, validity or applicability of claimed Intellectual Property Rights, whether asserted by ITU members or others outside of the Recommendation development process.

As of the date of approval of this Recommendation, the ITU had/had not received notice of intellectual property, protected by patents, which may be required to implement this Recommendation. However, implementors are cautioned that this may not represent the latest information and are therefore strongly urged to consult the TSB patent database.

© ITU 1997

All rights reserved. No part of this publication may be reproduced or utilized in any form or by any means, electronic or mechanical, including photocopying and microfilm, without permission in writing from the ITU.

Superseded by a more recent version

CONTENTS

| | Page |
|-------|---|
| 1 | General..... 1 |
| 1.1 | Scope..... 1 |
| 1.2 | References..... 1 |
| 1.3 | Abbreviations..... 2 |
| 2 | Maintenance techniques with ISM 2 |
| 2.1 | Relationship with Recommendation M.20 2 |
| 2.2 | Fault localization information..... 3 |
| 2.2.1 | Performance information..... 3 |
| 2.2.2 | Performance level information 4 |
| 2.2.3 | Performance primitives information..... 4 |
| 2.2.4 | Supplementary information 4 |
| 2.3 | Performance filtering, thresholding, reporting and historical storage 4 |
| 2.3.1 | Parameters 4 |
| 2.3.2 | Transmission states and threshold reports 4 |
| 2.3.3 | Filter types used for evaluating transmission states and threshold reports ... 5 |
| 2.3.4 | Evaluation of transmission states and threshold reports..... 5 |
| 2.3.5 | Performance history storage in network elements..... 7 |
| 2.3.6 | Performance history reporting from network elements..... 7 |
| 2.3.7 | Accuracy and resolution 7 |
| 2.3.8 | Single-ended monitoring capability 8 |
| 3 | Fault localization procedures on PDH transmission systems and SDH multiplex sections..... 8 |
| 3.1 | Fault localization in a pre-ISM environment..... 8 |
| 3.2 | Fault localization in an ISM environment 8 |
| 4 | Fault localization procedures on PDH and SDH paths..... 8 |
| 4.1 | Fault localization in a pre-ISM environment or using OOS means..... 8 |
| 4.2 | Fault localization in an ISM environment 9 |
| 5 | Returning a maintenance entity into service..... 11 |
| 6 | Trend analysis and signatures 11 |

Superseded by a more recent version

Recommendation M.2120

PDH PATH, SECTION AND TRANSMISSION SYSTEM AND SDH PATH AND MULTIPLEX SECTION FAULT DETECTION AND LOCALIZATION PROCEDURES

(published in 1992, revised Geneva, 1997)

1 General

1.1 Scope

The TMN, as described in Recommendation M.3010 [5], is being progressively implemented by many Administrations. The maintenance procedures described here cover both the case where full ISM is available (as in the TMN) and the case where no ISM or partial ISM is available. The latter case is referred to as pre-ISM.

Information processing will be more integrated or less integrated depending on the TMN's degree of development.

ISM should be understood as a situation where a dedicated full-time performance monitor exists for a path and/or transmission system. This facilitates performance data collection and storage, scheduled periodic reporting of current and historic data, exception reporting, and setting of thresholds.

A pre-ISM situation exists if any condition does not meet the definition of ISM (e.g. existence of time shared monitoring, no monitoring at all).

1.2 References

The following ITU-T Recommendations, and other references contain provisions which, through reference in this text, constitute provisions of this Recommendation. At the time of publication, the editions indicated were valid. All Recommendations and other references are subject to revision; all users of this Recommendation are therefore encouraged to investigate the possibility of applying the most recent edition of the Recommendations and other references listed below. A list of the currently valid ITU-T Recommendations is regularly published.

- [1] CCITT Recommendation M.20 (1992), *Maintenance philosophy for telecommunications network*.
- [2] ITU-T Recommendation M.2100 (1995), *Performance limits for bringing-into-service and maintenance of international PDH paths, sections and transmission systems*.
- [3] ITU-T Recommendation M.2101.1 (1997), *Performance limits for bringing-into-service and maintenance of international SDH paths and multiplex sections*.
- [4] ITU-T Recommendation M.2110 (1997), *Bringing-into-service of international PDH paths, sections and transmission systems and SDH paths and multiplex sections*.
- [5] ITU-T Recommendation M.3010 (1996), *Principles for a telecommunications management network*.
- [6] ITU-T Recommendation O.150 (1996), *General requirements for instrumentation for performance measurements on digital transmission equipment*.
- [7] CCITT Recommendation O.151 (1992), *Error performance measuring equipment operating at the primary rate and above*.

Superseded by a more recent version

- [8] CCITT Recommendation O.161 (1984), *In-service code violation monitors for digital systems*.
- [9] CCITT Recommendation O.162 (1992), *Equipment to perform in-service monitoring on 2048, 8448, 34 368 and 139 264 kbit/s signals*.
- [10] CCITT Recommendation O.163 (1988), *Equipment to perform in-service monitoring on 1544 kbit/s signals*.
- [11] ITU-T Recommendation O.181 (1996), *Equipment to assess error performance on STM-N interfaces*.

1.3 Abbreviations

This Recommendation uses the following abbreviations.

| | |
|-----|---------------------------------------|
| BIS | Bringing-Into-Service |
| CRC | Cyclic Redundancy Check |
| ES | Errored Second |
| ISM | In-Service Monitoring |
| ME | Maintenance Entity |
| MEF | Maintenance Entity Function |
| OOS | Out-Of-Service |
| PDH | Plesiochronous Digital Hierarchy |
| RTR | Reset Threshold Report |
| SDH | Synchronous Digital Hierarchy |
| SEF | Support Entity Function |
| SES | Severely Errored Second |
| TMN | Telecommunications Management Network |
| TR | Threshold Report |

2 Maintenance techniques with ISM

2.1 Relationship with Recommendation M.20

Recommendation M.20 [1], "Maintenance philosophy for telecommunications networks", provides guidance for maintenance operations. This clause expands on the principles given in Recommendation M.20 [1] with specific application to transmission systems and ISM. Figure 1 includes abridged versions of Figures 7/M.20 and 9/M.20.

Superseded by a more recent version

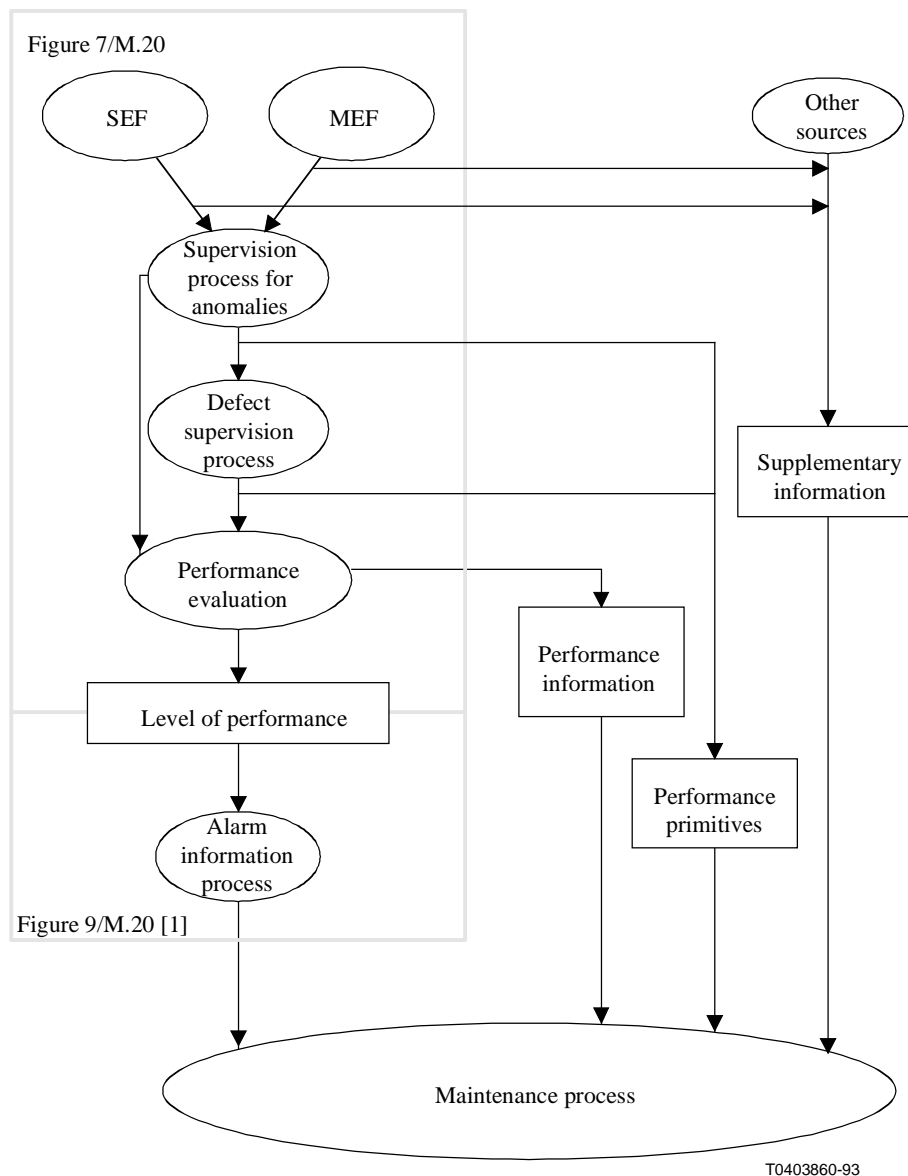


Figure 1/M.2120 – Process of elaboration of information used for maintenance

2.2 Fault localization information

Once an alarm indication is received, the fault localization process must begin. For this purpose several categories of information are required:

- performance information;
- performance level information;
- performance primitives;
- supplementary information.

2.2.1 Performance information

Performance information is in terms of the parameters of Recommendations M.2100 [2] and M.2101.1 [3], and is used to calculate the performance levels. Normally it will be time-stamped and stored for correlation analysis and for long-term trend analysis (see clause 6).

Superseded by a more recent version

2.2.2 Performance level information

Performance level information (unacceptable performance level, degraded performance level, normal performance level) is derived from performance information (or the equivalent performance primitives). It is the information which will start the alarm information process as shown in Figure 1 when a performance limit is reached. The performance limits are also referred to as alarm thresholds. The alarm generated (i.e. prompt maintenance alarm, deferred maintenance alarm or maintenance event information) determines the urgency of subsequent actions.

2.2.3 Performance primitives information

Performance primitives are the basic information in the form of anomalies and defects used to determine the parameter counts of Recommendations M.2100 [2] and M.2101.1 [3]. Performance primitives depend on the type of entity being monitored.

2.2.4 Supplementary information

Supplementary information is information other than that obtained from monitoring. It includes derived information such as the identification of a faulty ME or sub-entity, or information from other MEs. It also includes administrative information such as the constitution of a path.

Supplementary information also includes such information as direct transmission restoration (protection switching) counts.

2.3 Performance filtering, thresholding, reporting and historical storage

The functions described in this subclause can be performed inside or outside the network element.

2.3.1 Parameters

The evaluation of error performance and availability performance is based on the processing of the two parameters ES and SES. The derivation of these parameters from standardized signal information is given in Recommendations M.2100 [2] and M.2101.1 [3].

2.3.2 Transmission states and threshold reports

2.3.2.1 Transmission states

A path can be in one of two transmission states:

- unavailable state;
- available state.

The transmission state is determined from filtered SES/non-SES data (see 2.3.3.1 and 2.3.4.1).

2.3.2.2 Threshold reports

A TR is an unsolicited error performance report from an ME with respect to either a 15-minute or 24-hour evaluation period.

TRs can only occur when the concerned direction is in the available state.

Six TRs are defined based on filtered ES and SES data:

2.3.2.2.1 TRs based on a 15-minute evaluation period

TR1-ES occurs as soon as the 15-minute ES threshold is reached or exceeded.

Superseded by a more recent version

RTR1-ES optionally occurs at the end of a 15-minute period in which the ES count is less than or equal to the "reset" ES threshold. It can only occur subsequent to a 15-minute period containing a TR1-ES. Subclause 2.3.4.2 gives precise details.

TR1-SES occurs as soon as the 15-minute SES threshold is reached or exceeded.

RTR1-SES optionally occurs at the end of a 15-minute period in which the SES count is zero. It can only occur subsequent to a 15-minute period containing a TR1-SES.

2.3.2.2 TRs based on a 24-hour evaluation period

TR2-ES occurs as soon as the 24-hour ES threshold is reached or exceeded.

TR2-SES occurs as soon as the 24-hour SES threshold is reached or exceeded.

There is no RTR for the 24-hour evaluation period. Subclause 2.3.4.3 gives precise details.

2.3.3 Filter types used for evaluating transmission states and threshold reports

Care needs to be taken with the ES and SES counters and the generation of TRs during changes in transmission states. Guidance on this issue is given in 2.3.4.4.

2.3.3.1 Unavailable and available state filters

The unavailable state filter is a 10-second rectangular sliding window, with 1-second granularity of slide.

The available state filter is also a 10-second rectangular sliding window, with 1-second granularity of slide.

2.3.3.2 TR1 and RTR1 filters

The TR1 and RTR1 filters are 15-minute rectangular fixed windows. The start and end time for the 15-minute rectangular fixed windows are the same from both ES and SES and must fall on the hour and at 15, 30, and 45 minutes after the hour.

2.3.3.3 TR2 filter

The TR2 filter is a 24-hour rectangular fixed window. The start and end time for the 24-hour rectangular fixed windows are the same from both ES and SES and must fall on a 15-minute window boundary.

2.3.4 Evaluation of transmission states and threshold reports

2.3.4.1 Evaluation of the unavailable and available states

The unavailable state is detected at the end of 10 consecutive SES. Upon detection, a date/time-stamped unavailable state report should be sent to the performance management centre. The time/date stamp should relate to the first of the 10 consecutive SES.

The termination of the unavailable state (i.e. re-entry of the available state) is detected at the end of 10 consecutive non-SES. Upon detection, a date/time-stamped termination of unavailability report should be sent to the performance management centre. The date/time-stamp should relate to the first of the 10 consecutive non-SES.

The unavailable seconds count and the unavailability event count should be calculated either within the network element or within a performance management system.

Superseded by a more recent version

2.3.4.2 Evaluation of TR1-ES/SES and RTR1-ES/SES

The parameters ES and SES are counted separately, second by second, over each 15-minute rectangular fixed window period. There are two TR1s, one for ES called TR1-ES and one for SES called TR1-SES. The threshold values should be programmable over the range 0 to 900 with default values. The default values are given in Recommendations M.2100 [2] and M.2101.1 [3].

There are two RTR1s, one for ES called RTR1-ES and one for SES called RTR1-SES. The threshold values should be programmable over the range 0 to 900. Default values for RTR1-ES for PDH are given in Recommendation M.2100 [2]. Default Values for RTR1-ES are for further study in Recommendation M.2101.1 [3]. The default values for RTR1-SES are given in Recommendations M.2100 [2] and M.2101.1 [3].

A threshold can be crossed at any second within the 15-minute rectangular fixed window. As soon as a threshold is crossed (subject to the requirements given in 2.3.4.4), a TR1-ES or TR1-SES as appropriate should be sent to the performance management centre together with a date/time-stamp. Moreover, performance events should continue to be counted to the end of the current 15-minute period, at which time the current ES and SES counts are stored in the historical registers and the current ES and SES registers are reset to zero.

If the optional threshold reset capability is used, then no more than one:

- TR1-ES should be generated per direction of transmission until there has been an RTR1-ES.
- TR1-SES should be generated per direction of transmission until there has been an RTR1-SES.

When the relevant above requirement is satisfied, the appropriate RTR1 (i.e. RTR1-ES or RTR1-SES respectively) should be sent to the performance management centre at the end of the 15-minute period. The generation of a RTR1 is only permitted subsequent to its respective TR1, and once generated re-enables the TR1 capability for the relevant parameter and direction of transmission.

2.3.4.3 Evaluation of TR2

The parameters ES and SES are counted separately over each 24-hour period. There are two TR2s: one for ES called TR2-ES and one for SES called TR2-SES. The threshold values should be programmable with default values.

The network element shall recognize a 24-hour threshold crossing within 15 minutes of its occurrence. The threshold crossing shall be given the date/time-stamp of the moment of recognition. A TR2-ES or TR2-SES as appropriate should be sent to the performance management centre with the date/time-stamp (subject to the requirements given in 2.3.4.4). Moreover, performance events should continue to be counted to the end of the current 24-hour period, at which time the ES and SES counts are stored in the historical registers and the current ES and SES registers are reset to zero.

No more than one TR2 should be generated per parameter and per direction of transmission during any 24-hour rectangular fixed window.

2.3.4.4 Threshold report evaluation during transmission state changes

Care should be taken to ensure that threshold reports are correctly generated and ES and SES counters are correctly processed during changes in the transmission state. This implies that all threshold reports should be delayed by 10 seconds (see Recommendations M.2100 [2] and M.2101.1 [3]).

Superseded by a more recent version

2.3.5 Performance history storage in network elements

Requirements for ME performance history storage are:

- Parameter counts to be stored are ES, SES;
- Where the unavailable second count and unavailable event count have been calculated by the network element, the network element must store these counts in addition to the ES and SES counts;
- There should be a current 15-minute register (which can also facilitate the TR1/RTR1 filter) plus a further N 15-minute history registers for each parameter in each ME. The N 15-minute history registers are used as a stack, i.e. the values held in each register are pushed down the stack one place at the end of each 15-minute period, and the oldest register values at the bottom of the stack are discarded. N is greater than or equal to 16 for SDH. (See Recommendation G.784.)
- There should be a current 24-hour register (which can also facilitate the TR2 filter) plus one previous 24-hour register for each parameter.

2.3.6 Performance history reporting from network elements

Performance data should be reportable to the performance management centre to suit various needs, for example:

- on demand, by request from the performance management centre;
- in a limited and targeted unsolicited format in the case of unavailability/availability transmission state change reports and, when in the available state, TR1/RTR1 or TR2 error performance reports;
- periodically, as part of a network-wide data accumulation task, by the network management centre(s). This may then be used for applications such as preventive maintenance (e.g. longer-term trend analysis) and "poor performer" analysis (see clause 6 and Recommendations M.2100 [2] and M.2101.1 [3] for further guidance).

2.3.7 Accuracy and resolution

2.3.7.1 Parameter counts

All parameter counts should be actual counts for the 15-minute filtering period.

Although all parameter counts should (ideally) also be actual for the 24-hour filtering periods, it is recognized that it might be desirable to limit register sizes. In such cases register overflow could occur. Should register overflow occur, the registers should hold at their maximum value for the parameter considered until the registers are read and reset at the end of the 24-hour period. An implementation involving setting and resetting an overflow bit may be used.

2.3.7.2 Date/time-stamping of reports

The date/time-stamping accuracy of reports, together with the method of maintaining the accuracy, is under study.

The format for date/time-stamps is as follows:

- 15-minute window will be stamped Day, Month, Year, Hour, Minute;
- 24-hour window will be stamped Day, Month, Year, Hour;
- Unavailable Time events will be stamped Day, Month, Year, Hour, Minute, Second;
- Alarms will be stamped either at the declaration of the alarm by the equipment or at the exact time of the event (to be decided) with Day, Month, Year, Hour, Minute, Second.

Superseded by a more recent version

Equipment clock accuracy requirements are for further study.

2.3.8 Single-ended monitoring capability

Situations are envisaged where it could be desirable to carry out error and availability performance processing of both directions of path transmission from a single end. Recommendations M.2100 [2] and M.2101.1 [3] detail standardized signal information which could be used to facilitate this requirement.

3 Fault localization procedures on PDH transmission systems and SDH multiplex sections

Fault localization largely depends on the fault localization means available to the ME. However, the guidelines in 3.1 and 3.2 can be used.

3.1 Fault localization in a pre-ISM environment

In a pre-ISM environment, a transmission system or multiplex section may not yield standardized parameters and may not have the capability to record performance history. In this situation the only opportunity is to monitor on a forward going basis, probably using proprietary test equipment.

Clearly, this strategy cannot guarantee identification of the source of the original performance problem, particularly if it is of a transient nature.

3.2 Fault localization in an ISM environment

When an unacceptable or degraded performance level is reached, the following should be done:

- immediately send a message to the control stations of the paths carried by the transmission system or the multiplex section;
- store the message for access by those control stations which do not receive the message directly. The storage will normally be at the fault report point;
- initiate the ME's fault localization capability to find the faulty maintenance sub-entity. This should be done in a time frame appropriate to the prompt or deferred maintenance alarm levels.

Recommendations M.2100 [2] and M.2101.1 [3] give the unacceptable and degraded performance level thresholds from the long-term perspective.

4 Fault localization procedures on PDH and SDH paths

The efficiency of the fault localization procedure is largely dependent on the type of information available at each bit rate (i.e. CRC information, parity bit, known frame word, etc.).

4.1 Fault localization in a pre-ISM environment or using OOS means

In a pre-ISM environment, the fault localization process will usually start after a user complaint.

In this situation, the only opportunity is to monitor after the event. This process cannot guarantee identification of the source of the original performance problem, particularly if it is of a transient nature.

Superseded by a more recent version

The control station responsible for the faulty path should:

- determine path routing;
- sectionalize the path. If traffic is not totally interrupted, in-service measuring instruments as described in Recommendations O.161 [8], O.162 [9] and O.163 [10] should be placed at various accessible points along the path to determine which part is faulty. These measurements are made at protected monitoring points (see Figure 2);
- coordinate the measurement process so that sub-control and participating centres start and finish their measurements at the same time;
- centralize results, either at the control station or at the fault report point, and compare to determine the faulty section;
- ensure that there are no monitoring "blind spots" on the path. A "blind spot" is a portion of the path which exists between two monitored portions. For example, cross-connect equipment may not be covered by the monitors of the transmission systems connected to the input and output. Unless such a cross-connect has its own monitoring system, it may be overlooked.

If several sections are faulty, fault localization will normally concentrate first on the most severely degraded section. Where additional maintenance effort is available, the total out-of-service time may be reduced by utilizing this additional effort on less degraded sections. However, control is needed so that the efforts of one technician (or group) do not mask a problem being worked on by another.

If traffic is totally interrupted, or ISM instruments are not available, the same fault localization procedure as before will be used, but with a pseudo-random bit sequence injected (if possible, framed sequence – using an instrument as described in Recommendations O.150 [6], O.151 [7] or O.181 [11]).

The points of injection and the monitoring locations should be chosen for efficiency of localization. This includes the possibility of loopback.

4.2 Fault localization in an ISM environment

4.2.1 The path control station is informed of problems by unacceptable or degraded performance level information (see Recommendations M.2100 [2] and M.2101.1 [3]), trend analysis, and/or by a user complaint.

The path control station should:

- undertake corrective action in a time-frame appropriate to the alarm level (prompt or deferred maintenance alarm or special instructions);
- confirm the unacceptable or degraded level of the path by consulting the history (BIS data, etc.) of the path.

4.2.2 Once the procedures of 3.2 are initiated, the control station of the ME concerned is expected to provide supplementary information to the TMN database.

The control stations of paths supported by the ME will be able to determine from the database such information as the expected return into service time, taking into consideration information on any other faulty MEs which affect the path.

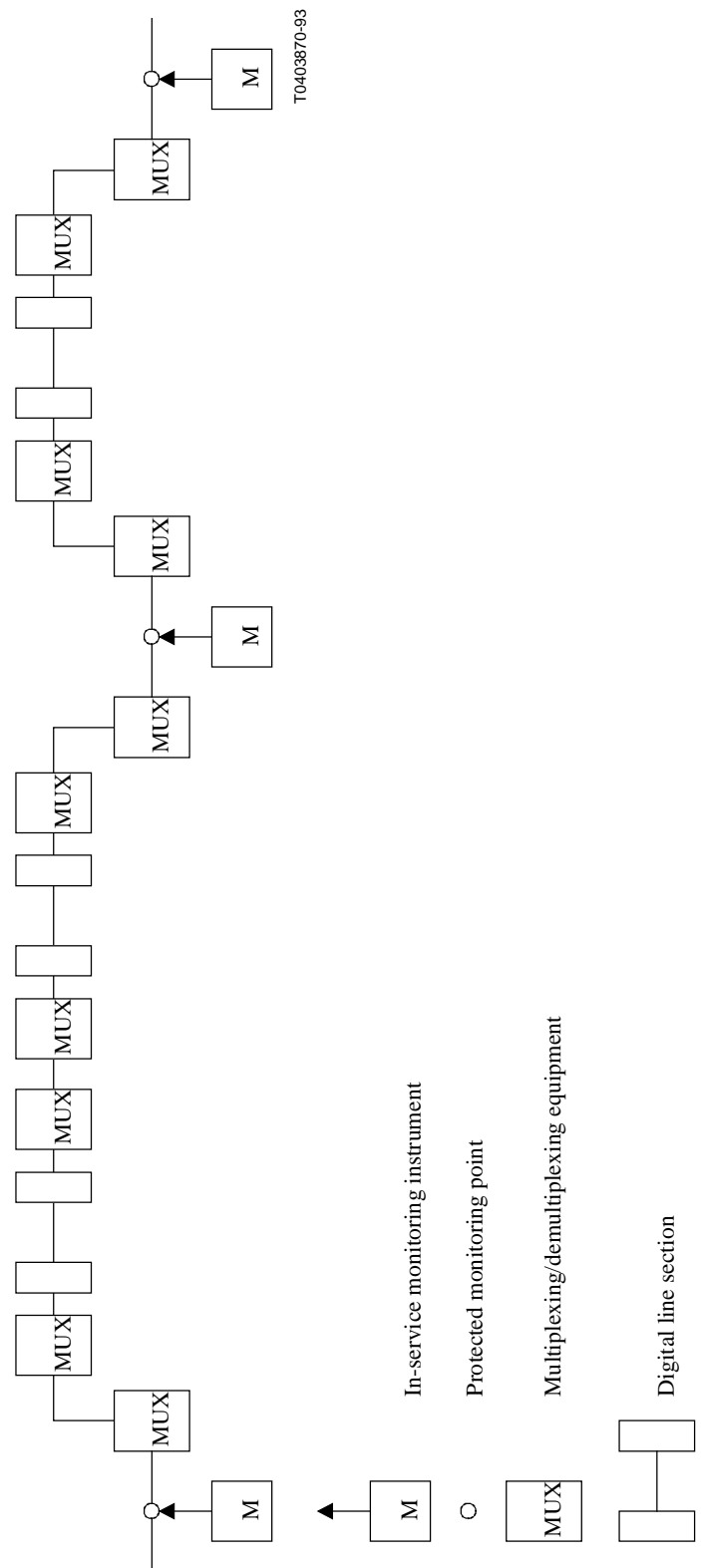


Figure 2/M.2120 – In-service measurement along a path in the pre-ISM environment

4.2.3 If the above procedure cannot be implemented, path routing should be determined and the higher level path control stations interrogated to determine the origin of the problem. This interrogation can be carried out directly or by consulting databases. The information exchanged must be expressed in terms of performance information as covered in Recommendations M.2100 [2] and M.2101.1 [3], with all events date/time-stamped, and the affected direction indicated. This procedure must lead to assigning the problem to the control station of the ME where degradation exists.

Superseded by a more recent version

5 Returning a maintenance entity into service

When the repair action on a faulty ME is completed, an appropriate assurance of satisfactory performance should be made.

Depending on the type and cause of the fault and the repair process, this assurance may be as simple as the ability to carry a signal, or may be more complex.

The performance limits for returning an ME into service (after intervention) are given in Recommendations M.2100 [2] and M.2101.1 [3].

In the extreme case it may be necessary to repeat the BIS tests as in Recommendation M.2110 [4].

When the path is returned to service, it should be monitored continuously for at least 7 days.

6 Trend analysis and signatures

In the interest of providing superior service to users, many Administrations use, or intend to use, a preventive approach to maintenance and fault localization. Preventive maintenance implies locating and correcting faults before a performance impairment reaches an unacceptable or degraded performance level.

One of the tools of preventive maintenance is trend analysis. Information is gathered from many points in the network, date/time-stamped and stored. Continuing automatic comparisons of measurements from a particular point may indicate by the trend of the measurements that there is a potential fault. The results of the trend analysis may generate the equivalent of a low level deferred maintenance alarm. Economics will determine at what point an Administration may decide to take action.

An indication which may be useful in trend or comparison analysis is error performance. A path or section which has poorer error performance than similar paths or sections, or which is showing a trend of increasing errors may become the target of reinforced maintenance.

Trend analysis of this type implies a well-developed TMN with wide deployment of ISM techniques.

A manual technique which may be useful for either preventive maintenance or fault localization is the analysis of signatures. A signature is a set of characteristics obtained by measurement, which can be interpreted to indicate the source of a fault or a potential fault.

As an example, experience on a path transported by TAT-8 has shown that a gradually increasing (over several days) number of ES in the absence of SES was indicative of a multiplexer fault which was not serious enough to generate an alarm. This signature may not appear on other systems.

As signatures may be equipment-dependent and configuration-dependent, and are often ambiguous, their development and use is a matter for consideration by local maintenance forces.

Superseded by a more recent version

ITU-T RECOMMENDATIONS SERIES

| | |
|-----------------|---|
| Series A | Organization of the work of the ITU-T |
| Series B | Means of expression: definitions, symbols, classification |
| Series C | General telecommunication statistics |
| Series D | General tariff principles |
| Series E | Overall network operation, telephone service, service operation and human factors |
| Series F | Non-telephone telecommunication services |
| Series G | Transmission systems and media, digital systems and networks |
| Series H | Audiovisual and multimedia systems |
| Series I | Integrated services digital network |
| Series J | Transmission of television, sound programme and other multimedia signals |
| Series K | Protection against interference |
| Series L | Construction, installation and protection of cables and other elements of outside plant |
| Series M | TMN and network maintenance: international transmission systems, telephone circuits, telegraphy, facsimile and leased circuits |
| Series N | Maintenance: international sound programme and television transmission circuits |
| Series O | Specifications of measuring equipment |
| Series P | Telephone transmission quality, telephone installations, local line networks |
| Series Q | Switching and signalling |
| Series R | Telegraph transmission |
| Series S | Telegraph services terminal equipment |
| Series T | Terminals for telematic services |
| Series U | Telegraph switching |
| Series V | Data communication over the telephone network |
| Series X | Data networks and open system communication |
| Series Z | Programming languages |